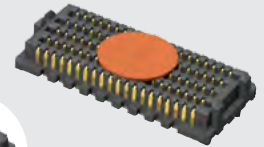


SEAM-30-03.5-S-04-2-A-K-TR



SEAM SERIES

(1.27 mm) .050"

# HIGH-SPEED/HIGH-DENSITY OPEN-PIN-FIELD

## SPECIFICATIONS

For complete specifications and recommended PCB layouts see [www.samtec.com?SEAM](http://www.samtec.com?SEAM)

- Insulator Material:** Black LCP
- Contact Material:** Copper Alloy
- Operating Temp Range:** -55 °C to +125 °C
- Current Rating (7 mm stack height):** 1.8 A per pin (10 adjacent pins powered)
- Plating:** Au or Sn over 50 μ" (1.27 μm) Ni
- Contact Resistance:** 5.5 mΩ
- Working Voltage:** 240 VAC
- RoHS Compliant:** Yes
- Lead-Free Solderable:** Yes

## RECOGNITIONS

For complete scope of recognitions see [www.samtec.com/quality](http://www.samtec.com/quality)



## STANDARDS

- PISMO 2
- VITA 47
- VITA 57.1

## PROTOCOLS

- 100 GbE
- Fibre Channel
- Rapid I/O
- PCI Express®
- SATA
- InfiniBand™

MATED HEIGHTS			
SEAM LEAD STYLE	SEAF LEAD STYLE		
	-05.0	-06.0	-06.5
-02.0	7 mm	8 mm	8.5 mm
-03.0	8 mm	9 mm	9.5 mm
-03.5	8.5 mm	9.5 mm	10 mm
-06.5	11.5 mm	12.5 mm	13 mm
-07.0	12 mm	13 mm	13.5 mm
-09.0	14 mm	15 mm	15.5 mm
-11.0	16 mm	17 mm	17.5 mm

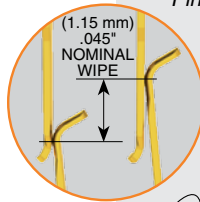
**Notes:** Patented

IPC-A-610F and IPC J-STD-001F Class 3 solder joint.

Some sizes, styles and options are non-standard, non-returnable.

**Mates with:** SEAF, SEAFP

**Standoffs:** JSO



Up to 500 Pins

5, 8 and 10 row footprint compatible with SamArray®. Samples recommended.

Solder charges

Low insertion/extraction forces

## HIGH-SPEED CHANNEL PERFORMANCE

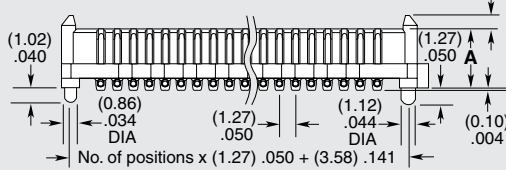
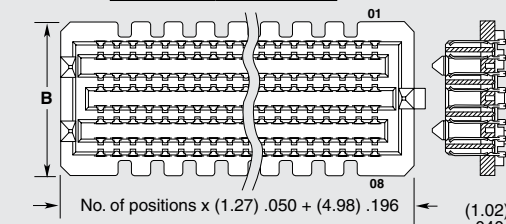
SEAM/SEAF @ 10 mm Mated Stack Height  
Rating based on Samtec reference channel. For full SI performance data visit [Samtec.com](http://Samtec.com) or contact [SIG@samtec.com](mailto:SIG@samtec.com)

**34**  
Gbps



SEAM	NO. PINS PER ROW	LEAD STYLE	PLATING OPTION	NO. OF ROWS	SOLDER TYPE	A	K	TR
	-10, -15, -20, -30, -40, -50 (-10 only available in 04 row) (-15 is only available in 4 Row with -02.0 lead style and 10 row with any lead style)	Specify LEAD STYLE from chart	-L = 10 μ" (0.25 μm) Gold on contact area, Matte Tin on solder tail -S = 30 μ" (0.76 μm) Gold on contact area, Matte Tin on solder tail	-04 = Four Rows (-06.5 not available) -05 = Five Rows (-06.5 not available) -06 = Six Rows (-06.5 not available) -08 = Eight Rows -10 = Ten Rows	-1 = Tin/Lead Alloy Solder Charge -2 = Lead-Free Solder Charge	-A = Alignment Pins (Required. Arrays will not self-center on solder pads) -K = Polyimide film Pick & Place Pad -TR = Tape & Reel		

NO. OF ROWS	B
-04	(7.06) .278
-05, -06	(9.60) .378
-08	(12.14) .478
-10	(14.68) .578



LEAD STYLE	A
-02.0	(4.60) .181
-03.0	(5.59) .220
-03.5	(6.10) .240
-06.5	(9.14) .360
-07.0	(9.60) .378
-09.0	(11.60) .457
-11.0	(13.60) .535

## DIFFERENTIAL

ARRAY	PAIR COUNT
40x8	80
40x6	60
30x10	75
30x8	60
30x6	45
50x10	125
50x8	100
40x10	100
20x10	50
20x8	40
20x5	25

## ALSO AVAILABLE (MOQ Required)

- Up to 560 pins
- Contact Samtec.

## X-ON Electronics

Largest Supplier of Electrical and Electronic Components

*Click to view similar products for [Board to Board & Mezzanine Connectors](#) category:*

*Click to view products by [Samtec](#) manufacturer:*

Other Similar products are found below :

[10135583-642402LF](#) [89885-310LF](#) [589158040000018](#) [6-1393048-0](#) [68683-613](#) [MDF7-12DP-2.54DSA](#) [MDF7-18P-2.54DSA\(01\)](#) [MDF7-20DP-2.54DSA](#) [MDF7-26D-2.54DSA\(55\)](#) [MDF7-3P-2.54DSA\(01\)](#) [MDF7B-3P-2.54DSA\(55\)](#) [MDF7C-11P-2.54DSA\(55\)](#) [MDF7C-18P-2.54DSA\(55\)](#) [MDF7C-5P-2.54DSA\(01\)](#) [MDF7P-5P-2.54DSA\(55\)](#) [75234-0516](#) [FCN-230C068-11](#) [FCN-268F012-G/BD](#) [FCN-268F036-G/BD](#) [FCN-268M012-G/0D](#) [FCN-268M024-G/1D](#) [FCN-360C008-C](#) [FCN-360C040-C](#) [FCN-723J004/1](#) [MIS-048-01-F-D-DP-K](#) [832-10-034-10-001000](#) [93696-325LF](#) [11828-1FA](#) [AXK630345P](#) [18097-0013](#) [ICA-328STT](#) [2007042-2](#) [304400-2](#) [FCN-214Q030-G/0](#) [FCN-215Q040-G/0](#) [FCN-230C068-ESA](#) [FCN-234P048-G/0](#) [FCN-235D050-G/C](#) [FCN-360A3](#) [FCN-360C040-B](#) [210-93-314-41-105000](#) [2-22603-0](#) [379-064-521-202](#) [MDF7-12P-2.54DSA\(01\)](#) [MDF7-16P-2.54DS\(56\)](#) [MDF7-40DP-2.54DSA\(55\)](#) [MDF7-8P-2.54DSA\(55\)](#) [MDF7B-16P-2.54DSA\(55\)](#) [AXG720047](#) [5031084030](#)