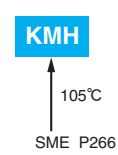


# KMH Series

- Endurance with ripple current : 2,000 hours at 105°C
- RoHS Compliant

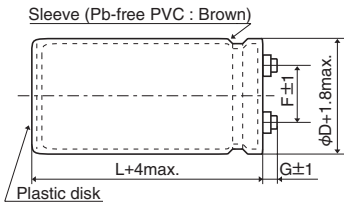


## SPECIFICATIONS

Items	Characteristics
Category	-40 to +105°C (10 to 100V <sub>dc</sub> ) -25 to +105°C (160 to 400V <sub>dc</sub> )
Temperature Range	
Rated Voltage Range	10 to 400V <sub>dc</sub>
Capacitance Tolerance	±20% (M) (at 20°C, 120Hz)
Leakage Current	I=0.02CV or 5mA, whichever is smaller. Where, I : Max. leakage current (μA), C : Nominal capacitance (μF), V : Rated voltage (V) (at 20°C after 5 minutes)
Dissipation Factor (tanδ)	Shall not exceed the values shown in the STANDARD RATINGS (at 20°C, 120Hz)
Low Temperature Characteristics	Capacitance change 10 to 100V <sub>dc</sub> : C(-40°C)/C(+20°C)≥0.6 160 to 400V <sub>dc</sub> : C(-25°C)/C(+20°C)≥0.7 (at 120Hz)
Insulation Resistance	When measured between the terminals that are connected to each other and to the mounting clamp on the insulating sleeve covering the case by using an insulation resistance meter of 500V <sub>dc</sub> , the insulation resistance shall not be less than 100MΩ.
Insulation Withstanding Voltage	When a voltage of 2,000Vac is applied for 1 minute between the terminals that are connected to each other and to the mounting clamp on the insulating sleeve covering the case, there shall not be electrical damage.
Endurance	The following specifications shall be satisfied when the capacitors are restored to 20°C after subjected to DC voltage with the rated ripple current is applied (the peak voltage shall not exceed the rated voltage) for 2,000 hours at 105°C.
	Capacitance change ≤±20% of the initial value
	D.F. (tanδ) ≤200% of the initial specified value
	Leakage current ≤The initial specified value
Shelf Life	The following specifications shall be satisfied when the capacitors are restored to 20°C after exposing them for 500 hours at 105°C without voltage applied. Before the measurement, the capacitor shall be preconditioned by applying voltage according to Item 4.1 of JIS C 5101-4.
	Capacitance change ≤±20% of the initial value
	D.F. (tanδ) ≤200% of the initial specified value
	Leakage current ≤The initial specified value

## DIMENSIONS (Screw-Mount) [mm]

Terminal Code : LG



φ35 to φ63.5 : G=6  
φ76.2 & φ89 : G=5

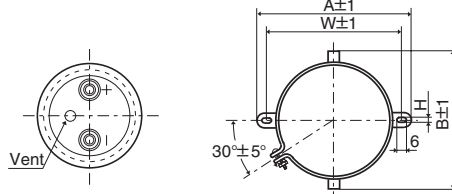
<Screw specifications>

Plus hexagon-headed screw : M5×0.8×10

Maximum screw tightening torque : 3.23Nm

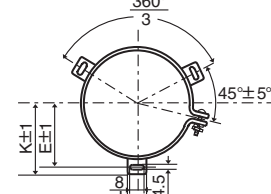
\* The screw and the mounting clamp are separately supplied and not attached to the product.

Mounting Clamp Code : B



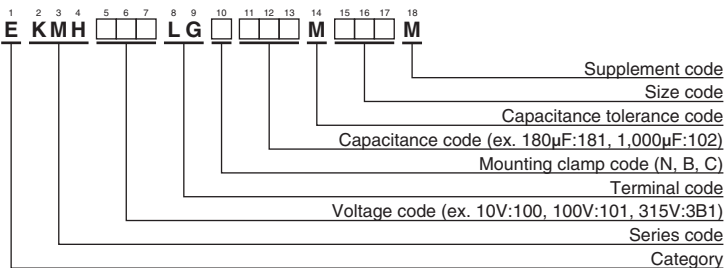
φD	A	B	W	H	F
35	58.0	44.0	48.0	3.5	12.7
50	78.0	64.0	68.0	4.5	22.4
63.5	90.0	76.0	80.0	4.5	28.0
76.2	104.5	90.0	93.5	4.5	31.5

Mounting Clamp Code : C



φD	E	K	J	F
50	32.5	37.0	14.0	22.4
63.5	38.1	43.5	14.0	28.0
76.2	44.5	50.0	14.0	31.5
89	50.8	56.5	16.0	31.5

## PART NUMBERING SYSTEM



Please refer to "Product code guide (screw-mount terminal type)"

**◆STANDARD RATINGS**

WV (Vdc)	Cap (μF)	Case size φD×L(mm)	tanδ	Rated ripple current (Arms/105°C,120Hz)	Part No.	WV (Vdc)	Cap (μF)	Case size φD×L(mm)	tanδ	Rated ripple current (Arms/105°C,120Hz)	Part No.	
10	27,000	35×50	0.45	4.90	EKMH100LGB273MA50M	35	56,000	50×100	0.40	11.4	EKMH350LGC563MCA0M	
	33,000	35×50	0.50	5.10	EKMH100LGB333MA50M		68,000	50×120	0.40	13.6	EKMH350LGC683MCC0M	
	39,000	35×60	0.50	5.90	EKMH100LGB393MA60M		82,000	63.5×100	0.45	14.8	EKMH350LGC823MDA0M	
	47,000	35×80	0.50	7.10	EKMH100LGB473MA80M		100,000	63.5×120	0.45	17.6	EKMH350LGC104MDC0M	
	56,000	35×80	0.60	7.10	EKMH100LGB563MA80M		120,000	63.5×120	0.55	17.6	EKMH350LGC124MDC0M	
	68,000	35×100	0.60	8.50	EKMH100LGB683MAA0M		150,000	76.2×120	0.65	19.8	EKMH350LGC154MEC0M	
	82,000	35×100	0.65	8.90	EKMH100LGB823MAA0M		180,000	76.2×120	0.80	19.8	EKMH350LGC184MEC0M	
	100,000	35×120	0.65	10.7	EKMH100LGB104MAC0M		220,000	76.2×140	0.80	23.4	EKMH350LGC224MEE0M	
	120,000	50×80	0.75	11.0	EKMH100LGC124MC80M		270,000	89×140	1.00	25.5	EKMH350LGC274MFE0M	
	150,000	50×100	0.80	13.2	EKMH100LGC154MCA0M		50	3,900	35×50	0.20	2.80	EKMH500LGB393MA50M
	180,000	50×120	0.80	15.7	EKMH100LGC184MCC0M			4,700	35×50	0.20	3.10	EKMH500LGB472MA50M
	220,000	50×120	0.85	16.8	EKMH100LGC224MCC0M			5,600	35×50	0.20	3.30	EKMH500LGB562MA50M
	270,000	63.5×120	1.00	19.6	EKMH100LGC274MDC0M			6,800	35×50	0.25	3.30	EKMH500LGB682MA50M
	330,000	63.5×120	1.20	19.7	EKMH100LGC334MDC0M			8,200	35×60	0.25	3.80	EKMH500LGB822MA60M
	390,000	76.2×120	1.50	21.3	EKMH100LGC394MEC0M			10,000	35×80	0.25	4.60	EKMH500LGB103MA80M
	470,000	76.2×120	1.80	21.4	EKMH100LGC474MEC0M			12,000	35×80	0.25	5.10	EKMH500LGB123MA80M
	560,000	76.2×140	2.00	23.6	EKMH100LGC564MEE0M			15,000	35×80	0.25	5.70	EKMH500LGB153MA80M
	680,000	89×140	2.40	26.0	EKMH100LGC684MFE0M			18,000	35×100	0.25	6.70	EKMH500LGB183MAA0M
16	18,000	35×50	0.40	4.20	EKMH160LGB183MA50M	22,000		35×120	0.25	8.10	EKMH500LGB223MAC0M	
	22,000	35×50	0.40	4.70	EKMH160LGB223MA50M	27,000		50×80	0.25	9.10	EKMH500LGC273MC80M	
	27,000	35×60	0.40	5.50	EKMH160LGB273MA60M	33,000		50×100	0.25	11.1	EKMH500LGC333MCA0M	
	33,000	35×60	0.45	5.70	EKMH160LGB333MA60M	39,000		50×120	0.25	13.1	EKMH500LGC393MCC0M	
	39,000	35×80	0.45	6.80	EKMH160LGB393MA80M	47,000		50×120	0.30	13.9	EKMH500LGC473MCC0M	
	47,000	35×80	0.50	7.10	EKMH160LGB473MA80M	56,000		63.5×100	0.35	13.9	EKMH500LGC563MDA0M	
	56,000	35×100	0.50	8.40	EKMH160LGB563MAA0M	68,000		63.5×120	0.35	16.6	EKMH500LGC683MDC0M	
	68,000	35×100	0.55	8.80	EKMH160LGB683MAA0M	82,000		76.2×120	0.40	18.9	EKMH500LGC823MEC0M	
	82,000	50×80	0.55	10.7	EKMH160LGC823MC80M	100,000		76.2×120	0.45	19.5	EKMH500LGC104MEC0M	
	100,000	50×80	0.65	10.8	EKMH160LGC104MC80M	120,000	76.2×120	0.55	19.5	EKMH500LGC124MEC0M		
	120,000	50×100	0.65	13.1	EKMH160LGC124MCA0M	150,000	89×140	0.60	23.9	EKMH500LGC154MFE0M		
	150,000	50×120	0.70	15.3	EKMH160LGC154MCC0M	180,000	89×140	0.75	23.9	EKMH500LGC184MFE0M		
	180,000	50×120	0.80	15.7	EKMH160LGC184MCC0M	63	2,700	35×50	0.20	2.30	EKMH630LGB272MA50M	
	220,000	63.5×120	0.85	19.2	EKMH160LGC224MDC0M		3,300	35×50	0.20	2.50	EKMH630LGB332MA50M	
	270,000	63.5×120	1.00	19.6	EKMH160LGC274MDC0M		3,900	35×50	0.20	2.80	EKMH630LGB392MA50M	
	330,000	76.2×120	1.30	21.1	EKMH160LGC334MEC0M		4,700	35×50	0.20	3.10	EKMH630LGB472MA50M	
	390,000	76.2×120	1.50	21.3	EKMH160LGC394MEC0M		5,600	35×60	0.20	3.50	EKMH630LGB562MA60M	
	470,000	76.2×140	1.60	24.2	EKMH160LGC474MEE0M		6,800	35×60	0.20	3.90	EKMH630LGB682MA60M	
560,000	89×140	2.00	28.1	EKMH160LGC564MFE0M	8,200		35×80	0.20	4.70	EKMH630LGB822MA80M		
680,000	89×140	2.40	28.5	EKMH160LGC684MFE0M	10,000		35×80	0.25	4.70	EKMH630LGB103MA80M		
25	12,000	35×50	0.35	3.70	EKMH250LGB123MA50M		12,000	35×100	0.25	5.50	EKMH630LGB123MAA0M	
	15,000	35×50	0.35	4.10	EKMH250LGB153MA50M		15,000	35×120	0.25	6.60	EKMH630LGB153MAC0M	
	18,000	35×60	0.35	4.80	EKMH250LGB183MA60M		18,000	50×80	0.25	7.40	EKMH630LGC183MC80M	
	22,000	35×60	0.35	5.30	EKMH250LGB223MA60M		22,000	50×100	0.25	9.00	EKMH630LGC223MCA0M	
	27,000	35×80	0.35	6.40	EKMH250LGB273MA80M		27,000	50×120	0.25	10.9	EKMH630LGC273MCC0M	
	33,000	35×80	0.40	6.70	EKMH250LGB333MA80M		33,000	50×120	0.25	12.0	EKMH630LGC333MCC0M	
	39,000	35×100	0.40	7.80	EKMH250LGB393MAA0M		39,000	63.5×100	0.30	12.5	EKMH630LGC393MDA0M	
	47,000	35×120	0.40	9.30	EKMH250LGB473MAC0M		47,000	63.5×120	0.30	14.9	EKMH630LGC473MDC0M	
	56,000	50×80	0.45	9.70	EKMH250LGC563MC80M		56,000	63.5×120	0.30	16.3	EKMH630LGB562MDC0M	
	68,000	50×100	0.45	11.2	EKMH250LGC683MCA0M		68,000	76.2×120	0.35	18.4	EKMH630LGC683MEC0M	
	82,000	50×100	0.50	11.2	EKMH250LGC823MCA0M	82,000	76.2×140	0.40	20.0	EKMH630LGC823MEE0M		
	100,000	50×120	0.50	14.8	EKMH250LGC104MCC0M	100,000	76.2×140	0.50	20.0	EKMH630LGC104MEE0M		
	120,000	63.5×100	0.65	14.9	EKMH250LGC124MDA0M	120,000	89×140	0.60	21.8	EKMH630LGC124MFE0M		
	150,000	63.5×120	0.65	17.9	EKMH250LGC154MDC0M	80	2,200	35×50	0.15	2.40	EKMH800LGB222MA50M	
	180,000	63.5×120	0.80	17.9	EKMH250LGC184MDC0M		2,700	35×50	0.15	2.70	EKMH800LGB272MA50M	
	220,000	76.2×120	0.85	21.3	EKMH250LGC224MEC0M		3,300	35×50	0.15	3.00	EKMH800LGB332MA50M	
	270,000	76.2×120	1.00	21.7	EKMH250LGC274MEC0M		3,900	35×60	0.15	3.40	EKMH800LGB392MA60M	
	330,000	76.2×140	1.20	23.4	EKMH250LGC334MEE0M		4,700	35×60	0.15	3.70	EKMH800LGB472MA60M	
390,000	89×140	1.50	24.9	EKMH250LGC394MFE0M	5,600		35×80	0.15	4.50	EKMH800LGB562MA80M		
35	8,200	35×50	0.30	3.30	EKMH350LGB822MA50M		6,800	35×80	0.15	4.90	EKMH800LGB682MA80M	
	10,000	35×50	0.30	3.60	EKMH350LGB103MA50M		8,200	35×100	0.20	5.10	EKMH800LGB822MAA0M	
	12,000	35×60	0.30	4.20	EKMH350LGB123MA60M		10,000	35×120	0.20	6.10	EKMH800LGB103MAC0M	
	15,000	35×60	0.30	4.70	EKMH350LGB153MA60M		12,000	50×80	0.20	6.70	EKMH800LGC123MC80M	
	18,000	35×80	0.30	5.70	EKMH350LGB183MA80M		15,000	50×100	0.20	8.30	EKMH800LGC153MCA0M	
	22,000	35×80	0.30	6.30	EKMH350LGB223MA80M		18,000	50×120	0.20	9.90	EKMH800LGC183MCC0M	
	27,000	35×100	0.30	7.50	EKMH350LGB273MAA0M		22,000	50×120	0.20	11.0	EKMH800LGC223MCC0M	
	33,000	35×120	0.30	9.00	EKMH350LGB333MAC0M		27,000	63.5×100	0.25	11.4	EKMH800LGC273MDA0M	
	39,000	50×80	0.35	9.20	EKMH350LGC393MC80M		33,000	76.2×100	0.25	13.9	EKMH800LGC333MEA0M	
	47,000	50×100	0.35	11.2	EKMH350LGC473MCA0M		39,000	76.2×100	0.30	13.9	EKMH800LGC393MEA0M	



◆STANDARD RATINGS

WV (V <sub>dc</sub> )	Cap (μF)	Case size φD×L(mm)	tanδ	Rated ripple current (Arms/105°C,120Hz)	Part No.	WV (V <sub>dc</sub> )	Cap (μF)	Case size φD×L(mm)	tanδ	Rated ripple current (Arms/105°C,120Hz)	Part No.
400	560	35×80	0.15	1.40	EKMH401LGB561MA80M	400	2,200	63.5×100	0.15	4.20	EKMH401LGC222MDA0M
	680	35×100	0.15	1.70	EKMH401LGB681MAA0M		3,300	63.5×120	0.15	5.50	EKMH401LGC332MDC0M
	820	35×120	0.15	2.00	EKMH401LGB821MAC0M		4,700	76.2×130	0.15	7.60	EKMH401LGC472MED0M
	1,000	50×80	0.15	2.20	EKMH401LGC102MC80M		5,600	89×140	0.15	9.40	EKMH401LGC562MFE0M
	1,200	50×100	0.15	2.70	EKMH401LGC122MCA0M		6,800	89×140	0.15	10.4	EKMH401LGC682MFE0M
	1,500	50×120	0.15	3.30	EKMH401LGC152MCC0M						

◆RATED RIPPLE CURRENT MULTIPLIERS

●Frequency Multipliers

Rated voltage (V <sub>dc</sub> )	Case diameter (mm)	Frequency (Hz)					
		50	120	300	1k	10k	50k
10 to 50	φ35 to φ89	0.95	1.00	1.03	1.05	1.09	1.12
63 & 80	φ35	0.90	1.00	1.06	1.10	1.18	1.22
	φ50 to φ89	0.95	1.00	1.03	1.05	1.09	1.12
100	φ35	0.82	1.00	1.12	1.22	1.30	1.33
	φ50	0.90	1.00	1.06	1.10	1.18	1.22
	φ63.5 to φ89	0.95	1.00	1.03	1.05	1.09	1.12
160 to 250	φ35	0.80	1.00	1.19	1.34	1.46	1.52
	φ50 & φ63.5	0.81	1.00	1.14	1.26	1.36	1.41
	φ76.2 & φ89	0.82	1.00	1.12	1.22	1.30	1.33
315 to 400	φ35 to φ89	0.80	1.00	1.19	1.34	1.46	1.52

The endurance of capacitors is reduced with internal heating produced by ripple current at the rate of halving the lifetime with every 5°C rise. When long life performance is required in actual use, the rms ripple current has to be reduced.

## X-ON Electronics

Largest Supplier of Electrical and Electronic Components

*Click to view similar products for [Aluminum Electrolytic Capacitors - Screw Terminal](#) category:*

*Click to view products by [United Chemicon](#) manufacturer:*

Other Similar products are found below :

[M39018/04-2181M](#) [M39018/06-0125M](#) [M39018/06-0158M](#) [E32D161HPN223MEB7M](#) [E32D161HPN273MED0M](#) [E32D401LPN851TDE3M](#)  
[E32D500HPN333MAB7M](#) [E32D500LPN303TDA5M](#) [E32D630HPN153MA92M](#) [ERWF401LGC472MDF5M](#) [ESME800LGC223MCA0M](#)  
[FAS220250AA](#) [M39018/04-2146M](#) [36DA222F450CC2A](#) [32D502F075CD2B](#) [36D552G040AC2A](#) [36DA103F035AA2A](#)  
[36DA123F100BC2A](#) [36DA223F025BA2A](#) [36DA563F050BF2A](#) [E32D600HPN753UEE3M](#) [E32D750HPN202TA67M](#)  
[E32D800HPC223MD79M](#) [E32D800HPN124MEM9M](#) [36DA152F400BC2AEA](#) [E32D101HLS123MC92M](#) [E32D800HLN682MA79M](#)  
[E74D400LPN302UA54M](#) [E32D501CSS422MFE5M](#) [36DX931F450CC2A](#) [E32D451LPN901TEE3M](#) [ERWF451LGN103MFH0M](#)  
[E32D350HPN224ME92M](#) [ERWF451LGB821MC60M](#) [B43586S0478Q5](#) [36DA683F025BL2A](#) [M39018/06-0139M](#) [E74D400HPN173TCE3M](#)  
[HV101761T250BA2A](#) [ALS36H222L5L350](#) [550322T450DF2BP](#) [550C201T400AA1A](#) [E32D161CPN473MEM9M](#)  
[ERHA601LGC562MFH0U](#) [E32D401MLN181MA41M](#) [E32D401HLN152QDA5M](#) [MAL210213222E3](#) [520C562P400DF2H](#)  
[3186GJ503M125DPA2](#) [3188GN282S400KPA2](#)