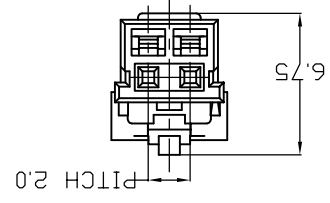
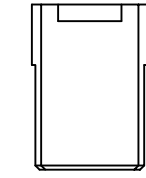
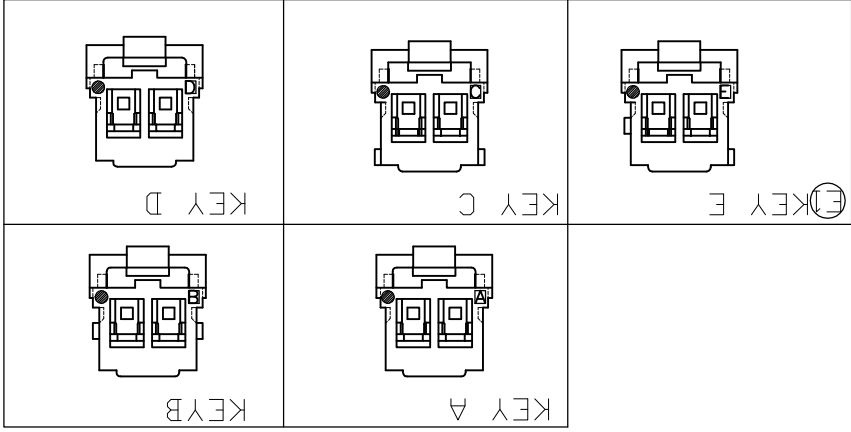
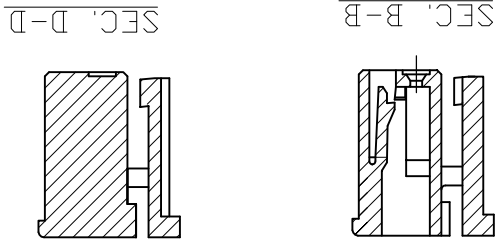
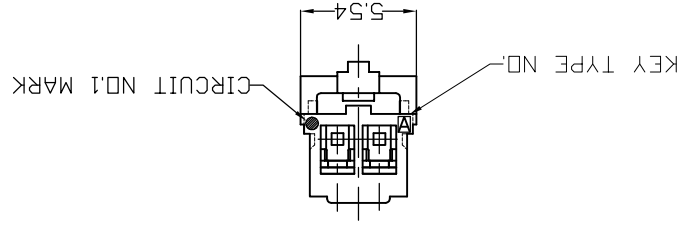
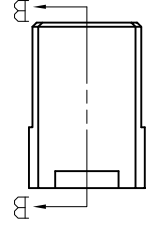
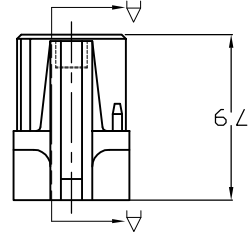
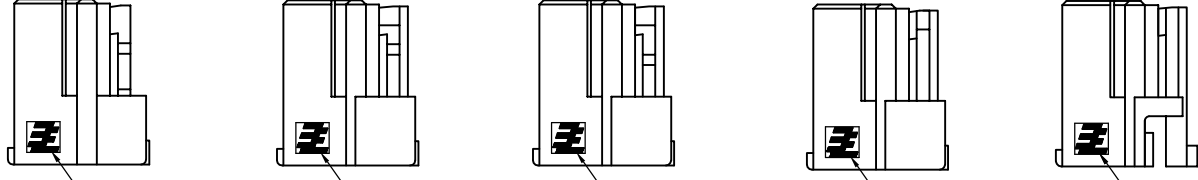


CUSTOMER DRAWING		SCALE 4:1		SHEET 1 of 3		REV E1	
RESTRICTED TO		DRAWING NO. 1971030		CAGE CODE 00779		SIZE A2	
Grace Inertia Connector 2.0 EV Series Plug Housing		APPLICATION SPEC 108-106001		WEIGHT 0		FINISH	
TE Connectivity		Zhou Jiliang		114-5425		TOLERANCES UNLESS OTHERWISE SPECIFIED	
11JUN2008		11JUN2008		11JUN2008		DIMENSIONS: mm	
CHK Liu Jimmy		APVD Wu happye		PRODUCT SPEC		0 PLC	
11JUN2008		11JUN2008		11JUN2008		1 PLC	
						2 PLC	
						3 PLC	
						4 PLC	
						SEE NOTE	
						MATERIAL	



(2 POS.) (3~4 POS.) (5 POS.) (6~8 POS.) (9~10 POS.)



(2 POS.)

- NOTE:
1. GENERAL TOLERANCE: ± 0.3 , $\pm 3^\circ$
 2. MATERIAL: 66NYLON GF(UL94V-0)
 3. MATING CONN. P/N: SEE TABLE
 4. APPLICABLE CONTACT P/N: 1971031-1

REVISIONS	DATE	APVD	P	LTR	DESCRIPTION
1	08SEP2017	M.G.D.Z	E1		EGR-17-013211

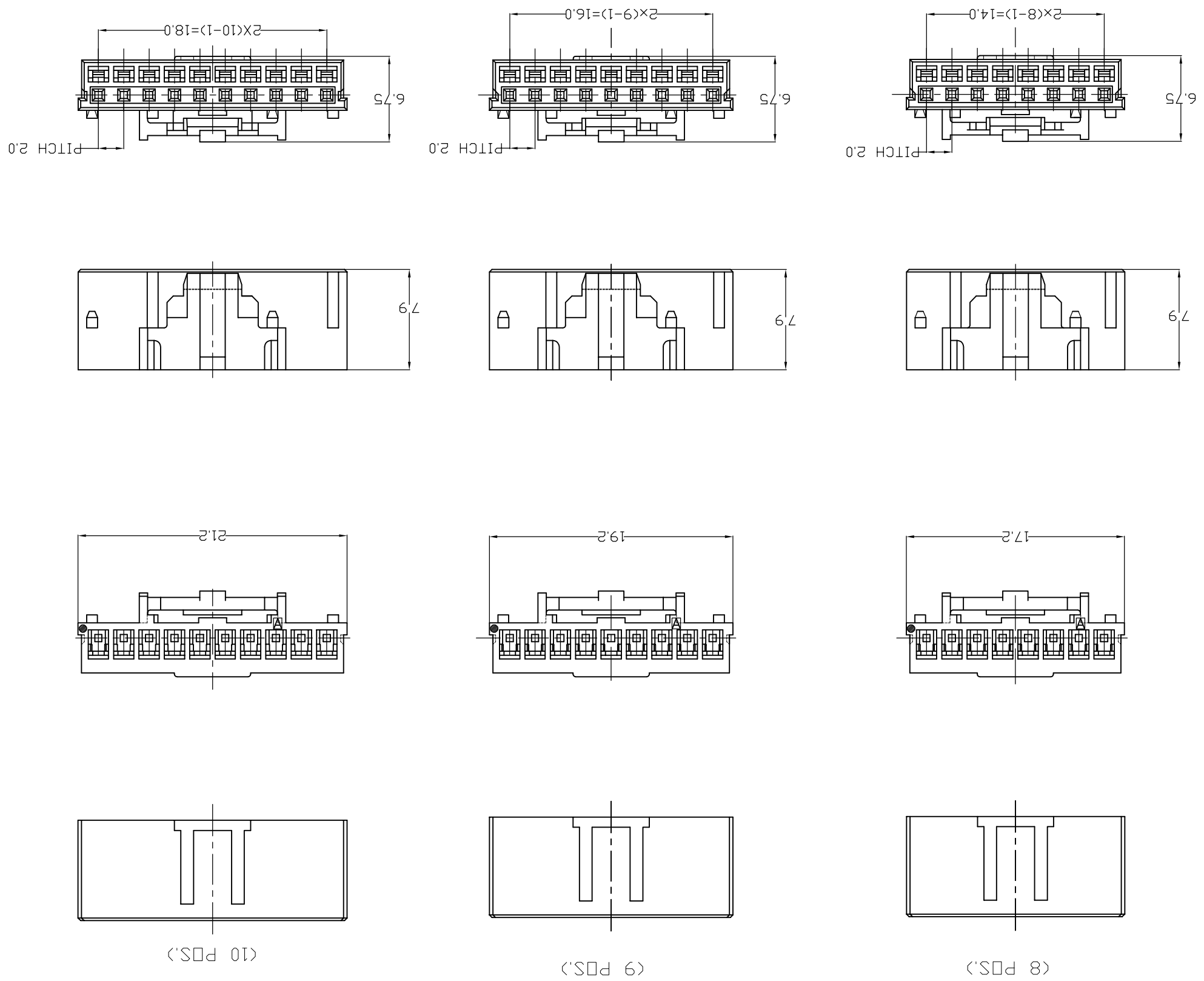
THIS DRAWING IS A CONTROLLED DOCUMENT.
 DWG: 11JUN2008
 CHK: Liu Jimmy
 11JUN2008
 WU Sam
 11JUN2008
 APVD: Zhou Jiliang
 PRODUCT SPEC: 108-106001
 APPLICATION SPEC: 114-5425
 WEIGHT: -
 MATERIAL: SEE NOTE
 FINISH: 0 PLC
 1 PLC
 2 PLC
 3 PLC
 4 PLC
 ANGLES: ±
 DIMENSIONS: mm
 TOLERANCES UNLESS OTHERWISE SPECIFIED

CUSTOMER DRAWING
 SCALE: 4:1
 SHEET: 3 of 3
 REV: E1
 RESTRICTED TO: -
 CAGE CODE: 00779
 DRAWING NO: 1971030

Grace Inertia Connector 2.0 EV Series
 Plug Housing

TE Connectivity

PART NUMBER	KEY TYPE	COLOR	POS	MATING CONNECTOR
1971032-2	A	NATURAL	2	1971032-2
1-1971032-2	B	RED		1-1971032-2
2-1971032-2	C	BLUE		2-1971032-2
3-1971032-2	D	YELLOW		3-1971032-2
4-1971032-2	E	BLACK		4-1971032-2
1971032-3	A	NATURAL	3	1971032-3
1-1971032-3	B	RED		1-1971032-3
2-1971032-3	C	BLUE		2-1971032-3
3-1971032-3	D	YELLOW		3-1971032-3
1971032-4	A	NATURAL	4	1971032-4
1-1971032-4	B	RED		1-1971032-4
2-1971032-4	C	BLUE		2-1971032-4
3-1971032-4	D	YELLOW		3-1971032-4
1971032-5	A	NATURAL	5	1971032-5
1-1971032-5	B	RED		1-1971032-5
2-1971032-5	C	BLUE		2-1971032-5
3-1971032-5	D	YELLOW		3-1971032-5
4-1971032-5	E	BLACK		4-1971032-5
1971032-6	A	NATURAL	6	1971032-6
1-1971032-6	B	RED		1-1971032-6
2-1971032-6	C	BLUE		2-1971032-6
3-1971032-6	D	YELLOW		3-1971032-6
3-1971032-6	D	YELLOW		3-1971032-6
1971032-7	A	NATURAL	7	1971032-7
1-1971032-7	B	RED		1-1971032-7
2-1971032-7	C	BLUE		2-1971032-7
3-1971032-7	D	YELLOW		3-1971032-7
1971032-8	A	NATURAL	8	1971032-8
1-1971032-8	B	RED		1-1971032-8
2-1971032-8	C	BLUE		2-1971032-8
3-1971032-8	D	YELLOW		3-1971032-8
1971032-9	A	NATURAL	9	1971032-9
1-1971032-9	B	RED		1-1971032-9
2-1971032-9	C	BLUE		2-1971032-9
3-1971032-9	D	YELLOW		3-1971032-9
1971032-1	A	NATURAL	10	1971032-1
1-1971032-1	B	RED		1-1971032-1
2-1971032-1	C	BLUE		2-1971032-1
3-1971032-1	D	YELLOW		3-1971032-1



REV	DATE	DESCRIPTION	APVD
-	-	SEE SHEET 1	-

THIS DRAWING IS UNPUBLISHED. RELEASED FOR PUBLICATION. ALL RIGHTS RESERVED.
 COPYRIGHT - TE Connectivity

X-ON Electronics

Largest Supplier of Electrical and Electronic Components

Click to view similar products for [Headers & Wire Housings](#) category:

Click to view products by [TE Connectivity](#) manufacturer:

Other Similar products are found below :

[95000-104TRLF](#) [10135584-644402LF](#) [DF62W-EP2022PCA](#) [95000-106TRLF](#) [DF62W-2022SCA](#) [DF62W-EP2022PC](#) [2203348](#) [DF62W-2022SC](#) [1084018](#) [1029039](#) [1084017](#) [802-10-012-10-002000](#) [1112640](#) [1112639](#) [000-34000](#) [0009482033](#) [0009507031](#) [57102-S06-03LF](#) [57202-S52-04LF](#) [PCN6-15S-2.5E](#) [0039019024](#) [58102-G61-06LF](#) [582553-1](#) [0009485154](#) [0009508121](#) [0022285053](#) [0050291907](#) [018731A](#) [LY20-4P-DT1-P1E-BR](#) [02.125.8002.8](#) [60101931](#) [60598-1 \(Cut Strip\)](#) [M1625-3R/100](#) [61062-3](#) [61082-181009](#) [636-1427](#) [638009-1](#) [641938-9](#) [641991-4](#) [644168-1](#) [647662-1](#) [65039-019ELF](#) [65817-002LF](#) [65817-015LF](#) [65863-015LF](#) [66207-023LF](#) [67016-026LF](#) [67046-001LF](#) [67095-007LF](#) [67230-005LF](#)