

Introducing High Temperature FASTON Housings

TE Connectivity (TE) FASTON terminals and connectors have been the industry leader in the appliance and automotive industries for years. TE continues to reinvent the FASTON product line to meet the changing trends in these industries. We have seen the need for housings with higher temperature ratings as well as for flag housings that fully enclose the terminal, so TE is proud to introduce several new products specifically designed to meet these applications. These new products come with the same strong engineering support and high quality that TE has provided for over 50 years.

High Temperature Housings for Straight FASTON Terminals

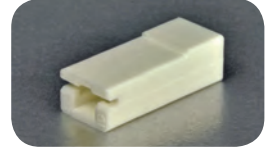
1969632-1 .250 High Temperature FASTON Housing

- 200°C LCP material, black color
- Can be used with low insertion force nickel steel terminal 1742198-1 (.250 x .032 [6.35 x 0.81])



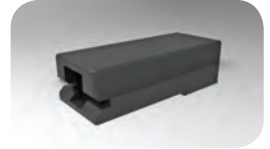
2-480435-2 .187 High Temperature FASTON Housing

- V-0 150°C Nylon material, white color
- Can be used with low insertion force nickel steel terminals 1742841-1 (.187 x .020 [4.75 x 0.51]) or 1742883-1 (.187 x .032 [4.75x0.81])



2-480435-3 .187 High Temperature FASTON Housing

- 200°C LCP material, black color
- Can be used with low insertion force nickel steel terminals 1742841-1 (.187 x .020 [4.75 x 0.51]) or 1742883-1 (.187 x .032 [4.75x0.81])



High Temperature, Fully Enclosed, Flag FASTON Housings

1969507-2 .250 FASTON Flag Housing

- V-0 150°C Nylon material, white color
- Prevents the tab from mating between the back of the terminal and the plastic
- With latch cover closed, provides an ergonomic flat surface to aid with insertion
- Can be used with all .250 x .032 [6.35 x 0.81] Tab-Lok flag terminals, low insertion force nickel steel terminal (1742543-1), Hermetic terminals and F-crimp terminal 1742999-1
- Designed for broad range of wire gauges and 2 wire applications



1969656-1 .250 FASTON Flag Housing, Left Hand

- V-0 150°C Nylon material, white color
- Can be used with F-crimp flag terminal 63009-1 (.250 x 0.32 [6.35 x 0.81])
- Designed for use with top entry, tab mated relay applications



1969657-1 .250 FASTON Flag Housing, Right Hand

- V-0 150°C Nylon material, black color
- Can be used with F-crimp flag terminal 63010-1 (.250 x .032 [6.35 x 0.81])
- Designed for use with top entry, tab mated relay applications



TE Technical Support Center

USA:	+1 (800) 522-6752
Canada:	+1 (905) 475-6222
Mexico:	+52 (0) 55-1106-0800
Latin/S. America:	+54 (0) 11-4733-2200
Germany:	+49 (0) 6251-133-1999
UK:	+44 (0) 800-267666
France:	+33 (0) 1-3420-8686
Netherlands:	+31 (0) 73-6246-999
China:	+86 (0) 400-820-6015

te.com/products/faston

© 2014 TE Connectivity Ltd. family of companies. All Rights Reserved.

1-1773728-5 APP RRD 1.5M 04/2014

TE Connectivity, TE connectivity (logo), TE, FASTON and Tab-Lok are trademarks. Other logos, product and/or company names might be trademarks of their respective owners.



While TE has made every reasonable effort to ensure the accuracy of the information in this brochure, TE does not guarantee that it is error-free, nor does TE make any other representation, warranty or guarantee that the information is accurate, correct, reliable or current. TE reserves the right to make any adjustments to the information contained herein at any time without notice. TE expressly disclaims all implied warranties regarding the information contained herein, including, but not limited to, any implied warranties of merchantability or fitness for a particular purpose. The dimensions in this catalog are for reference purposes only and are subject to change without notice. Specifications are subject to change without notice. Consult TE for the latest dimensions and design specifications.

X-ON Electronics

Largest Supplier of Electrical and Electronic Components

Click to view similar products for [Terminals](#) category:

Click to view products by [TE Connectivity](#) manufacturer:

Other Similar products are found below :

[HT-13-10](#) [71M-250-32-NB](#) [01-2065-1-0216](#) [00581P0075](#) [M10-10RX](#) [M10BCK](#) [60205-1](#) [604200-1](#) [60598-1-CUT-TAPE](#) [60617-1-C](#) [60873-1](#) [M14-516R/SK](#) [M14-6RSX](#) [M18-10FLX](#) [M18-8FBX](#) [M18-8R/LX](#) [M18BCK](#) [61314-6-C](#) [61-S](#) [61-SN-A](#) [62-NBM-A](#) [63-S](#) [640179-1](#) [640917-2-CUT-TAPE](#) [6501550002](#) [66107-2-C](#) [696683-1](#) [696834-1](#) [696861-1](#) [696931-1](#) [696999-1](#) [M8-516RK](#) [M86700006](#) [MA250DMFMX-A](#) [701-2007](#) [701-2307](#) [701-7761-03](#) [70F-110-32-PB](#) [718-N-A](#) [71M-187-20-NBL](#) [71M-250-32-NBL](#) [72F-187-20-NBL](#) [72M-250-32-NBL](#) [7310](#) [73F-250-32](#) [73F-250-32-NBL](#) [73F-250-32-NL](#) [F14-10C](#) [F-1M](#) [751-250](#)