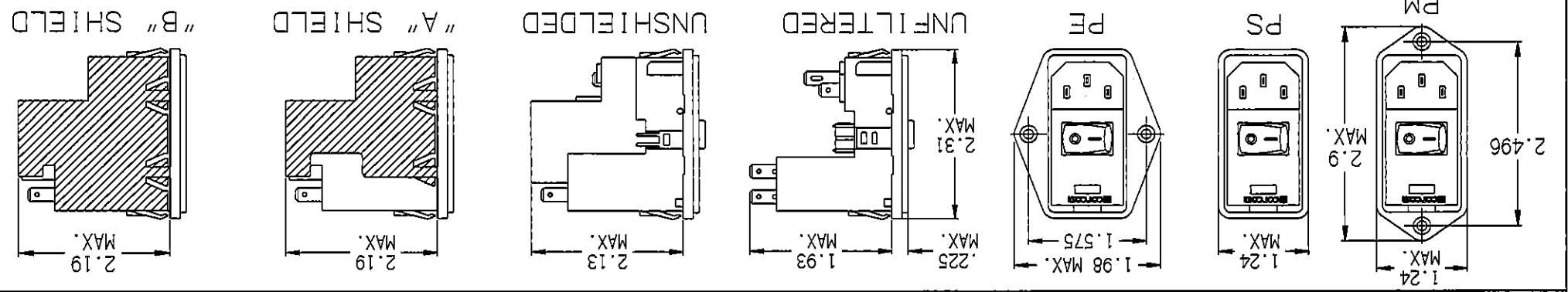
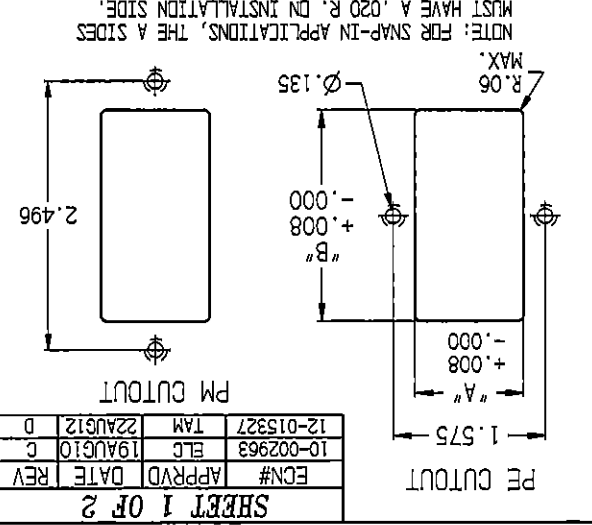
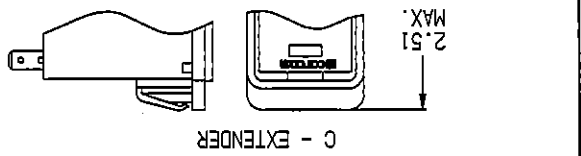


MINIMUM INSERTION LOSS IN DB
LINE TO GROUND IN 50 OHM CIRCUIT

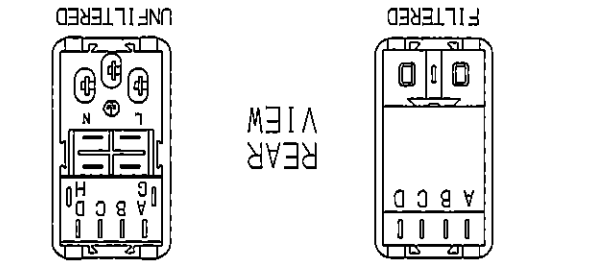
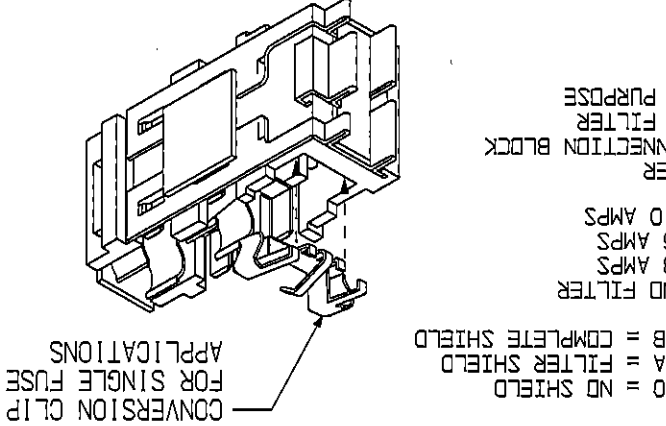
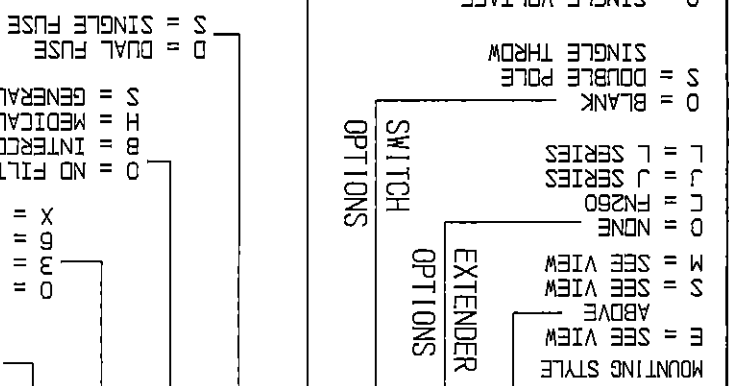
MINIMUM INSERTION LOSS IN DB
LINE TO LINE IN 50 OHM CIRCUIT

RECOMMENDED PANEL CUTOUTS

CURRENT	FREQUENCY MHZ			CURRENT	FREQUENCY MHZ			STYLE	DIMENSION 'A'		DIMENSION B
	0.15	0.5	1		3	5	10		30	UNSHIELDED	
3 AMP	21	27	30	29	26	23	15	PSL	1.12	1.12	2.201 *
6 AMP	11	15	17	19	18	16	13	PE	1.12	1.12	2.201 *
10 AMP	5	8	10	12	11	11	10	PM	1.06	1.12	2.13
3 AMP	21	27	33	40	44	50	32	PS	1.06	1.12	2.201 *
6 AMP	12	17	23	32	36	44	30	PSC	1.06	1.12	2.52
10 AMP	5	10	13	23	27	35	27	PSJ	1.06	1.12	2.6
* FOR PANEL THICKNESS OF 0.031" - 0.079" ONLY. USE 2.213 FOR PANEL THICKNESS OF 0.083" - 0.114"											



- P = MOUNTING STYLE
- S = SEE VIEW ABOVE
- E = SEE VIEW ABOVE
- S = SEE VIEW ABOVE
- M = SEE VIEW ABOVE
- O = NONE
- L = FN260
- L = J SERIES
- L = L SERIES
- O = BLANK
- S = DOUBLE POLE
- S = SINGLE THROW
- O = SINGLE VOLTAGE
- S = DUAL VOLT. SELECT (SMP)
- X = DUAL VOLT. SELECT (SERIES/PARALLEL)

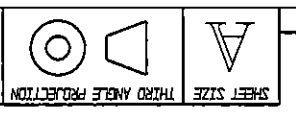


Tyco Electronics
 CUSTOMER DRAWING
 CONCOM PRODUCTS, 620 S. BUTTERFIELD RD., WUNDELEIN IL 60060

TYCO ELECTRONICS PART NO. P-SERIES

SCALE: 1:2
 DATE: 2-4-97
 ORG: P-SERIES
 REV: D

DRM. BY: [REDACTED]
 THIS INFORMATION IS CONFIDENTIAL AND PROPRIETARY TO TYCO ELECTRONICS CORPORATION AND ITS WORLDWIDE SUBSIDIARIES AND AFFILIATES. IT MAY NOT BE DISCLOSED TO ANYONE OTHER THAN TYCO ELECTRONICS PERSONNEL, WITHOUT WRITTEN AUTHORIZATION FROM TYCO ELECTRONICS CORPORATION.
 HARRISBURG, PENNSYLVANIA USA.





THIS INFORMATION IS CONFIDENTIAL AND PROPRIETARY TO TYCO ELECTRONICS CORPORATION AND ITS WORLDWIDE SUBSIDIARIES AND AFFILIATES. IT MAY NOT BE DISCLOSED TO ANYONE OTHER THAN TYCO ELECTRONICS PERSONNEL, WITHOUT WRITTEN AUTHORIZATION FROM TYCO ELECTRONICS CORPORATION, HARRISBURG, PENNSYLVANIA USA.

SCALE: NA
DATE: 2/4/97
DRG: REV: D

P-SERIES
DRAWING NUMBER:

REV: D

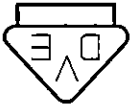
TYCO ELECTRONICS PART NO.

CUSTOMER DRAWING
P-SERIES

CORCOM PRODUCTS, 620 S. BUTTERNUT RD., MUNDLEIN, IL 60060



UL RECOGNIZED
CSA CERTIFIED
VDE APPROVED

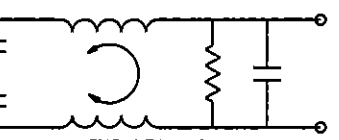


THIS FILTER HAS BEEN FORMALLY RECOGNIZED, CERTIFIED OR APPROVED BY THE LISTED AGENCY. THEREFORE, ALL TEST/REQUIREMENTS SPECIFIED IN THE LATEST REVISION OF THE FOLLOWING AGENCY STANDARDS HAVE BEEN MET:

SAFETY ORGANIZATIONS

TERMINALS: FOUR 0.187" x 0.032" QUICK CONNECT TABS
ONE SOLDER TERMINAL

GENERAL NOTES:
CONVERSION CLIP PROVIDED ON FUSEHOLDER FOR SINGLE FUSE MODELS.
SWITCH: DOUBLE INSULATED RATED FOR 10,000 OPERATIONS AT FULL LOAD.
51 AMP INRUSH CAPABILITY.
51 AMP INRUSH CAPABILITY.



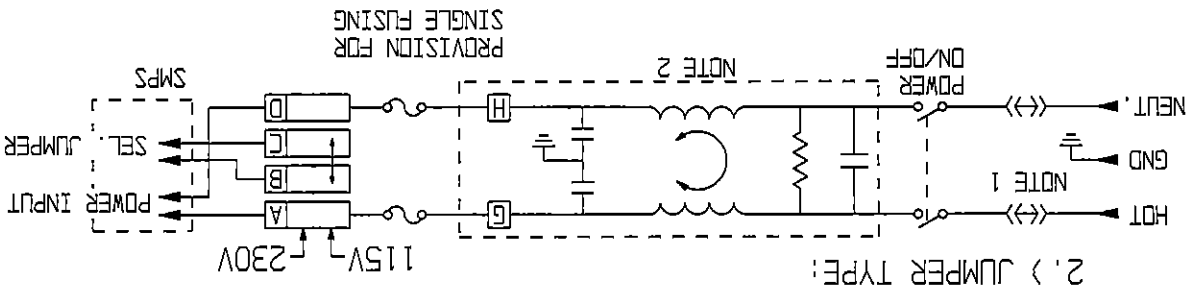
S MODEL



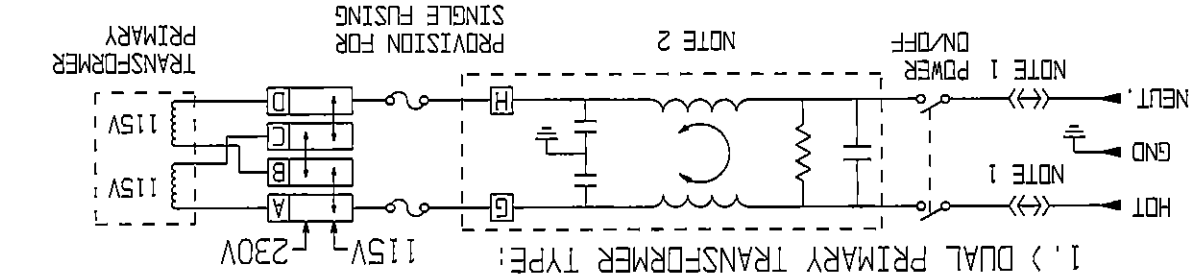
H MODEL

SEE INDIVIDUAL CUSTOMER DRAWINGS FOR OTHER (L AND Z) P-SERIES VERSIONS.

NOTE 1: JUMPERS ARE REQUIRED IF A FILTER OR INTERCONNECTION MODULE IS NOT USED.
NOTE 2: LOCATION OF OPTIONAL FILTER, JUMPERS ARE REQUIRED IF A FILTER OR INTERCONNECTION MODULE IS NOT USED.



1.) DUAL PRIMARY TRANSFORMER TYPE:



RATED CURRENT, I_R:

10A @ 120 VAC
10A @ 250 VAC

NONFILTERED MODELS

MAXIMUM LEAKAGE CURRENT, EACH LINE TO GROUND:
H MODELS 27A @ 120 VAC 60HZ;
S MODELS 0.25M @ 120 VAC 60HZ;
H MODELS 51A @ 250 VAC 50HZ;
S MODELS 0.50MA @ 250 VAC 50HZ;

RATED CURRENT, I_R:

3, 6 & 10 AMP
MODELS AVAILABLE

FILTERED MODELS

HIPOT RATING (ONE MINUTE):
1500 VAC
LINE TO GROUND:
1450 VDC
OPERATING FREQUENCY:
50/60 Hz
RATED VOLTAGE:
120/250 VAC
OPERATING VOLTAGES:
115/230 VAC
SELECTABLE FUSEHOLDER ACCEPTS 1 OR 2 FUSES
1/4" x 1-1/4"
OR 5 x 20mm
OPERATING AMBIENT TEMP.:
-10°C TO +40°C
STORAGE TEMPERATURE:
-40°C TO +85°C
HUMIDITY:
21 DAYS, 40°C @ 95% RH.
CURRENT OVERLOAD TEST:
6 TIMES I_R FOR 8 SECONDS

SELECTABLE FUSEHOLDER ACCEPTS 1 OR 2 FUSES

1/4" x 1-1/4"

OR 5 x 20mm

-10°C TO +40°C

STORAGE TEMPERATURE:

-40°C TO +85°C

HUMIDITY:

21 DAYS, 40°C @ 95% RH.

CURRENT OVERLOAD TEST:

6 TIMES I_R FOR 8 SECONDS

10A @ 120 VAC

10A @ 250 VAC

NONFILTERED MODELS

RATED CURRENT, I_R:

10A @ 120 VAC

10A @ 250 VAC

FILTERED MODELS

MAXIMUM LEAKAGE CURRENT, EACH LINE TO GROUND:

H MODELS 27A @ 120 VAC 60HZ;

S MODELS 0.25M @ 120 VAC 60HZ;

H MODELS 51A @ 250 VAC 50HZ;

S MODELS 0.50MA @ 250 VAC 50HZ;

3, 6 & 10 AMP

MODELS AVAILABLE

RATED CURRENT, I_R:

10A @ 120 VAC

10A @ 250 VAC

NONFILTERED MODELS

RATED CURRENT, I_R:

10A @ 120 VAC

10A @ 250 VAC

FILTERED MODELS

MAXIMUM LEAKAGE CURRENT, EACH LINE TO GROUND:

H MODELS 27A @ 120 VAC 60HZ;

S MODELS 0.25M @ 120 VAC 60HZ;

H MODELS 51A @ 250 VAC 50HZ;

S MODELS 0.50MA @ 250 VAC 50HZ;

3, 6 & 10 AMP

MODELS AVAILABLE

X-ON Electronics

Largest Supplier of Electrical and Electronic Components

Click to view similar products for [AC Power Entry Modules](#) category:

Click to view products by [TE Connectivity](#) manufacturer:

Other Similar products are found below :

[0098.0050](#) [6-1609987-9](#) [6167.0002](#) [7-6609955-2](#) [FN389-4-22](#) [FN9233ER-12-06](#) [FN9233S1-10-06](#) [FN9233S1-8-06](#) [FN9233S1B-8-06](#)
[FN9233S1R-1-06](#) [FN9233S1R-12-06](#) [FN9233SB-1-06](#) [FN9233SB-12-06](#) [FN9233SB-8-06](#) [FN9233SR-10-06](#) [FN9233SR-3-06](#) [FN9244B-15-06](#)
[HI](#) [FN9244EB-3-06](#) [FN9244EB-8-06](#) [FN9244ER-15-06](#) [FN9244ER-8-06](#) [FN9244ES1-8-06](#) [FN9244ESB-8-06](#) [FN9244EU-6-06](#)
[FN9244R-12-06](#) [FN9244R-3-07](#) [FN9244R-8-06](#) [FN9244S1-10-06](#) [FN9244S1-12-06](#) [FN9244S1-3-06](#) [FN9244S1B-6-06](#) [FN9244S1R-3-06](#)
[FN9244S-6-06](#) [FN9244SB-10-06](#) [FN9244SB-6-06](#) [FN9244SB-8-06](#) [FN9244SR-10-06](#) [FN9244SR-6-06](#) [FN9244U-3-06](#) [FN9244U-8-06](#)
[FN9260A-6-06](#) [PE00SSSXB](#) [Fuse-H-EUR-1](#) [Fuse-H-USA-1](#) [PM00XD000](#) [PS0SSDBX0](#) [PS0SXSH3B](#) [A-0701-HT-H](#) [RAPC3FG](#) [15EJMS8](#)