

### Features

- Low Loss
- Low Ripple
- High Crossover Rejection

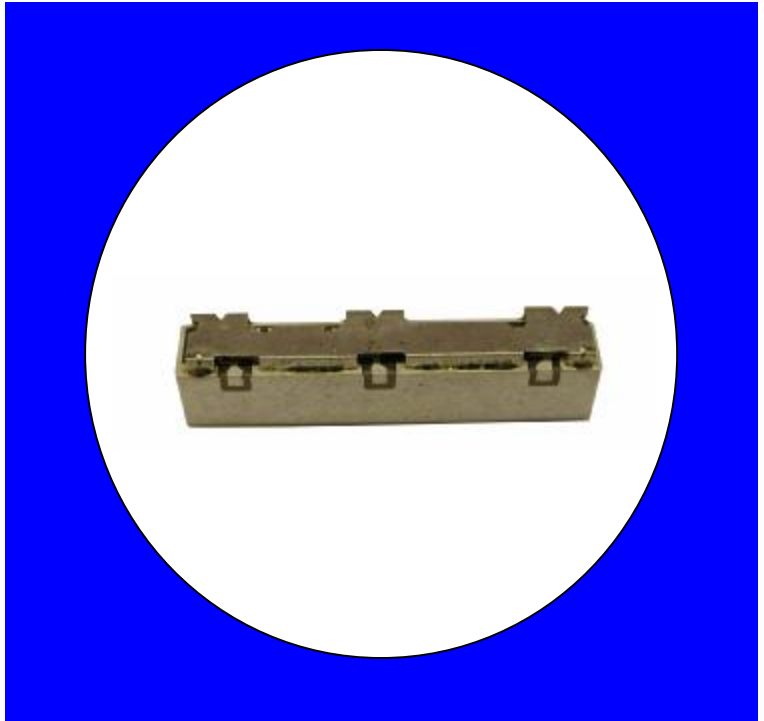
### Description

Surface mount, silver (Ag) coated ceramic Duplexer.

Weight: 3.3 grams typical

Material: Filter is composed of a ceramic block coated with Ag and a shield made of nickel silver plated steel.

Filter complies with RoHS standards.



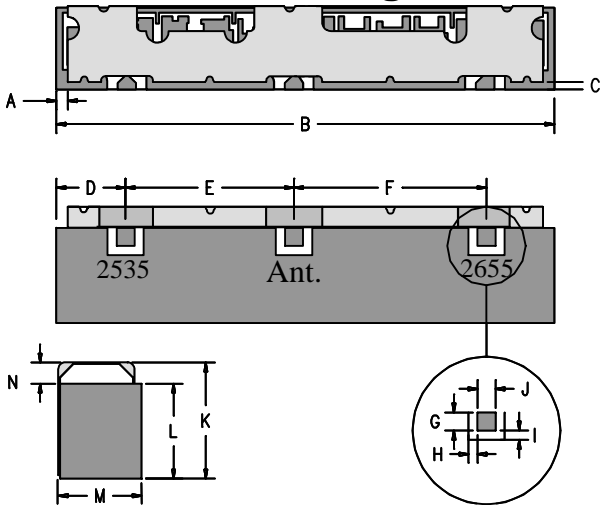
### Electrical Specifications

Parameter	Frequency (MHz)	Typical @ 25°C	Spec. @ 25°C	Spec. Over -40°C to +85°C
<b>Low Band Response</b>				
Passband loss	2500-2570	2.2 dB	2.8 dB max	3 dB max
Passband Return Loss @ Ant	2500-2570	14 dB	12.0 dB min	12.0 dB min
Passband Return Loss @ Port 2	2500-2570	14 dB	12.0 dB min	12.0 dB min
Passband Ripple	2500-2570	1.1 dB	1.5 dB max	1.5 dB max
Attenuation	2620-2690	47.0 dB	45.0 dB min	45.0 dB min
<b>High Band Response</b>				
Passband loss	2620-2690	2.2 dB	2.8 dB max	3 dB max
Passband Return Loss @ Ant	2620-2690	14 dB	12.0 dB min	12.0 dB min
Passband Return Loss @ Port 3	2620-2690	14 dB	12.0 dB min	12.0 dB min
Passband Ripple	2620-2690	1.1 dB	1.5 dB max	1.5 dB max
Attenuation	2500-2570	51 dB	50 dB min	50 dB min
<b>Isolation</b>				
Rejection @ Low Band	2500-2570	51 dB	50 dB min	50 dB min
Rejection @ High Band	2620-2690	47 dB	45 dB min	45 dB min
Power into any port			3 Watts max	

Note: Supplier shall test each filter to the critical electrical specifications of the above table. Any subsequent audits may deviate from in value due to measurement repeatability among different test systems. Such deviations shall not exceed the following limits:

Specification Allowance	
Insertion Loss	0.1 dB
Return Loss	1.0 dB
Stopbands	1.0 dB

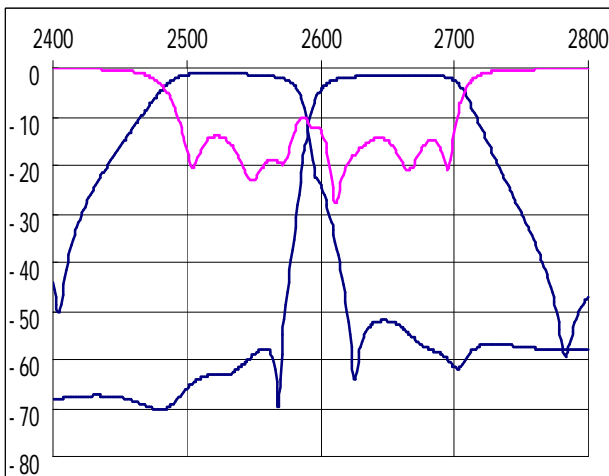
### Mechanical Drawing



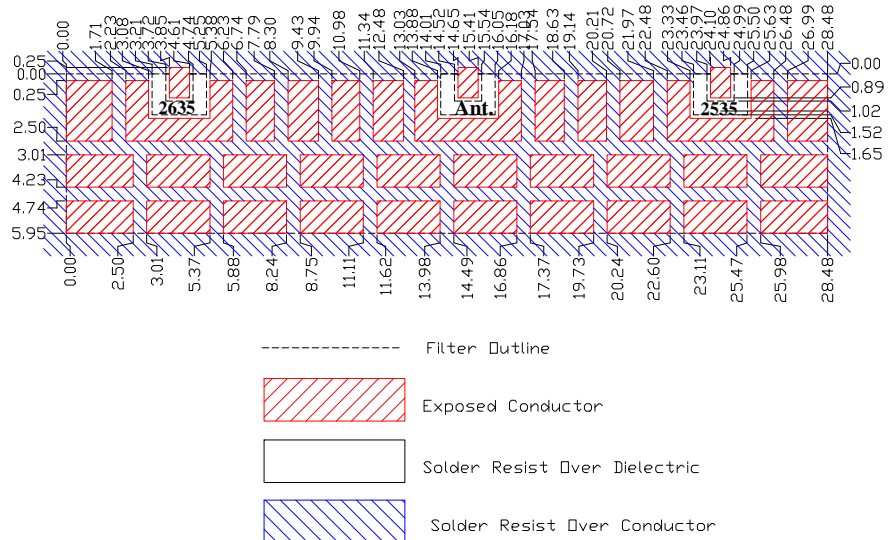
Dim	Nominal (mm)	Tolerance (mm) +/- or max
A	0.64	0.25
B	28.48	max
*C	0.33	min
D	3.90	0.3
E	9.45	0.13
F	10.80	0.13
G	1.02	0.13
H	0.51	0.13
I	0.51	0.13
J	1.02	0.13
K	5.00	max
L	4.10	max
M	4.90	max
N	1.07	0.13

\*Indicates Reference Only

### Electrical response

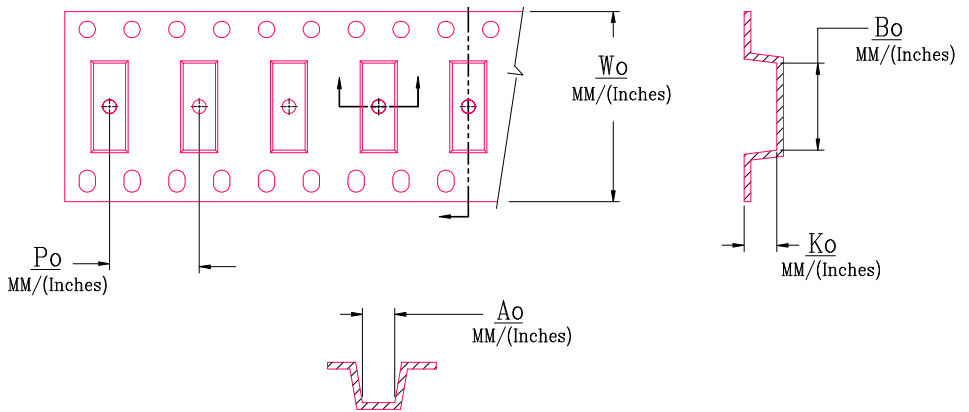


### PCB Layout



### Packaging and Marking

DIMENSION	UNITS	SPECIFICATION
REEL DIAMETER	mm	330
REEL WEIGHT	kg	2.5
REEL QUANTITY	ea.	500



MODEL NO.	Wo	Ao	Bo	Ko	Po
CER0849B	44.0/(1.732)	7.29/(0.287)	28.70/(1.130)	5.18/(0.204)	12.0/(0.472)

## X-ON Electronics

Largest Supplier of Electrical and Electronic Components

*Click to view similar products for [Signal Conditioning](#) category:*

*Click to view products by [CTS](#) manufacturer:*

Other Similar products are found below :

[MAPDCC0004](#) [PD0409J5050S2HF](#) [880157](#) [HHS-109-PIN](#) [DC1417J5005AHF](#) [DC4859J5005AHF](#) [AFS14A30-2185.00-T3](#) [AFS14A35-1591.50-T3](#) [DS-323-PIN](#) [DSS-313-PIN](#) [B39321R801H210](#) [B39321R821H210](#) [B39921B4317P810](#) [1A0220-3](#) [2089-6207-00](#) [JP510S](#) [LFB212G45SG8C341](#) [LFB322G45SN1A504](#) [LFL182G45TC3B746](#) [SF2159E](#) [30057](#) [1P510S](#) [CER0813B](#) [3A325](#) [40287](#) [41180](#) [ATB3225-75032NCT](#) [B69842N5807A150](#) [BD0810N50100AHF](#) [BD2326L50200AHF](#) [BD2425J50200AHF](#) [HMC189AMS8TR](#) [C5060J5003AHF](#) [JHS-114-PIN](#) [JP503AS](#) [DC0710J5005AHF](#) [DC2327J5005AHF](#) [DC3338J5005AHF](#) [43020](#) [LFB2H2G60BB1C106](#) [LFL15869MTC1B787](#) [X3C19F1-20S](#) [XC3500P-20S](#) [10013-20](#) [SF2081E](#) [SF2194E](#) [SF2238E](#) [CDBLB455KCAX39-B0](#) [RF1353C](#) [PD0922J5050D2HF](#)