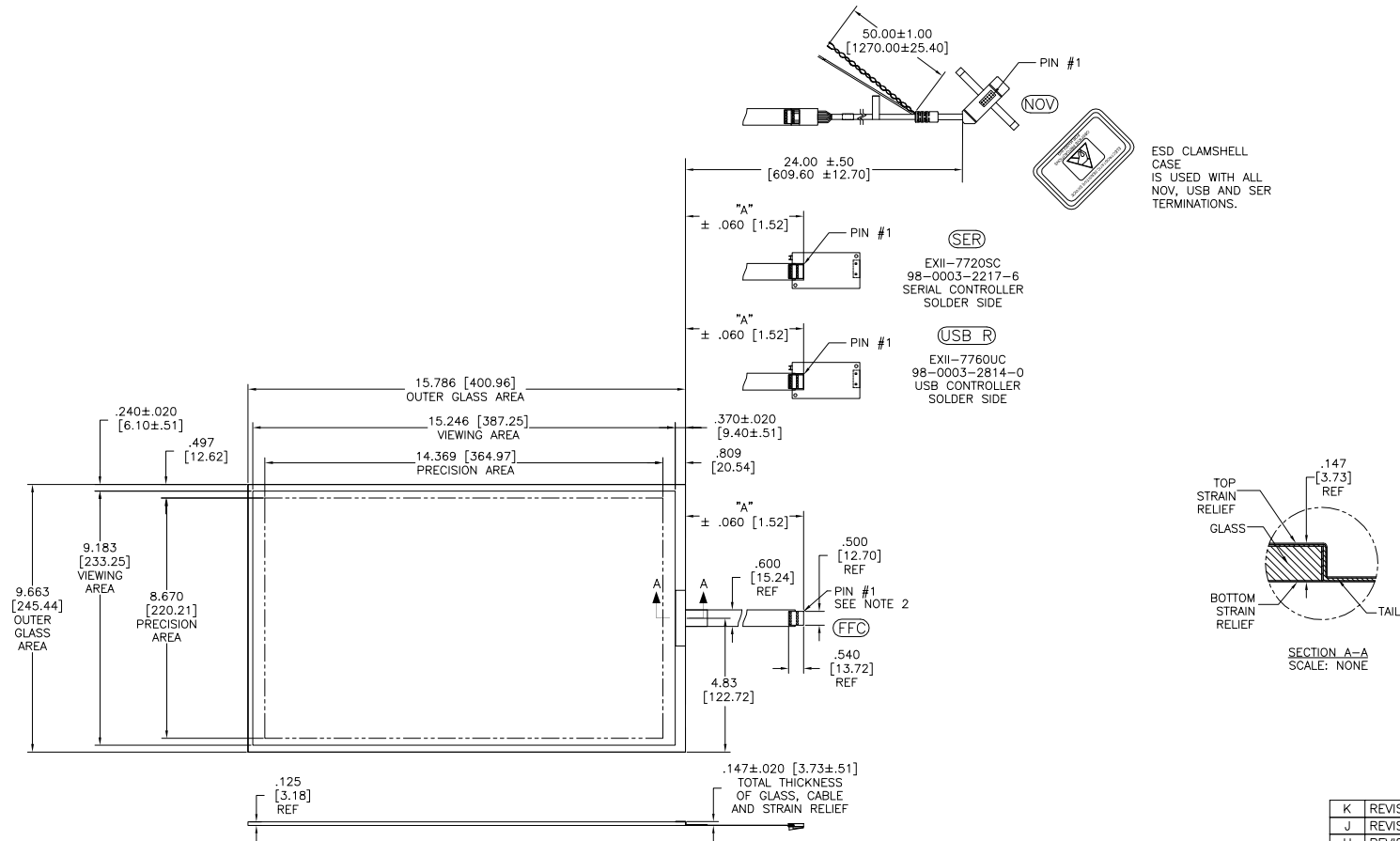


OGA DIAGONAL: 18.51 [470.12]
 VA DIAGONAL: 17.80 [452.07]
 PA DIAGONAL: 16.82 [427.20]

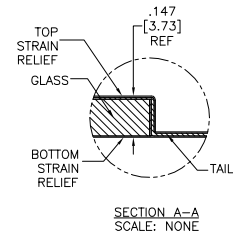
TOP LEVEL NUMBER	US NUMBER	TYPE	DIM "A" (TOTAL GLASS TO CONNECTOR)	A/G FINISH	PROD SPEC
17-9241-205	98-0003-3351-2	FFC	8.00" [203.20]	AG500	23655
17-9241-227	98-0003-2715-9	SER	8.00" [203.20]	AG500	23655
17-9241-206	98-0003-3045-0	NOV	SEE DWG	AG500	23655
17-9241-226	98-0003-3129-2	USB R	8.00" [203.20]	AG500	23655
N/A	98-0003-4227-3	USB R	8.00" [203.20]	AG100	34523
N/A	98-0003-4229-9	SER	8.00" [203.20]	WC100	34523
N/A	98-1100-0097-7	FFC	8.00" [203.20]	WC100	34523



ESD CLAMPSHELL CASE IS USED WITH ALL NOV, USB AND SER TERMINATIONS.

(SER)
 EXII-7720SC
 98-0003-2217-6
 SERIAL CONTROLLER
 SOLDER SIDE

(USB R)
 EXII-7760UC
 98-0003-2814-0
 USB CONTROLLER
 SOLDER SIDE



NOTES:

- WEIGHT OF GLASS IN GRAMS: 781±10%
- NICOMATIC HOUSING P/N: 0L05
 NICOMATIC RECEPTACLES (PINS) MATTE TIN PLATED P/N: 14106-12
 HOUSING ORIENTED WITH LATCH DOWN

PINOUT	
1	UL
2	UR
3	SHLD
4	LR
5	LL

UNITS	INCHES [MM]
TOLERANCES UNLESS OTHERWISE SPECIFIED	
.X	±
.XX	±.03 [.76]
.XXX	±.015 [.38]
ANGLES	±1°
THIRD ANGLE PROJECTION	
DO NOT SCALE DRAWING	
SCALE	1 = 1



© COPYRIGHT 2004
 THIS DOCUMENT IS COPYRIGHTED PROPERTY OF THE 3M COMPANY AND MAY NOT BE REPRODUCED WITHOUT 3M WRITTEN PERMISSION OR USED OR DISCLOSED FOR OTHER THAN 3M AUTHORIZED PURPOSES.

DRAWN MTD 9/7/06

K	REVISED PER CO 036265	4/13	SB
J	REVISED PER CO 036100	2/13	SEB
H	REVISED PER CO 035587	10/12	SB
REV	CHANGE NOTICE	DATE	DRW

TITLE			
MARKETING DRAWING SCT32NN 17.80"			
CAD FORMAT	AUTOCAD	SHEET	1 OF 1
SIZE	C	DOCUMENT NO.	TSD-32734
REV			K