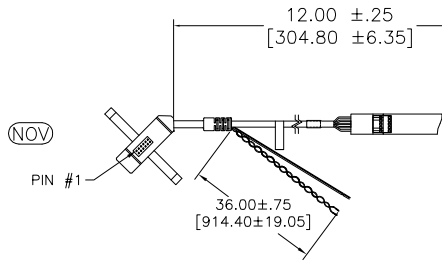


OGA DIAGONAL: 16.40 [416.59]  
 VA DIAGONAL: 15.68 [398.29]  
 PA DIAGONAL: 14.79 [375.72]



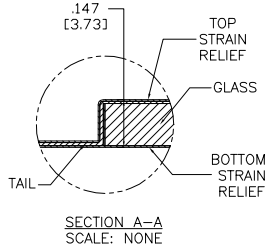
**(DUAL)**  
 98-0003-3818-0  
 DUAL MODE CONTROLLER  
 SOLDER SIDE

**(SER)**  
 EXII-7720SC  
 98-0003-2217-6  
 SERIAL CONTROLLER  
 SOLDER SIDE

**(HID M)**  
 EXII-7730HC  
 98-0003-2813-2  
 HID CONTROLLER  
 SOLDER SIDE

**(USB R)**  
 EXII-7760UC  
 98-0003-2814-0  
 USB CONTROLLER  
 SOLDER SIDE

ESD CLAMSHELL CASE  
 IS USED WITH ALL  
 NOV, USB AND SER  
 TERMINATIONS.

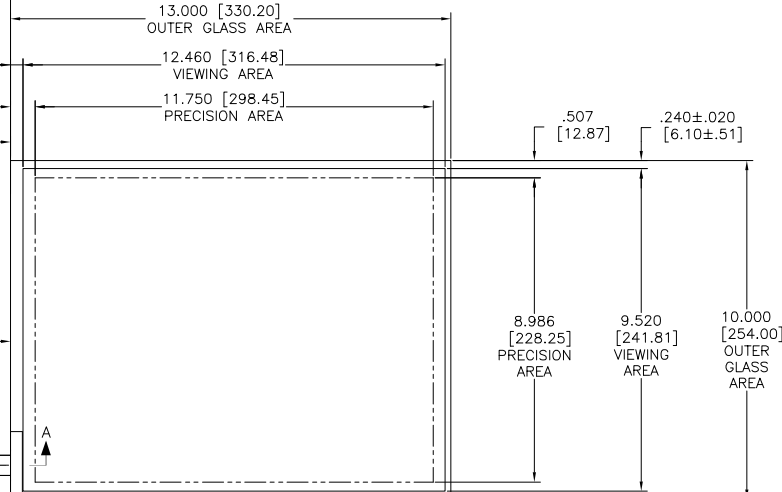


**(FFC)**

PIN #1  
 SEE NOTE 2

.147 ±.020 [3.73 ±.51]  
 TOTAL THICKNESS  
 OF GLASS, CABLE  
 AND STRAIN RELIEF

| TOP LEVEL NUMBER | US 98 NUMBER   | TYPE  | DIM "A" (TOTAL GLASS TO CONNECTOR) | A/G FINISH | PROD SPEC |
|------------------|----------------|-------|------------------------------------|------------|-----------|
| 17-8031-203      | 98-0003-2511-2 | FFC   | 4.27" [108.46]                     | AG500      | 23655     |
| 17-8031-204      | 98-0003-2513-8 | FFC   | 6.00" [152.40]                     | AG500      | 23655     |
| 17-8031-205      | 98-0003-2514-6 | FFC   | 8.00" [203.20]                     | AG500      | 23655     |
| 17-8031-206      | 98-0003-2515-3 | NOV   | SEE DWG                            | AG500      | 23655     |
| 17-8031-221      | 98-0003-2521-1 | SER   | 4.27" [108.46]                     | AG500      | 23655     |
| 17-8031-223      | 98-0003-2522-9 | SER   | 6.00" [152.40]                     | AG500      | 23655     |
| 17-8031-227      | 98-0003-2525-2 | SER   | 8.00" [203.20]                     | AG500      | 23655     |
| 17-8031-218      | 98-0003-2519-5 | USB R | 4.27" [108.46]                     | AG500      | 23655     |
| 17-8031-226      | 98-0003-2919-7 | USB R | 8.00" [203.20]                     | AG500      | 23655     |
| 17-8031-230      | 98-0003-2921-3 | HID M | 8.00" [203.20]                     | AG500      | 23655     |
| N/A              | 98-0003-3972-5 | DUAL  | 8.00" [203.20]                     | AG500      | 23655     |
| N/A              | 98-1100-0093-6 | FFC   | 8.00" [203.20]                     | WC100      | 34523     |
| N/A              | 98-1100-0094-4 | USB R | 8.00" [203.20]                     | WC100      | 34523     |



- NOTES:
- WEIGHT OF GLASS IN GRAMS: 639 ±10%
  - NICOMATIC HOUSING P/N: OL05  
 NICOMATIC RECEPTACLES (PINS) MATTE TIN PLATED P/N: 14106-12  
 HOUSING ORIENTED WITH LATCH DOWN

| PINOUT |      |
|--------|------|
| 1      | LR   |
| 2      | LL   |
| 3      | SHLD |
| 4      | UL   |
| 5      | UR   |

|                                       |             |
|---------------------------------------|-------------|
| UNITS                                 | INCHES [MM] |
| TOLERANCES UNLESS OTHERWISE SPECIFIED |             |
| .X                                    | ±           |
| .XX                                   | ±.03 [.76]  |
| .XXX                                  | ±.015 [.38] |
| ANGLES                                | ±1°         |
| THIRD ANGLE PROJECTION                |             |
| DO NOT SCALE DRAWING                  |             |
| SCALE                                 | 1 = 1       |

**3M** 3M TOUCH SYSTEMS  
 METHUEN, MA  
 USA

© COPYRIGHT 2005  
 THIS DOCUMENT IS COPYRIGHTED PROPERTY OF THE  
 3M COMPANY AND MAY NOT BE REPRODUCED  
 WITHOUT 3M WRITTEN PERMISSION OR USED OR  
 DISCLOSED FOR OTHER THAN 3M AUTHORIZED  
 PURPOSES.

DRAWN: CROWLEY 9/05

|                   |                       |              |           |
|-------------------|-----------------------|--------------|-----------|
| L                 | REVISED PER CO 036099 | 2/13         | SB        |
| REV               | CHANGE NOTICE         | DATE         | DRW       |
| TITLE             |                       |              |           |
| MARKETING DRAWING |                       |              |           |
| SCT32NN 15.68"    |                       |              |           |
| CAD FORMAT        | AUTOCAD               | SHEET        | 1 OF 1    |
| SIZE              | C                     | DOCUMENT NO. | TSD-28138 |
| REV               | L                     |              |           |