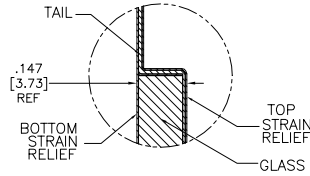


OGA DIAGONAL: 25.31 [642.89]  
 VA DIAGONAL: 24.62 [625.22]  
 PA DIAGONAL: 23.19 [589.02]

TOP LEVEL NUMBER	US NUMBER	TYPE	DIM "A" (TOTAL GLASS TO CONNECTOR)	A/G FINISH	PROD SPEC
17-9291-205	98-0003-2727-4	FFC	8.00" [203.20]	AG500	23655
17-9291-227	98-0003-2729-0	SER	8.00" [203.20]	AG500	23655
17-9291-226	98-0003-3048-4	USB R	8.00" [203.20]	AG500	23655



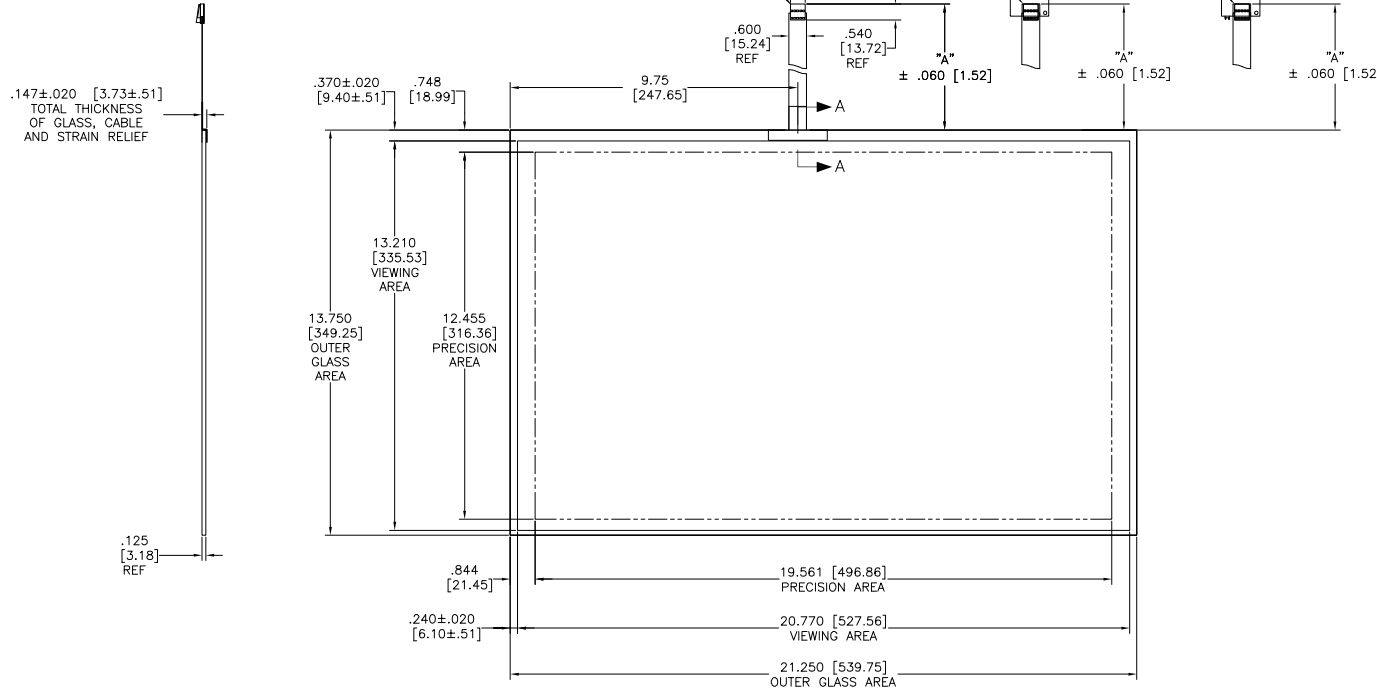
SECTION A-A  
SCALE: NONE

(USB R)  
 EXII-7760UC  
 98-0003-2814-0  
 USB CONTROLLER  
 SOLDER SIDE

(SER)  
 EXII-7720SC  
 98-0003-2217-6  
 SERIAL CONTROLLER  
 SOLDER SIDE



ESD CLAMSHHELL CASE IS USED WITH ALL USB AND SER TERMINATIONS.



NOTES:

1. WEIGHT OF GLASS IN GRAMS: 1496±10%
2. NICOMATIC HOUSING P/N: OLO5  
 NICOMATIC RECEPTACLES (PINS) MATTE TIN PLATED P/N: 14106-12  
 HOUSING ORIENTED WITH LATCH DOWN

PINOUT	
1	LL
2	UL
3	SHLD
4	UR
5	LR

UNITS	INCHES [MM]
TOLERANCES UNLESS OTHERWISE SPECIFIED	
.X	±
.XX	±.03 [.76]
.XXX	±.015 [.38]
ANGLES	±1°
THIRD ANGLE PROJECTION	
DO NOT SCALE DRAWING	
SCALE	1 = 1

**3M** 3M TOUCH SYSTEMS  
 METHUEN, MA  
 USA  
 © COPYRIGHT 2004  
 THIS DOCUMENT IS COPYRIGHTED PROPERTY OF THE 3M COMPANY AND MAY NOT BE REPRODUCED WITHOUT 3M WRITTEN PERMISSION OR USED OR DISCLOSED FOR OTHER THAN 3M AUTHORIZED PURPOSES.

DRAWN MTD 1/17/06

G	REVISED PER CO 036256	4/13	SB
F	REVISED PER CO 034264	2/12	SB
E	REVISED PER CO 033456	9/11	SB
REV	CHANGE NOTICE	DATE	DRW

TITLE			
MARKETING DRAWING SCT32NN 24.62" W			
CAD FORMAT	AUTOCAD	SHEET	1 OF 1
SIZE	DOCUMENT NO.	REV	
C	33407-MKT	G	