

OGA DIAGONAL: 18.05 [458.50]
 VA DIAGONAL: 17.34 [440.38]
 PA DIAGONAL: 16.35 [415.30]

TOP LEVEL NUMBER	US NUMBER	TYPE	DIM "A" (TOTAL GLASS TO CONNECTOR)	A/G FINISH	PROD SPEC
17-8901-205	98-0003-2665-6	FFC	8.00" [203.20]	AG500	23655
17-8901-227	98-0003-2203-6	SER	8.00" [203.20]	AG500	23655
17-8901-206	98-0003-2666-4	NOV	SEE DWG	AG500	23655
17-8901-226	98-0003-3025-2	USB R	8.00" [203.20]	AG500	23655



ESD CLAMSHELL CASE IS USED WITH ALL NOV, USB AND SER TERMINATIONS.

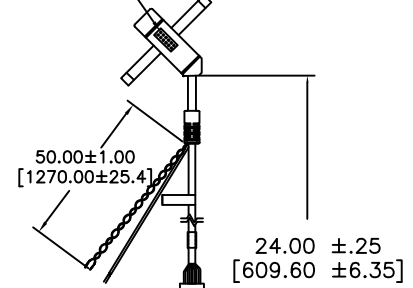
(USB R)

EXII-7760UC
 98-0003-2814-0
 USB CONTROLLER
 SOLDER SIDE

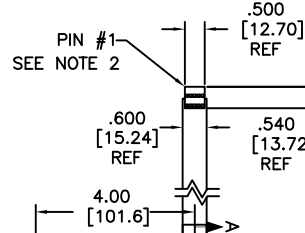
(SER)

EXII-7720SC
 98-0003-2217-6
 SERIAL CONTROLLER
 SOLDER SIDE

PIN #1 (NOV)



(FFC)



PIN #1

PIN #1

PIN #1

.147 ± .020 [3.73 ± .51]
 TOTAL THICKNESS OF GLASS, CABLE AND STRAIN RELIEF

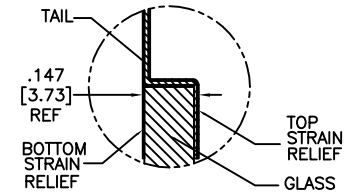
.370 ± .020 [9.40 ± .51]
 .678 [17.22]

"A" ± .060 [1.52]

"A" ± .060 [1.52]

"A" ± .060 [1.52]

11.429 [290.30] OUTER GLASS AREA
 10.889 [276.58] VIEWING AREA
 10.273 [260.93] PRECISION AREA



SECTION A-A
 SCALE: NONE

PINOUT	
1	LL
2	UL
3	SHLD
4	UR
5	LR

.125 [3.18] REF

.626 [15.90]
 .240 ± .020 [6.10 ± .51]
 12.720 [323.09] PRECISION AREA
 13.492 [342.70] VIEWING AREA
 13.972 [354.89] OUTER GLASS AREA

NOTES:

1. WEIGHT OF GLASS IN GRAMS: 785 ± 10%
2. NICOMATIC HOUSING P/N: OLO5
 NICOMATIC RECEPTACLES (PINS) MATTE TIN PLATED P/N: 14106-12
 HOUSING ORIENTED WITH LATCH DOWN

UNITS INCHES [MM]

TOLERANCES UNLESS OTHERWISE SPECIFIED
 .X ±
 .XX ± .03 [.76]
 .XXX ± .015 [.38]
 ANGLES ± 1°



DO NOT SCALE DRAWING

SCALE 1 = 1



3M TOUCH SYSTEMS
 METHUEN, MA
 USA
 © COPYRIGHT 2004
 THIS DOCUMENT IS COPYRIGHTED PROPERTY OF THE 3M COMPANY AND MAY NOT BE REPRODUCED WITHOUT 3M WRITTEN PERMISSION OR USED OR DISCLOSED FOR OTHER THAN 3M AUTHORIZED PURPOSES.

DRAWN A. OUELLETTE 12/05

REV	CHANGE NOTICE	DATE	DRW
H	REVISE PER CO 036256	4/13	SB
G	REVISE PER CO 033533	11/11	SB
F	REVISE PER CO 033064	6/11	SB

TITLE			
MARKETING DRAWING SCT32NN 17.34"			
DATE	4/13	BY	SB
SCALE	C	DOCUMENT NO.	29615-MKT
REV	H	SHEET	1 OF 1