

OGA DIAGONAL: 18.05 [458.50]  
VA DIAGONAL: 17.34 [440.38]  
PA DIAGONAL: 16.35 [415.30]

TOP LEVEL NUMBER	US NUMBER	TYPE	DIM "A" (TOTAL GLASS TO CONNECTOR)	A/G FINISH	PROD SPEC
17-8901-205	98-0003-2665-6	FFC	8.00" [203.20]	AG500	23655
17-8901-227	98-0003-2203-6	SER	8.00" [203.20]	AG500	23655
17-8901-206	98-0003-2666-4	NOV	SEE DWG	AG500	23655
17-8901-226	98-0003-3025-2	USB R	8.00" [203.20]	AG500	23655



ESD CLAMSHELL  
CASE  
IS USED WITH ALL  
NOV, USB AND SER  
TERMINATIONS.

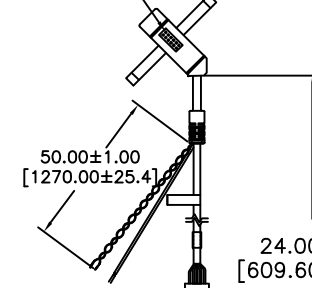
(USB R)

EXII-7760UC  
98-0003-2814-0  
USB CONTROLLER  
SOLDER SIDE

(SER)

EXII-7720SC  
98-0003-2217-6  
SERIAL CONTROLLER  
SOLDER SIDE

PIN #1 (NOV)



(FFC)

PIN #1  
SEE NOTE 2

PIN #1

PIN #1

PIN #1

.147 ± .020 [3.73 ± .51]  
TOTAL THICKNESS  
OF GLASS, CABLE  
AND STRAIN RELIEF

.370 ± .020 [9.40 ± .51]  
.678 [17.22]

.600 [15.24]  
REF

.500 [12.70]  
REF

.540 [13.72]  
REF

4.00 [101.6]

± .060 [1.52]

± .060 [1.52]

± .060 [1.52]

11.429 [290.30]  
OUTER GLASS  
AREA

10.889 [276.58]  
VIEWING  
AREA

10.273 [260.93]  
PRECISION  
AREA

.125 [3.18]  
REF

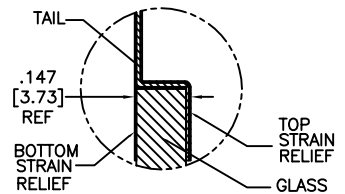
.626 [15.90]

.240 ± .020 [6.10 ± .51]

12.720 [323.09]  
PRECISION AREA

13.492 [342.70]  
VIEWING AREA

13.972 [354.89]  
OUTER GLASS AREA



SECTION A-A  
SCALE: NONE

PINOUT	
1	LL
2	UL
3	SHLD
4	UR
5	LR

NOTES:

1. WEIGHT OF GLASS IN GRAMS: 785 ± 10%
2. NICOMATIC HOUSING P/N: OLO5  
NICOMATIC RECEPTACLES (PINS) MATTE TIN PLATED P/N: 14106-12  
HOUSING ORIENTED WITH LATCH DOWN

UNITS INCHES [MM]	3M TOUCH SYSTEMS METHUEN, MA USA
TOLERANCES UNLESS OTHERWISE SPECIFIED	© COPYRIGHT 2004 THIS DOCUMENT IS COPYRIGHTED PROPERTY OF THE 3M COMPANY AND MAY NOT BE REPRODUCED WITHOUT 3M WRITTEN PERMISSION OR USED OR DISCLOSED FOR OTHER THAN 3M AUTHORIZED PURPOSES.
THIRD ANGLE PROJECTION	DRAWN A. OUELLETTE 12/05
DO NOT SCALE DRAWING	CAD FORMAT AUTOCAD
SCALE 1 = 1	SHEET 1 OF 1

H	REVISE PER CO 036256	4/13	SB
G	REVISE PER CO 033533	11/11	SB
F	REVISE PER CO 033064	6/11	SB
REV	CHANGE NOTICE	DATE	DRW
TITLE MARKETING DRAWING SCT32NN 17.34"			
SIZE C	DOCUMENT NO. 29615-MKT	REV H	