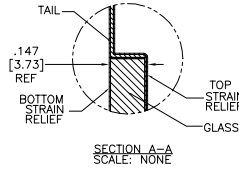


OGA DIAGONAL: 18.25 [463.63]
 VA DIAGONAL: 17.54 [445.50]
 PA DIAGONAL: 16.54 [420.12]

TOP LEVEL NUMBER	US NUMBER	TYPE	DIM "A" (TOTAL GLASS TO CONNECTOR)	A/G FINISH	PROD SPEC
17-8421-203	98-0003-2589-8	FFC	4.27" [108.46]	AG500	23655
17-8421-221	98-0003-2596-3	SER	4.27" [108.46]	AG500	23655
17-8421-204	98-0003-2590-6	FFC	6.00" [152.40]	AG500	23655
17-8421-223	98-0003-2597-1	SER	6.00" [152.40]	AG500	23655
17-8421-227	98-0003-2599-7	SER	8.00" [203.20]	AG500	23655
17-8421-205	98-0003-2591-4	FFC	8.00" [203.20]	AG500	23655
17-8421-206	98-0003-2190-5	NOV	SEE DWG	AG500	23655
17-8421-218	98-0003-2594-8	USB R	4.27" [108.46]	AG500	23655
17-8421-220	98-0003-3151-6	USB R	6.00" [152.40]	AG500	23655
17-8421-226	98-0003-3152-4	USB R	8.00" [203.20]	AG500	23655
17-8421-230	98-0003-2276-2	HID M	8.00" [203.20]	AG500	23655
N/A	98-0003-3537-6	HID D	8.00" [203.20]	AG500	23655
N/A	98-0003-3974-1	DUAL	8.00" [203.20]	AG500	23655
N/A	98-1100-0095-1	FFC	8.00" [203.20]	WC100	34523
N/A	98-1100-0096-9	USB R	8.00" [203.20]	WC100	34523

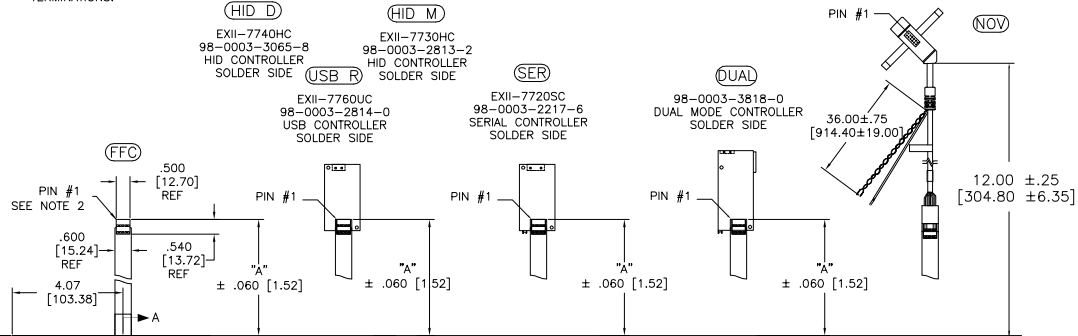
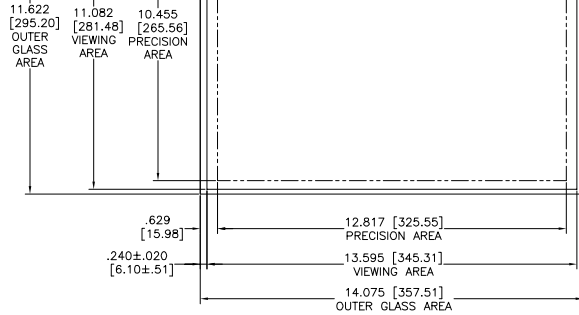


ESD CLAMSHELL CASE IS USED WITH ALL NOV, USB AND SER TERMINATIONS.



.147±.020 [3.73±.51]
 TOTAL THICKNESS OF GLASS, CABLE AND STRAIN RELIEF

.125 [3.18] REF



- NOTES:
- WEIGHT OF GLASS IN GRAMS: 804±10%
 - NICOMATIC HOUSING P/N: OLOS
 - NICOMATIC RECEPTACLES (PINS) MATTE TIN PLATED P/N: 14106-12 HOUSING ORIENTED WITH LATCH DOWN

PINOUT	
1	LL
2	UL
3	SHLD
4	UR
5	LR

UNITS	INCHES [MM]
TOLERANCES UNLESS OTHERWISE SPECIFIED	
.X	±
.XX	±.03 [.76]
.XXX	±.015 [.38]
ANGLES	±1°

3M 3M TOUCH SYSTEMS
 METHUEN, MA USA

© COPYRIGHT 2004
 THIS DOCUMENT IS COPYRIGHTED PROPERTY OF THE 3M COMPANY AND MAY NOT BE REPRODUCED WITHOUT 3M WRITTEN PERMISSION OR USED OR DISCLOSED FOR OTHER THAN 3M AUTHORIZED PURPOSES.

THIRD ANGLE PROJECTION

DO NOT SCALE DRAWING

SCALE 1 = 1

REV	CHANGE NOTICE	DATE	DRW
P	REVISED PER CO 036265	4/13	SEB
N	REVISED PER CO 036100	2/13	SEB

TITLE
 MARKETING DRAWING
 SCT32NN 17.54"

CAD FORMAT AUTOCAD SHEET 1 OF 1

SIZE C DOCUMENT NO. TSD-28165 REV P