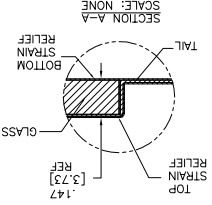


OGA DIAGONAL: 28.63 [727.24]
 VA DIAGONAL: 26.28 [667.40]
 PA DIAGONAL: 24.80 [629.95]

ESD CLAMSHIELD
 IS USED WITH ALL
 NOV, USB AND SER
 TERMINATIONS.

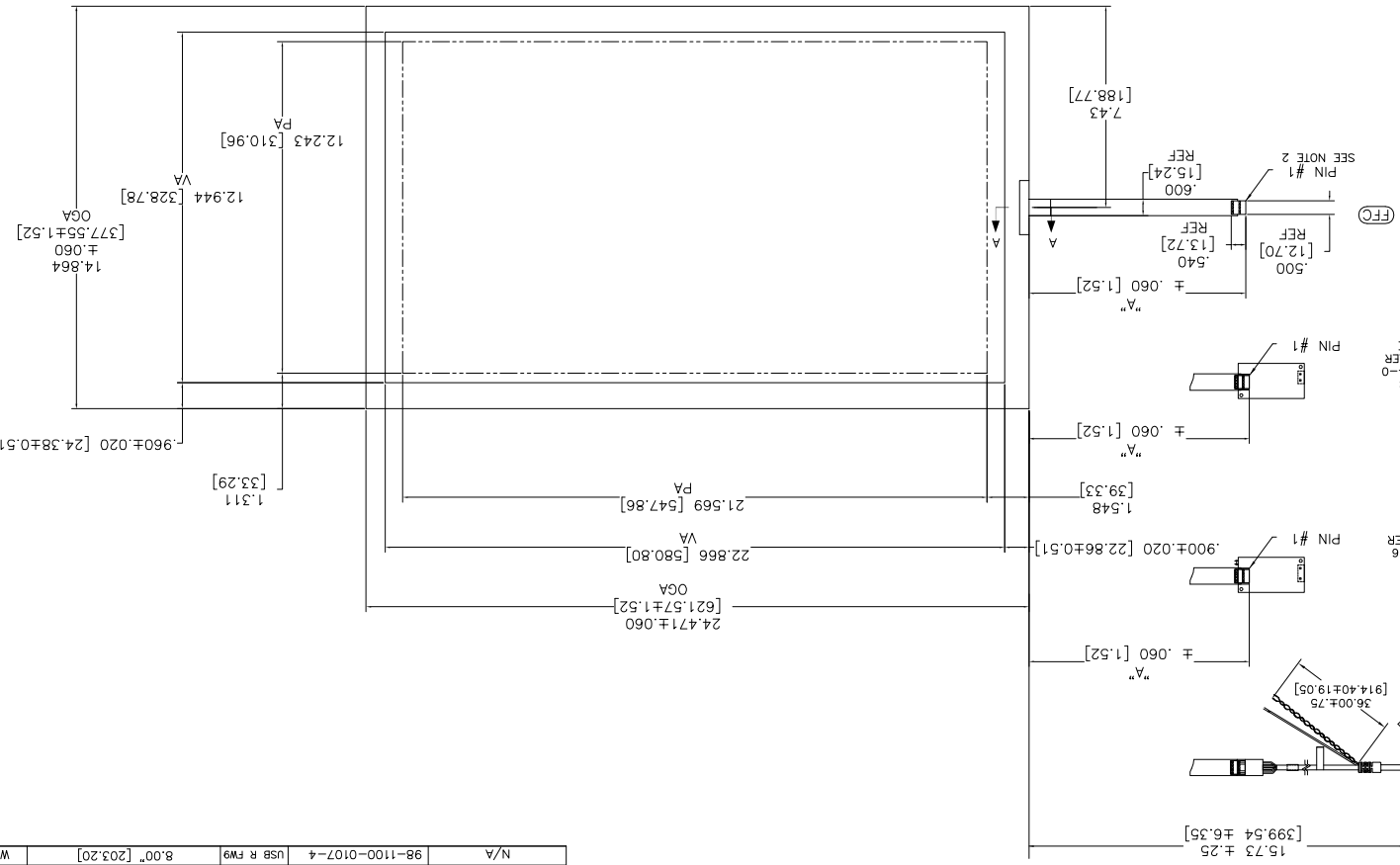
EXII-7720SC
 SERIAL CONTROLLER
 98-0003-2217-6

EXII-7769UC
 USB R FW9
 98-0003-2814-7
 EXII-7760UC
 USB R
 98-0003-2814-0
 USB CONTROLLER
 SOLDER SIDE



- NOTES:
1. WEIGHT OF GLASS IN GRAMS: 1788±10%
 2. NICOMATIC HOUSING P/N: 0105
 3. NICOMATIC RECEPTACLES (PINS) MATTE TIN PLATED P/N: 14106-12
 4. HOUSING ORIENTED WITH LATCH DOWN

.147±.020 [3.73±.51]
 TOTAL THICKNESS
 OF GLASS, CABLE
 AND STRAIN RELIEF



1	LR
2	LL
3	SHLD
4	UL
5	UR

PINOUT

INCHES [MM]

3.00 [76.2]
 2.00 [50.8]
 1.00 [25.4]

DO NOT SCALE DRAWING

DATE: 5/23/06
 BY: MTD
 CHECKED: AUTOCAD

SCALE: 1 OF 1

TOP LEVEL NUMBER	US NUMBER	TYPE	DIM "A" TOTAL GLASS TO CONNECTOR	A/G FINISH	PRD SPEC
17-8931-205	98-0003-2673-0	FFC	8.00" [203.20]	AS500	23655
17-8931-227	98-0003-2204-4	SER	8.00" [203.20]	AS500	23655
17-8931-206	98-0003-2674-8	NOV	SEE DWG	AS500	23655
17-8931-226	98-0003-3028-6	USB R	8.00" [203.20]	AS500	23655
98-0003-3647-3	USB R	8.00" [203.20]	WC100	34523	
N/A					
98-1100-0124-9	USB R FW9	8.00" [203.20]	AS500	23655	
98-1100-0098-5	FFC	8.00" [203.20]	WC100	34523	
N/A					
98-1100-0107-4	USB R FW9	8.00" [203.20]	WC100	34523	

MARKETING DRAWING

SCT323NN 26.28" W

REVISED PER CO 036265 4/13 SB

REVIEWED PER CO 036120 2/13 SB

DATE: 5/23/06

BY: MTD

CHECKED: AUTOCAD

SCALE: 1 OF 1

X-ON Electronics

Largest Supplier of Electrical and Electronic Components

Click to view similar products for [LCD Touch Panels](#) category:

Click to view products by [3M](#) manufacturer:

Other Similar products are found below :

[69-502](#) [87-6001-221](#) [CABLE/RTP/USB](#) [98-0003-2211-9](#) [17-8041-226](#) [17-8041-227](#) [CABLE/RTP/RS232](#) [87-4011-201](#) [N010-0554-T352](#)
[N010-0554-T504](#) [LCDAL04-0430TL0NCNTBR1.0](#) [FTAS00-8.4AS-4A](#) [FTAS00-10.6AW-4A](#) [FTAS00-5.7AS-4A](#) [FTAS00-15.6AW-4A](#)
[FTAS00-10.4AS-4A](#) [FTAS00-12.1AN-4A](#) [TP01150A-4KB](#) [TP01121W-4KB](#) [TP01104A-4KB](#) [N010-0554-T814](#) [TP01121A-4KB](#)
[TP01106W-4KB](#) [FTAS00-12.1AN-4](#) [98000334502](#) [FTAS00-12.1AW-4](#) [FTAS00-10.6AW-4](#) [TKU016CT-A100](#) [FTAS00-19AN-4](#) [FTAS00-](#)
[15AN-4](#) [FTAS00-15.6AW-4](#) [FTAS00-12.1AW-4A](#) [17-8041-205](#) [98-0003-2514-6](#) [98-0003-2549-2](#) [98-0003-2602-9](#) [98-0003-2678-9](#) [17-](#)
[8031-205](#) [17-8051-205](#) [17-8091-203](#) [17-8421-205](#) [17-8441-205](#) [17-8441-217](#) [17-8541-226](#) [17-8571-203](#) [17-8581-203](#) [17-8891-205](#) [17-](#)
[8901-226](#) [17-9681-226](#) [29368](#)