

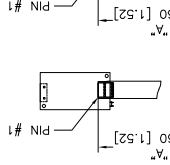
OGA DIAGONAL: 21.36 [542.51]
 VA DIAGONAL: 20.65 [524.59]
 PA DIAGONAL: 19.46 [494.24]

TOP LEVEL NUMBER	US NUMBER	TYPE	DIM "A" (TO PL. GLASS TO CONNECTOR)	A/G FINISH	PROD SPEC
17-9261-205	98-0003-2721-7	F/C	8.00" [203.20]	AG500	23655
17-9261-227	98-0003-2724-1	SER	8.00" [203.20]	AG500	23655
17-9261-206	98-0003-2722-5	NOV	SEE DWG	AG500	23655
17-9261-226	98-0003-3047-6	USB R	8.00" [203.20]	AG500	23655
N/A	98-0003-3536-8	HID D	8.00" [203.20]	AG500	23655
N/A	98-1100-0105-8	F/C	8.00" [203.20]	WC100	34523
N/A	98-1100-0106-6	USB R	8.00" [203.20]	WC100	34523

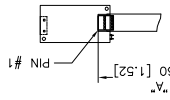
ESD CLAMPSHELL
 CASE IS USED WITH ALL
 NOV, USB AND SER
 TERMINATIONS.



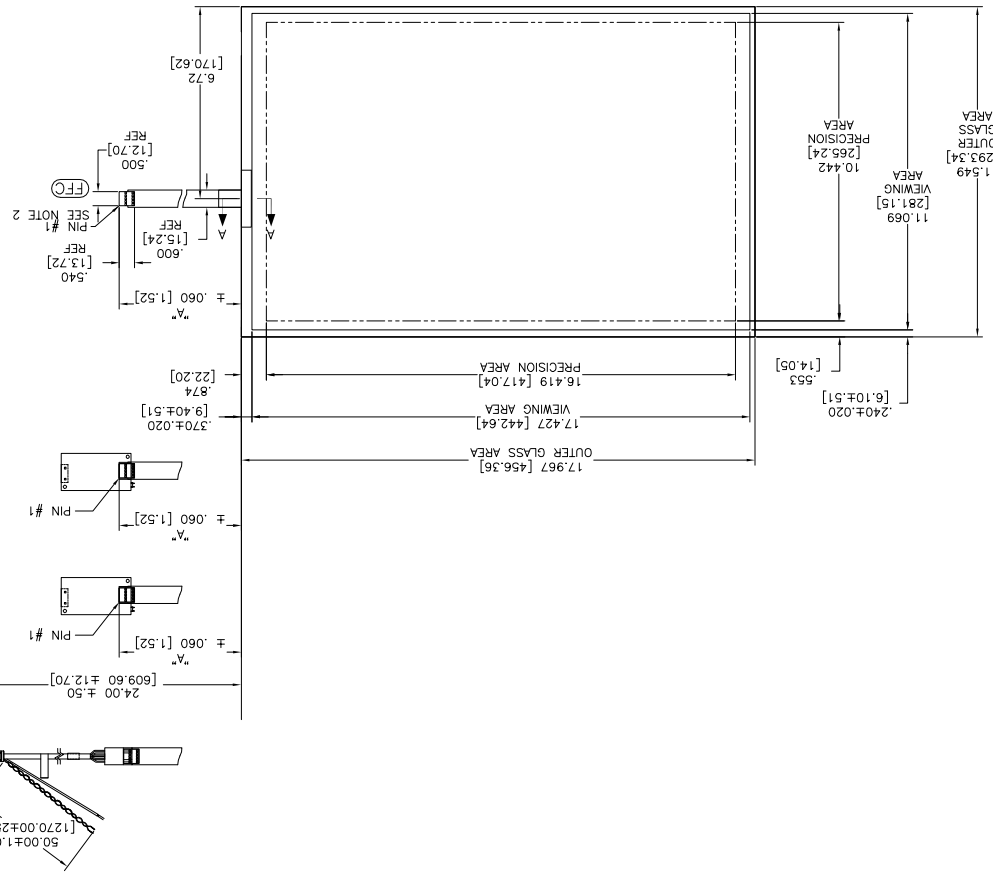
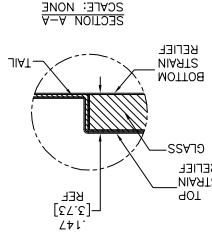
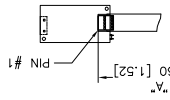
(SER)
 SERIAL CONTROLLER
 EXII-77205C
 98-0003-2217-6
 SOLDER SIDE



(HID D)
 HID CONTROLLER
 EXII-7740HC
 98-0003-3065-8
 SOLDER SIDE



(USB R)
 USB CONTROLLER
 EXII-7760UC
 98-0003-2814-0
 SOLDER SIDE



.125
 [3.18]
 REF
 TOTAL THICKNESS
 OF GLASS, CABLE
 AND STRAIN RELIEF
 .147±.020 [3.73±.51]

17.967 [456.56] OUTER GLASS AREA
 17.427 [442.64] WEAVING AREA
 16.419 [417.04] PRECISION AREA
 11.549 [293.34] OUTER GLASS AREA
 11.069 [281.15] WEAVING AREA
 10.442 [266.24] PRECISION AREA

PINOUT

5	LL
4	LR
3	SHLD
2	UR
1	UL

UNITS INCHES [MM]
 3M TOUCH SYSTEMS
 METHUEN, MA USA
 COPYRIGHT 2004
 THIS DOCUMENT IS COPYRIGHTED PROPERTY OF THE
 3M COMPANY AND MAY NOT BE REPRODUCED
 WITHOUT THE WRITTEN PERMISSION OR USED FOR
 PURPOSES OTHER THAN 3M AUTHORIZED
 PURPOSES.
 THIRD ANGLE PROJECTION
 DO NOT SCALE DRAWING
 SCALE 1 = 1

9/7/06 MTD
 9/7/06
 DRAWN
 MTD
 9/7/06
 DATE
 9/7/06
 DRAWN
 MTD
 9/7/06
 DATE

REV	DATE	DESCRIPTION
K	4/13	REVISD PER CO 036265
J	2/13	REVISD PER CO 036101
SB		

MARKETING DRAWING
 SCT32NN 20.65" W
 AUTOCAD
 SHEET 1 OF 1
 TSD-32744
 REV K

NOTES:
 1. WEIGHT OF GLASS IN GRAMS: 1062±10%
 2. NICKOMATIC HOUSING P/N: 0105
 HOUSING ORIENTED WITH LATCH DOWN
 P/N: 14106-12

X-ON Electronics

Largest Supplier of Electrical and Electronic Components

Click to view similar products for [3m manufacturer](#):

Other Similar products are found below :

[SC401U](#) [98-0003-3071-6](#) [80-0012-6467-2](#) [00-054007-70220-7](#) [00-054007-34717-0](#) [5952-3/4"x15yds](#) [021200-40230](#) [6840-2X50-GRAY](#)
[6A11-A0121-007.0-0](#) [701-W](#) [7993MP-2CIRCLE-100](#) [FDV14-187C](#) [8124/14](#) [8124/20-100](#) [812510-100](#) [8125/17](#) [813216](#) [8204-3LFM](#) [8425-](#)
[8](#) [MNG14BCX](#) [FP301-1/8-6"-Black](#) [FP-301 18 BLACK 500](#) [FV14-6C](#) [920102-01-25-R](#) [927739-40](#) [929835-01-28-RK](#) [929974-01-40-R](#)
[951240-2520-AR-PR](#) [960X/980X](#) [98-0003-3075-7](#) [HF365/16SF](#) [HF36564-100](#) [HF625/26-30](#) [1/2-5-4492W](#) [1/2-5-4951](#) [1/2-5-5430](#) [1/2-5-](#)
[850S](#) [1/2-5-3431](#) [12X12-6-4056B](#) [12X12-6-433](#) [12X12-6-4930](#) [13-500-NB](#) [14526-EZ5B-300-02C](#) [1-4-4658F](#) [14520-EZAB-300-0EC](#)
[DSTK9013-3420](#) [DSTK9015-3402](#) [14T26-SZLB-200-0LC](#) [14T50-SZWB-100-0NC](#) [1-5-3437](#)