

3M™ Textool™ Burn-In Grid ZIP Sockets

Pin Grid Arrays



- Lever actuated zero insertion force mechanism
- Rugged 3-plate construction for durability and electrical reliability
- Available in 10 × 10 through 25 × 25 matrices
- PTFE coated stainless steel handle - durable and safe in high humidity environments
- Optical locating holes for robotics loading/unloading
- Repairable - contacts, handles, top-plate, and cam plate are replaceable

Date Modified: November 8, 2004

TS-0358-16
Sheet 1 of 4

Physical

Insulation

Material: Polyethersulfone (PES)
Flammability: UL 94V-0
Color: Black PES

Marking: Part Number Identifier and Logo on All

Cam Handle

Material: Stainless Steel

Contact

Material: Beryllium Copper
Plating: 30μ" (0.76 μm) Gold over 50μ" (1.3 μm) Nickel

Electrical

Current Rating: 1 Amp
Insulation Resistance: $> 1 \times 10^{12}$ at 500 Vdc
Withstanding Voltage: 1000 Vrms at sea level

Environmental

Operating Temperature Rating: -55°C to +150°C

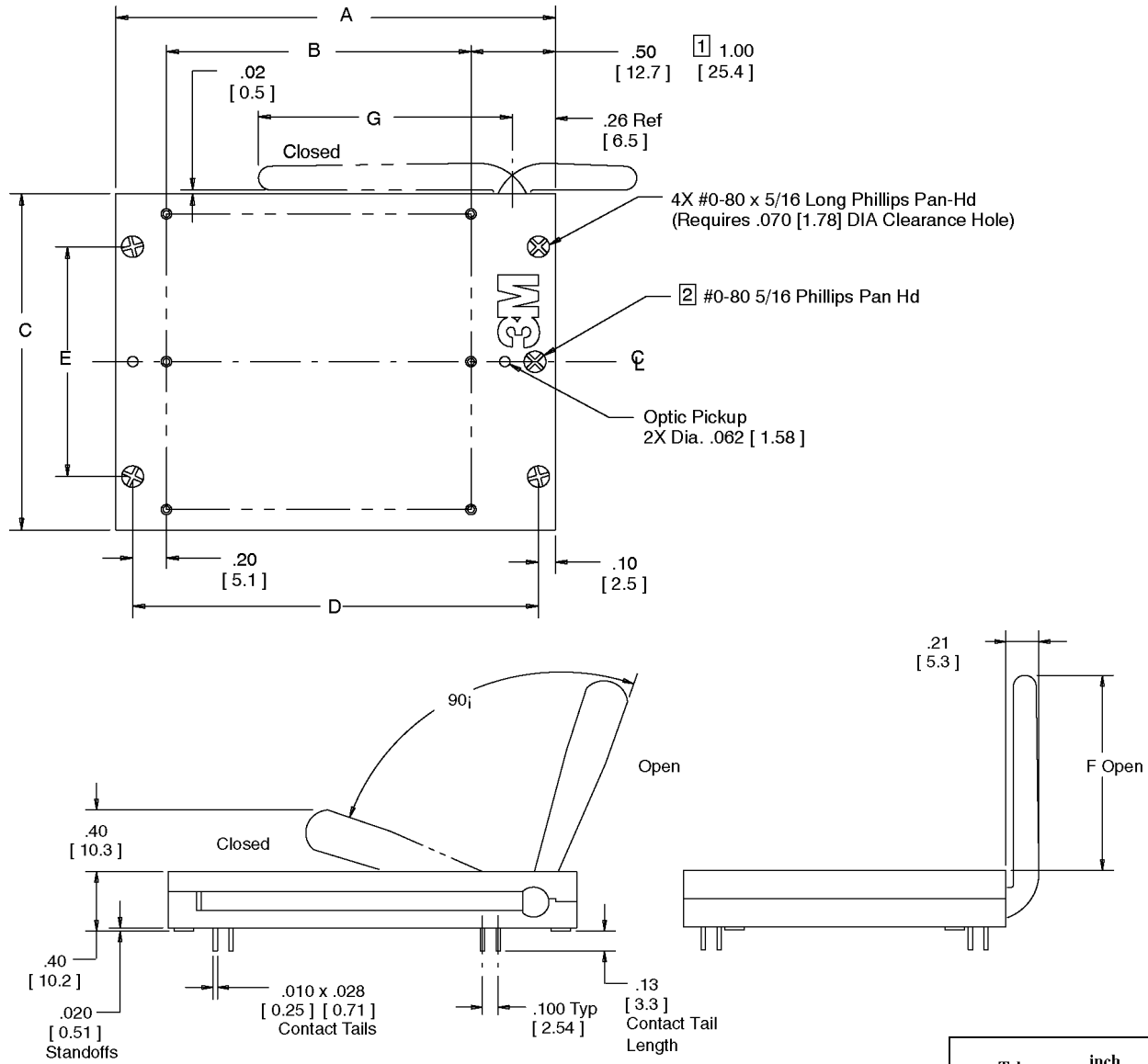
Mechanical

PES/BeCu A. When used as a test socket at room temperature 24°C the socket will last 25,000 actuations.
B. Based on field experience, under normal burn-in conditions up to a maximum of 150°C for PES, the socket should last an average of 4 years.

Textool is a trademark of 3M Company.

3M™ Textool™ Burn-In Grid ZIP Sockets

Pin Grid Arrays



	Tolerance	
	inch	mm
Dimension	.00 [.0]	.000 [.00]
Tolerance	±.010 [±.25]	±.005 [±.13]

Notes:

- 1 25 x 25 only.
- 2 Present only on 15 x 15 and larger

Ordering Information

2XXX - 63XX - XXX - 1902

Number of Contacts

- 6310-10x10
- 6311-11x11
- 6313-13x13
- 6315-15x15
- 6317-17x17
- 6319-19x19
- 6321-21x21
- 6324-25x25

Plating PES:
1902 with /30µ" Au/Ni on BeCu

0UA = Molded Pattern
9UA = All holes open

TS-0358-16
Sheet 2 of 4

Note: Additional ten hole plugs can be ordered separately, part #200-4660-14-1900

3M™ Textool™ Burn-In Grid ZIP Sockets

Pin Grid Arrays

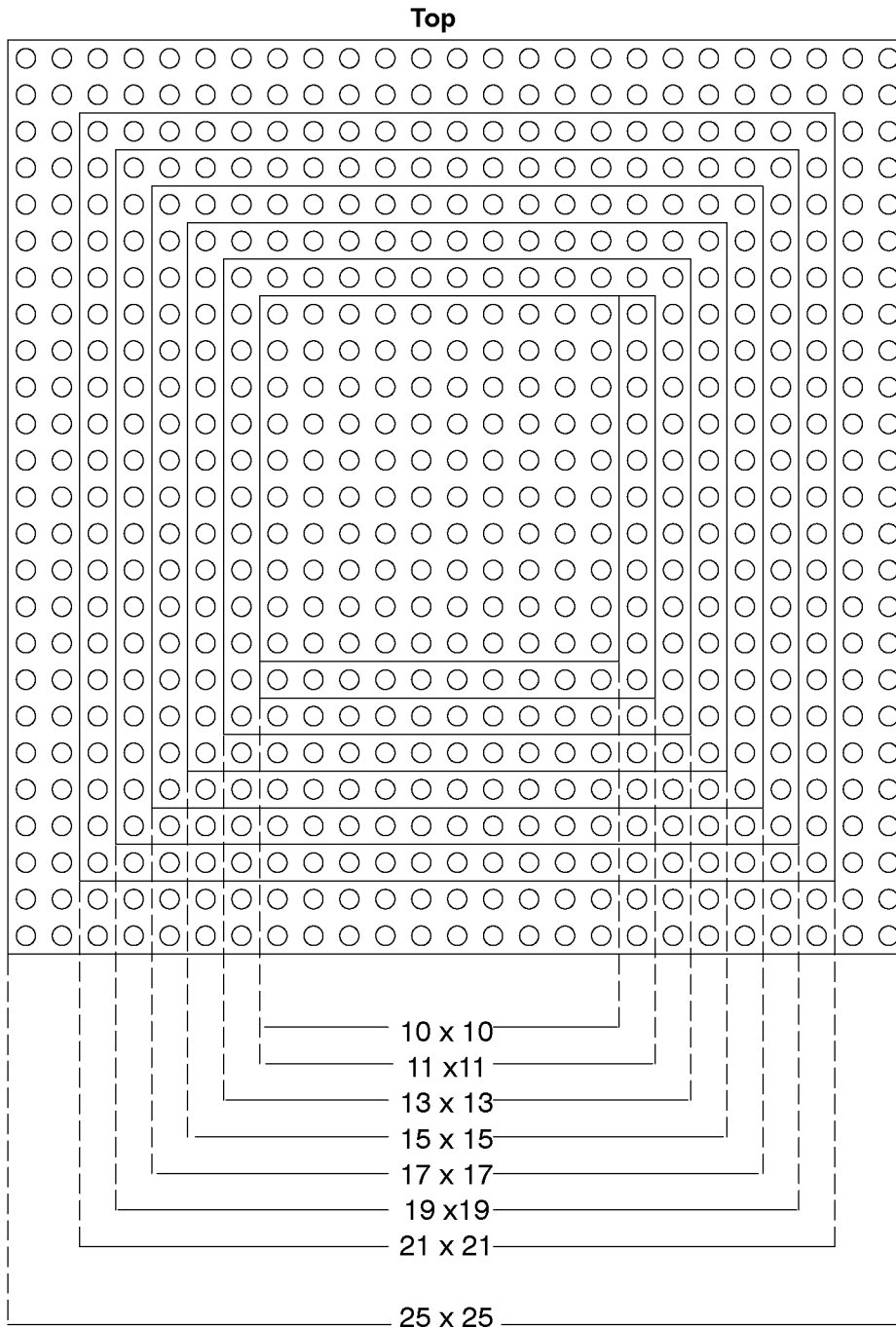
Grid Matrix	Maximum Contact Quantity	Dimensions						
		A	B	C	D	E	F	G
10 x 10	100	1.70 [43.2]	.90 [22.9]	1.15 [29.2]	1.50 [38.1]	.90 [22.9]	.80 [20.3]	.80 [20.3]
11 x 11	121	1.80 [45.7]	1.00 [25.4]	1.25 [31.8]	1.60 [40.6]	1.00 [25.4]	.80 [20.3]	.80 [20.3]
13 x 13	169	2.00 [50.8]	1.20 [31.8]	1.45 [36.8]	1.80 [45.7]	1.00 [25.4]	.80 [20.3]	.80 [20.3]
15 x 15	225	2.20 [55.9]	1.40 [35.6]	1.65 [41.9]	2.00 [50.8]	1.20 [30.5]	1.30 [33.0]	1.40 [35.6]
17 x 17	289	2.40 [61.0]	1.60 [40.6]	1.85 [47.0]	2.20 [55.9]	1.20 [30.5]	1.30 [33.0]	1.40 [35.6]
19 x 19	361	2.60 [66.0]	1.80 [45.7]	2.05 [52.1]	2.40 [61.0]	1.40 [35.6]	1.70 [43.2]	1.80 [45.7]
21 x 21	441	2.80 [71.1]	2.00 [50.8]	2.25 [57.2]	2.60 [66.0]	1.40 [35.6]	1.70 [43.2]	1.80 [45.7]
25 x 25	625	3.70 [94.0]	2.40 [61.0]	2.65 [67.3]	3.50 [88.9]	2.00 [50.8]	2.58 [65.5]	2.78 [70.6]

Tolerance $\frac{\text{inch}}{[\text{mm}]}$		
Dimension	$\frac{.00}{[.0]}$	$\frac{.000}{[.00]}$
Tolerance	$\frac{\pm .010}{[\pm .25]}$	$\frac{\pm .005}{[\pm .13]}$

TS-0358-16
Sheet 3 of 4

3M™ Textool™ Burn-In Grid ZIP Sockets

Pin Grid Arrays



Tolerance		
	inch	mm
Dimension	.00 [.0]	.000 [.00]
Tolerance	± .010 [± .25]	± .005 [± .13]

Handle Side

Mark Indications:

- X No holes, no contacts
- Holes only, no contacts
- Holes with contacts

Front

Notes:

1. This is only a work sheet. Do not proceed with any layout until a part number is assigned by 3M. The pattern is subject to repositioning.
2. Lead diameter = .022 [0.56] max, .014 [0.36] min. The standard socket has been designed to accept these lead diameters only. For all others please consult the factory.
3. Use this sheet to indicate which positions you intend to use.
4. Remember: for best results, keep your patterns as symmetrical with the centerline as possible.
5. The contact point for all sizes is .085 [2.16] below the top surface and we recommend a device lead length of .100 [2.54] below the solder standoffs.

TS-0358-16
Sheet 4 of 4

Important Notice

All statements, technical information, and recommendations related to 3M's products are based on information believed to be reliable, but the accuracy or completeness is not guaranteed. Before using this product, you must evaluate it and determine if it is suitable for your intended application. You assume all risks and liability associated with such use. Any statements related to the product which are not contained in 3M's current publications, or any contrary statements contained on your purchase order shall have no force or effect unless expressly agreed upon, in writing, by an authorized officer of 3M.

Warranty; Limited Remedy; Limited Liability.

This product will be free from defects in material and manufacture for a period of 1 year from the time of purchase. **3M MAKES NO OTHER WARRANTIES INCLUDING, BUT NOT LIMITED TO, ANY IMPLIED WARRANTY OF MERCHANTABILITY OR FITNESS FOR A PARTICULAR PURPOSE.** If this product is defective within the warranty period stated above, your exclusive remedy shall be, at 3M's option, to replace or repair the 3M product or refund the purchase price of the 3M product. **Except where prohibited by law, 3M will not be liable for any indirect, special, incidental or consequential loss or damage arising from this 3M product, regardless of the legal theory asserted.**

3M

Electronic Solutions Division

6801 River Place Blvd.
Austin, TX 78726-9000
www.3M.com/esd



Minimum 10%
Post-consumer Fiber

Printed in USA.

© 3M 2004

X-ON Electronics

Largest Supplier of Electrical and Electronic Components

Click to view similar products for [IC & Component Sockets](#) category:

Click to view products by [3M](#) manufacturer:

Other Similar products are found below :

[0066-3-17-15-30-14-02-0](#) [670](#) [672](#) [673](#) [712-93-120-41-001000](#) [714-93-104-31-018000](#) [8059-4G1-LF](#) [807-22-001-10-001101](#) [807-22-001-10-006101](#) [807-22-001-30-011101](#) [807-22-001-30-012101](#) [807-22-001-30-013101](#) [807-22-001-30-014101](#) [8-1437531-4](#) [8150-6P10](#) [833-93-034-10-001000](#) [851-41-006-10-001000](#) [851-43-008-20-001000](#) [851-43-014-20-001000](#) [851-93-006-20-001000](#) [851-93-010-20-001000](#) [853-43-020-10-001000](#) [86.010.0053.0](#) [116-43-308-41-007000](#) [PX-68LCC](#) [121-13-318-41-001000](#) [121-13-320-41-001000](#) [121-13-308-41-001000](#) [123-43-314-41-801000](#) [123-43-420-41-001000](#) [123-87-320-41-001101](#) [122-13-316-41-001000](#) [123-13-624-41-001000](#) [123-43-306-41-001000](#) [12-3513-11](#) [123-91-320-41-001000](#) [126-43-310-41-002000](#) [AKSUN 37V-T](#) [1437503-9](#) [1437504-1](#) [146-44-308-41-013000](#) [APO-320-G-T](#) [146-43-308-41-012000](#) [160-10-308-00-001000](#) [160-40-320-00-001000](#) [214-99-306-01-670800](#) [232-1270-02-0602](#) [2-382761-4](#) [2-5331677-4](#) [2-640360-3](#)