

7.2 3M™ Couplings / Connectors / Pigtails



Description

3M SC-Connectivity

SC connectivity still is the master of choice for the majority of FTTH network concepts. The proven reliability and broad availability gives every network consultant the security and planning safety without any need for approval tests.

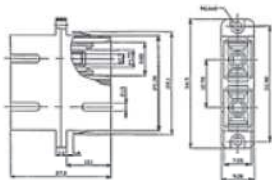
3M offers a variety of SC products, as SC/NPC connectors, SC pigtails, patch cords and couplings for PC and APC endface technology.

Ordering Information

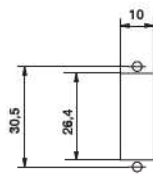
3M SC Couplings / Pigtails



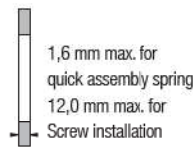
	Ref. No.
> SC Duplex Coupling, multimode Plastic housing, grey, mounting bracket included, PU: 60 pcs	6313
> SC Duplex Coupling, single-mode Plastic housing, blue, mounting bracket included, PU: 60 pcs	8313
> SC Coupling, multimode Simplex, grey, mounting springs included, PU: 60 pcs	6310
> SC Coupling, single-mode Simplex, blue, mounting springs included, PU: 60 pcs	8310-E
> SC/APC Coupling, single-mode Simplex, green, mounting springs included, PU: 60 pcs	8310-GE



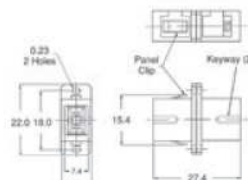
SC duplex coupling



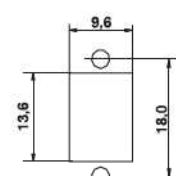
Hole pattern



Sheet thickness



SC duplex coupling



Hole pattern

Coupling/Connector type	6313	8313	6310	8310-E	8310-GE
Type	Multimode	Single-mode	Multimode	Single-mode	Single-mode
Simplex/Duplex	for duplex	for duplex	simplex	simplex	simplex
Sleeve	Phosphor bronze	Zirconia ceramic	Zirconia ceramic	Zirconia ceramic	Zirconia ceramic
Housing	Plastic, gray	Plastic, blue	Plastic, gray	Plastic, blue	Plastic, green
Operating temp.	-40°C to 75°C	-40°C to 85°C	-40°C to 85°C	-40°C to 85°C	-40°C to 85°C

X-ON Electronics

Largest Supplier of Electrical and Electronic Components

Click to view similar products for [3m manufacturer](#):

Other Similar products are found below :

[SC401U](#) [98-0003-3071-6](#) [80-0012-6467-2](#) [00-054007-70220-7](#) [00-054007-34717-0](#) [021200-40230](#) [6840-2X50-GRAY](#) [701-W](#) [7993MP-2CIRCLE-100](#) [FDV14-187C](#) [8124/14](#) [812510-100](#) [8125/17](#) [813216](#) [8204-3LFM](#) [8425-8](#) [MNG14BCX](#) [FP301-1-6"-Clear](#) [FV14-6C](#) [920102-01-25-R](#) [927739-40](#) [929835-01-28-RK](#) [929836-09-16](#) [929974-01-40-R](#) [951240-2520-AR-PR](#) [960X/980X](#) [98-0003-3075-7](#) [HF36564-100](#) [HF625/26-30](#) [1/2-5-5430](#) [1/2-5-850S](#) [1/2-5-3431](#) [12X12-6-4056B](#) [12X12-6-433](#) [12X12-6-4930](#) [13-500-NB](#) [14526-EZ5B-300-02C](#) [1-4-4658F](#) [14520-EZAB-300-0EC](#) [DSTK9013-3420](#) [DSTK9015-3402](#) [14T26-SZLB-200-0LC](#) [14T50-SZWB-100-0NC](#) [1-5-3437](#) [1-5-4496W](#) [1-5-4943F](#) [1-5-363](#) [1-5-5451](#) [1-5-421](#) [158250-0120](#)