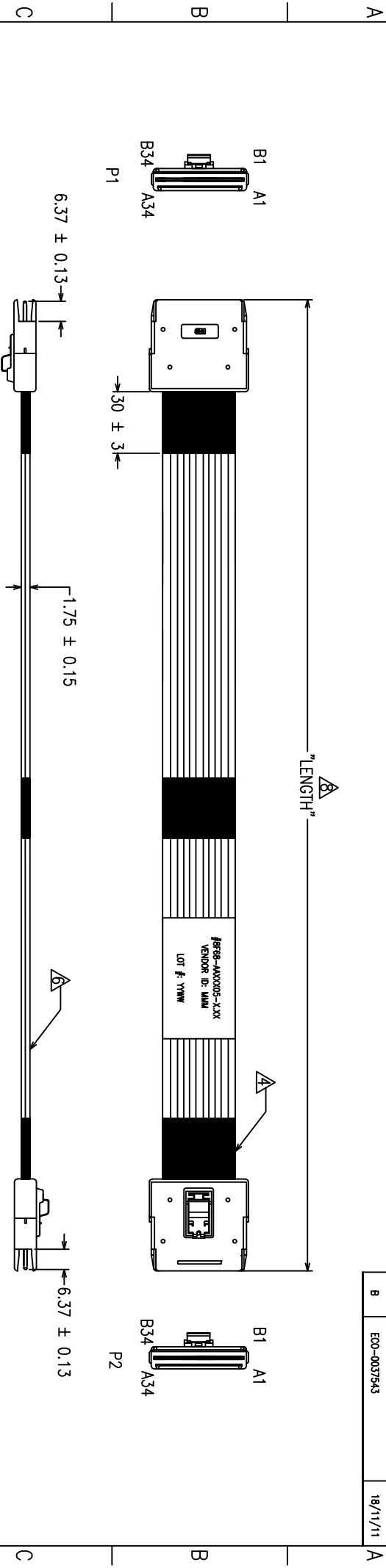


3M™ HIGH ROUTABILITY INTERNAL MINISAS CABLE ASSEMBLY, 8F68 SERIES

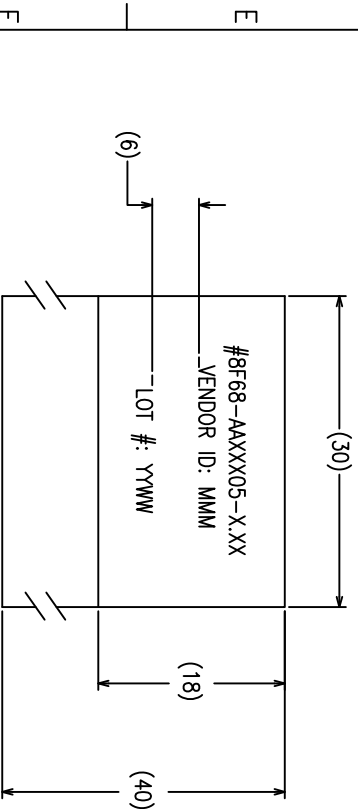
REVISION RECORD		
REV.	ECR/ECN/ECO NUMBER	DATE
A	ECO-0037298	04/11/11
B	ECO-0037543	18/11/11



8 F 68 - AA X X 05 - X.XX

CABLE USED
 PINOUT (SEE PINOUTS ON SHEET 2)
 LENGTH IN METERS

G : 4-LANE WITH SIDEBANDS, SN-PLATED SIGNAL, CABLE P/N SL8801/12-21DA5-00
 J : 4-LANE WITH SIDEBANDS, AG-PLATED SIGNAL, CABLE P/N SL8801/12-20DA5-00
 * FOR CABLES WITHOUT SIDEBANDS OR OTHER CONFIGURATIONS, PLEASE CONTACT A 3M REPRESENTATIVE.



Visit <http://www.3Mconnector.com>

UNIT: MM	DFG	KOK HOE LEE	DATE	18/11/11	 3M INNOVATION CENTRE	DIVISION	ESD	STATUS	RELEASED		
GEN. TOLERANCES	CHKD	YUNLONG QIAO	DATE	18/11/11		MODEL					
LINEAR 0 = ±0.25 .00 = ±0.15 .000 = ±0.05	APPL	SAJIT BANDHU	DATE	18/11/11	TITLE	CABLE ASSEMBLY INTERNAL 68P MINISAS RIBBON TWINAX					
ANGLE ±1°	THIS DOCUMENT CONTAINS INFORMATION WHICH IS PROPRIETARY TO 3M. NO REPRODUCTION OR IN PART, SHALL BE MADE WITHOUT AUTHORIZATION FROM 3M.				SIZE	DRAWING NO.	78-5100-2450-4		REV	B	
PROJECTION	INTERPRET PER ASME Y14.5M-1994				SCALE	NTS		DET LST	<input type="checkbox"/> YES <input type="checkbox"/> NO	SHT	1 of 2
CRITICAL DIMENSION: ▲											

X-ON Electronics

Largest Supplier of Electrical and Electronic Components

Click to view similar products for [Computer Cables](#) category:

Click to view products by [3M](#) manufacturer:

Other Similar products are found below :

[68809-0004](#) [IB63](#) [CB-716EB-RS](#) [CB-716P8P9-RS](#) [CBK-11-290K-00](#) [ACL-10550](#) [ACL-10568-2](#) [ACL-10568-5](#) [427522400-3](#) [32102-021500-200-RS](#) [426091300-3](#) [48000023](#) [10114976-P015002LF](#) [88761-6101](#) [NT631C-CN321-EU](#) [ACL-10568NF-1](#) [MIKROE-2092](#) [PCL-101100R-2E](#) [1700009405](#) [PS/2 Cable](#) [NT31C-CN323-EU](#) [FWAX-PK1-51](#) [68801-1905](#) [111068-1015](#) [100436-1107](#) [68801-0630](#) [68801-3612](#) [68801-3618](#) [205058-1002](#) [PS2NK](#) [SATA cable](#) [96021-0000-00-0](#) [FAK-SMZSMZ 5M](#) [FAK-SMZSMZ-3M](#) [ACC-500-200-R](#) [iW-C40-PCIe08-C1](#) [1700001531](#) [96048-0000-00-0](#) [SATA III cable 30cm, down/straight](#) [cab-Pico-ITX-LVDS](#) [PCL-101100SB-2E](#) [AXXSTCBLQAT](#) [NT31C-KBA05](#) [PCL-101100M-2E](#) [A2U4PSWCXCXK1](#) [2 port SATA to 5 pin,L=200mm](#) [ACL-10568NF-2](#) [C-PS2WG/5](#) [C-PS2WW/2](#) [C-PS2WW/3](#)