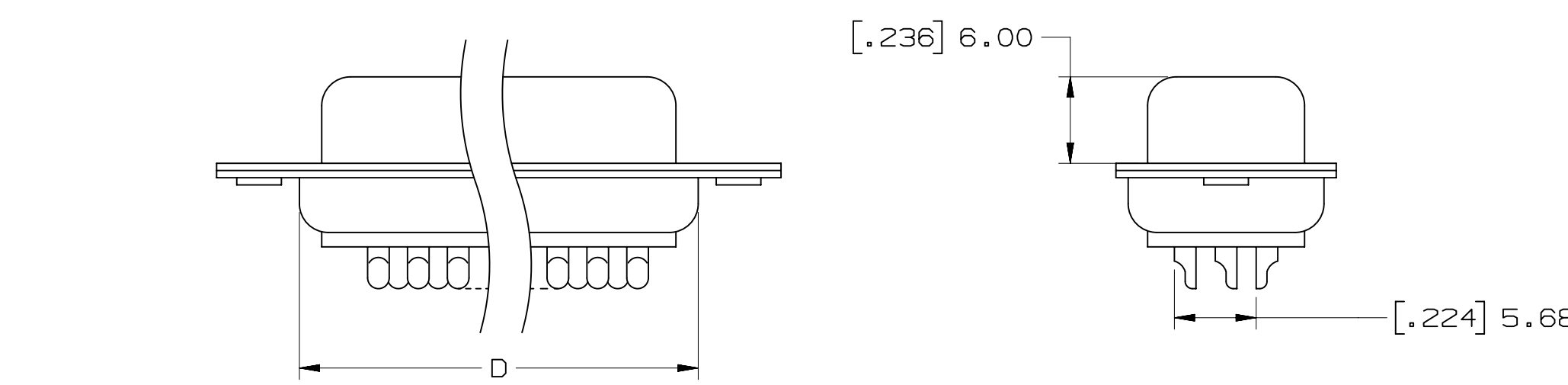
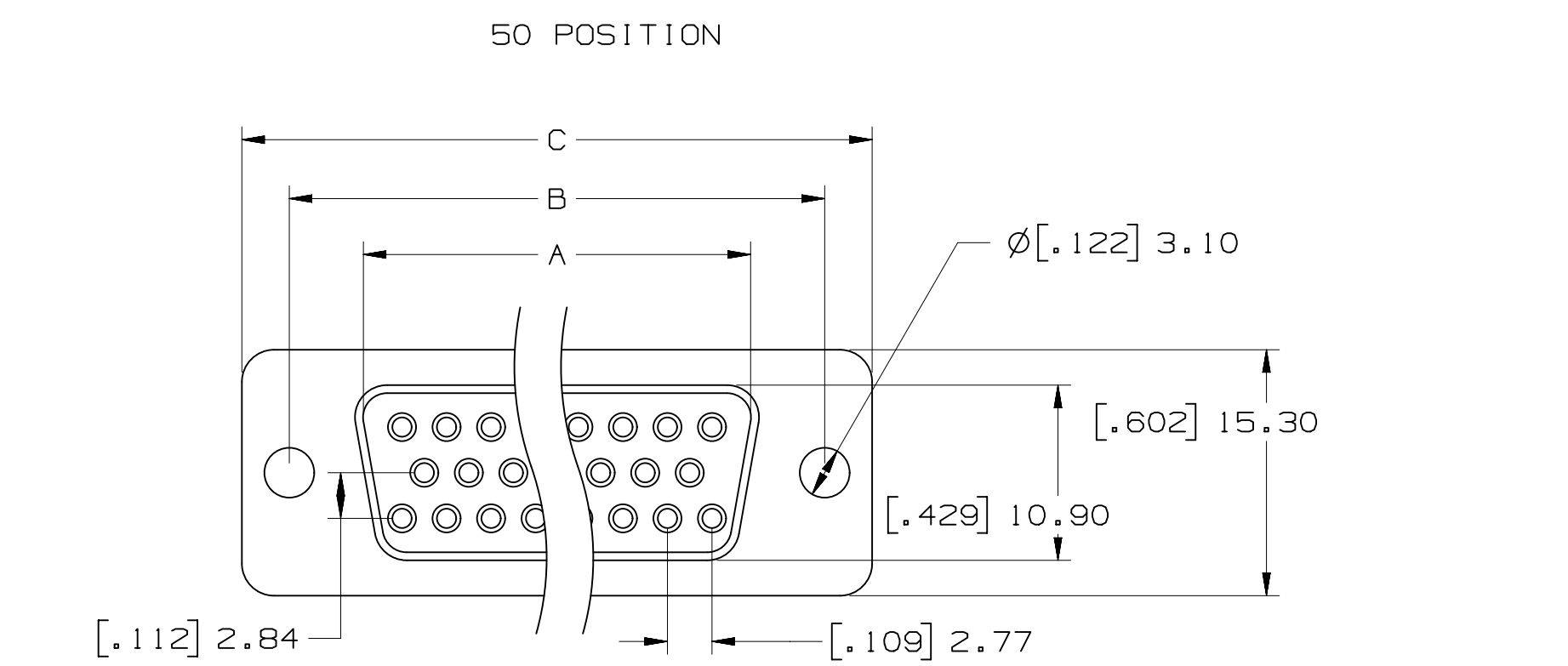
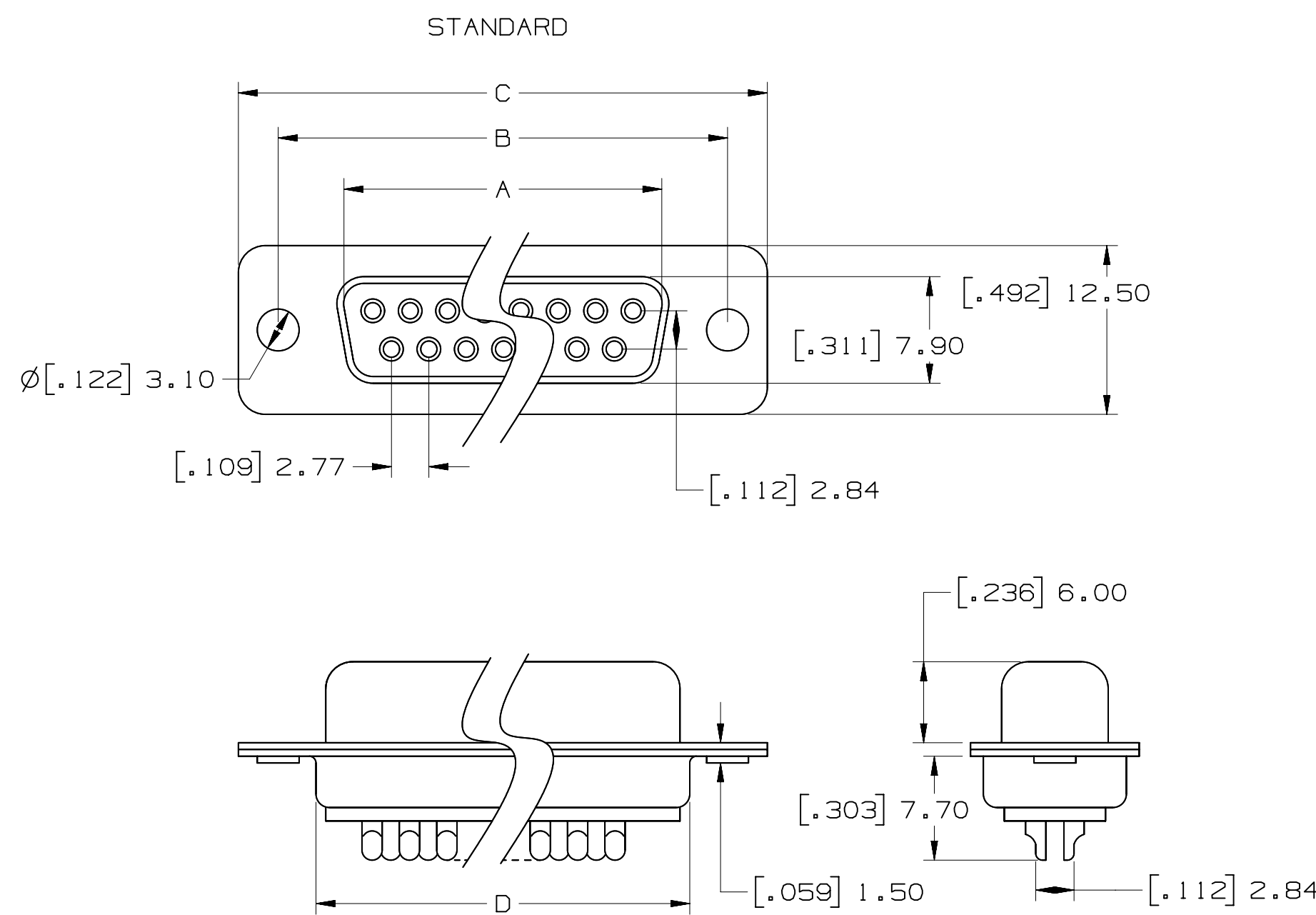


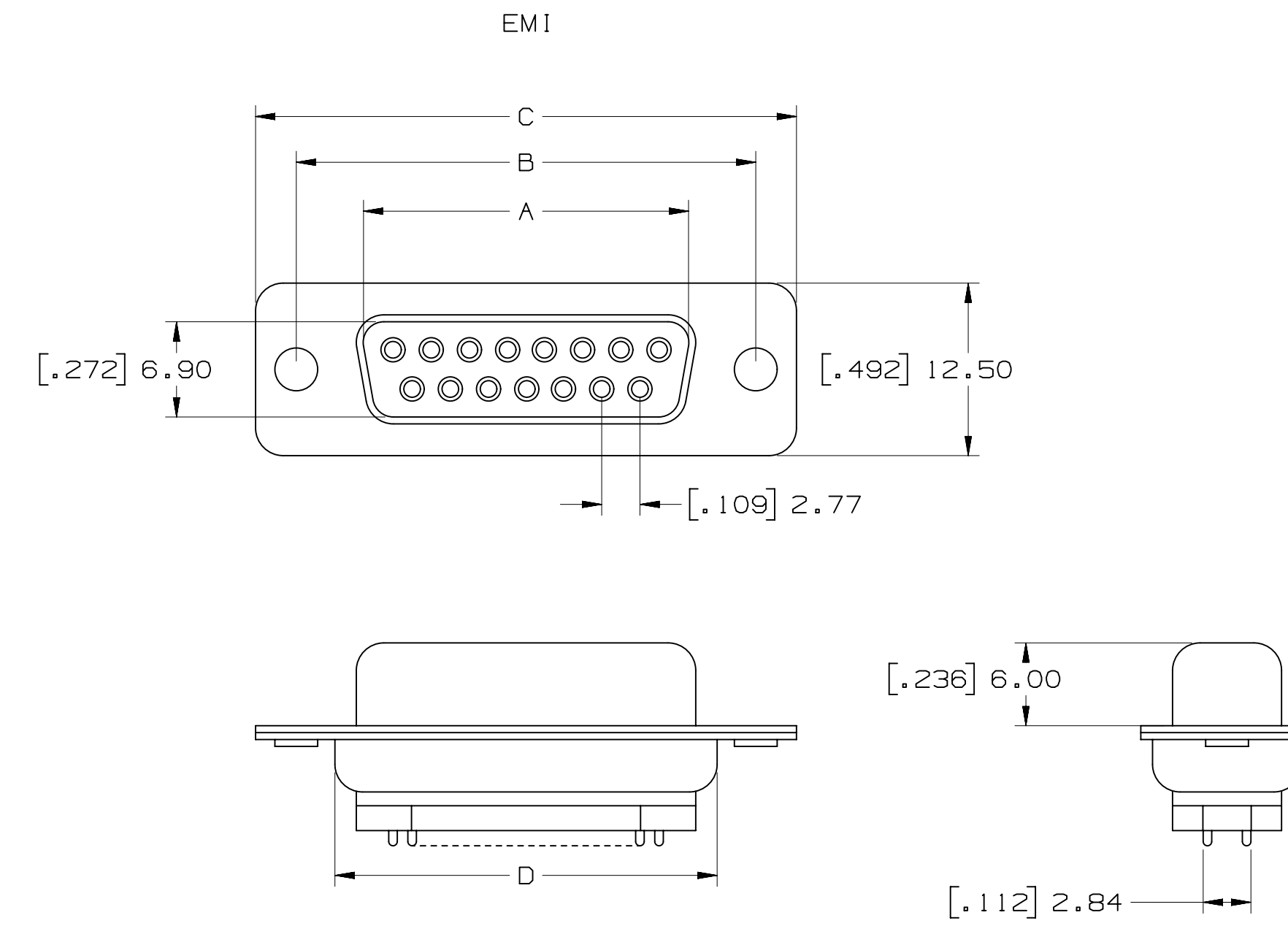
3M™ Solder Cup D Sub Socket, 8000 Series



POSITION	A	B	C	D
9	[.642] 16.30	[.984] 25.00	[1.213] 30.80	[.756] 19.20
15	[.969] 24.60	[1.311] 33.30	[1.543] 39.20	[1.091] 27.70
25	[1.508] 38.30	[2.248] 57.10	[2.091] 53.10	[1.618] 41.10
37	[2.157] 54.80	[2.500] 63.50	[2.732] 69.40	[2.256] 57.30
50*	[2.055] 52.20	[2.402] 61.00	[2.638] 67.00	[2.169] 55.10

\*50 POSITION AVAILABLE IN STANDARD ONLY

PERFORMANCE	
OPERATION VOLTAGE:	250V MAX.
CURRENT:	3A MAX.
INSULATION RESISTANCE:	3000 MOhm MIN @ 500VDC
WITHSTANDING VOLTAGE:	1000 VAC / MIN.
TEMPERATURE RATING:	-55°C to 105°C
CONTACT RESISTANCE:	15 mOhms MAX.



8RXX - X00X

NUMBER OF CONTACTS (SEE TABLE)

PLATING  
1 - AU FLASH  
2 - 30μ" AU

EMI  
N - STANDARD  
E - EMI

NOTES

- MATERIAL:  
THERMAL PLASTIC UL94V-0  
CONTACTS:  
COPPER ALLOY  
SHELL:  
G3141 SPCC OR EQUIVALENT
- PLATING:  
50μ" NICKEL UNDERPLATE  
1μ" AU WIPING AREA OR  
30μ" AU WIPING AREA  
100-200μ" TIN (BRIGHT TIN) SOLDER TAIL
- MATES WITH:  
BPXX-X00X
- SEE THE REGULATORY INFORMATION APPENDIX (RIA) IN "ROHS" COMPLIANCE SECTION OF WWW.3MCONNECTOR.COM FOR COMPLIANCE INFORMATION (RIA E1 & C1 APPLY)

3M ELECTRONIC SOLUTIONS DIVISION  
INTERCONNECT SOLUTIONS  
http://www.3mconnectors.com

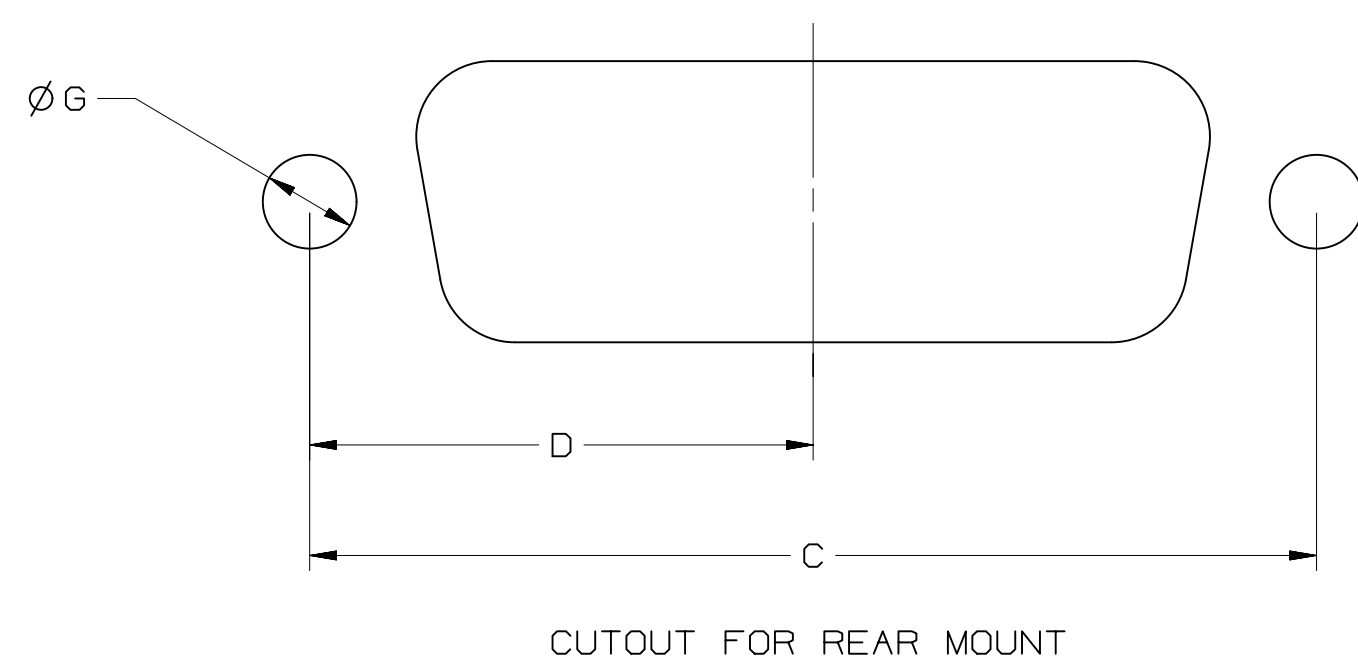
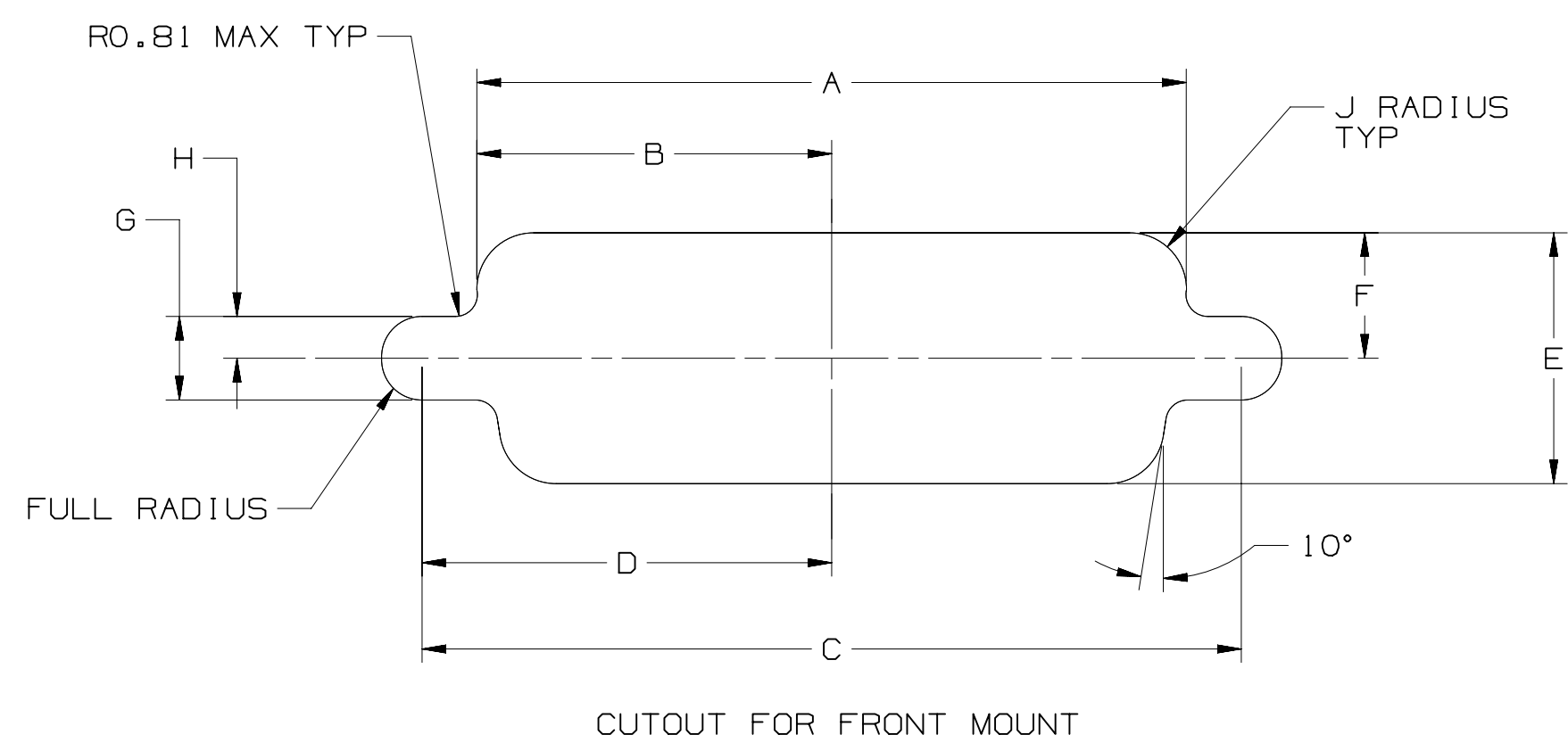
3M IS A TRADEMARK OF 3M COMPANY.  
FOR TECHNICAL, SALES OR ORDERING  
INFORMATION, CALL 800-225-5373

Unless otherwise noted, references to industry specifications are intended to indicate substantial compliance to the material elements of the specification. Such references should not be construed as a guarantee of compliance to all requirements in a given specification.

DESIGN REFERENCE	NEXT ASSEMBLY	REV	ECO	ISSUE DATE AND DESCRIPTION	DRFT	CHKD
		SJS		MAY 18, 2011		
		ARM		MAY 18, 2011		
DIVISION	DIVISION CODE	© 3M COPYRIGHT 2013				
DO NOT SCALE DRAWING	SCALE 1/1	TOLERANCES EXCEPT AS NOTED				
THIRD ANGLE PROJECTION		INCHES +.00 .000 ± 2000 ±				
		MILLIMETERS 0 ±.1 .0 ±.05 .000 ±.005				
MAX SURFACE ROUGHNESS		CAGE NUMBER				
125		D 78-5100-2402-5				
		MODEL				
		BR				

78-5100-2402-5

POSITION	MOUNTING METHOD	A	B	C	D	E	F	G	H	J
9	FRONT	.874( 22.2 )	.437( 11.1 )	.984( 25.0 )	.492( 12.5 )	.513( 13.0 )	.257( 6.5 )	.120( 3.1 )	.060( 1.5 )	.083( 2.1 )
	REAR	.806( 20.5 )	.403( 10.2 )	.984( 25.0 )	.492( 12.5 )	.449( 11.4 )	.225( 5.7 )	.120( 3.1 )	.060( 1.5 )	.132( 3.4 )
15	FRONT	1.202( 30.5 )	.601( 15.3 )	1.312( 33.3 )	.656( 16.7 )	.513( 13.0 )	.257( 6.5 )	.120( 3.1 )	.060( 1.5 )	.083( 2.1 )
	REAR	1.134( 28.8 )	.567( 14.4 )	1.312( 33.3 )	.656( 16.7 )	.449( 11.4 )	.225( 5.7 )	.120( 3.1 )	.060( 1.5 )	.132( 3.4 )
25	FRONT	1.743( 44.3 )	.872( 22.2 )	1.852( 47.0 )	.926( 23.5 )	.513( 13.0 )	.257( 6.5 )	.120( 3.1 )	.060( 1.5 )	.083( 2.1 )
	REAR	1.674( 42.5 )	.837( 21.3 )	1.852( 47.0 )	.926( 23.5 )	.449( 11.4 )	.225( 5.7 )	.120( 3.1 )	.060( 1.5 )	.132( 3.4 )
37	FRONT	2.391( 60.7 )	1.196( 30.4 )	2.500( 63.5 )	1.250( 31.8 )	.513( 13.0 )	.257( 6.5 )	.120( 3.1 )	.060( 1.5 )	.083( 2.1 )
	REAR	2.326( 59.1 )	1.163( 29.5 )	2.500( 63.5 )	1.250( 31.8 )	.449( 11.4 )	.225( 5.7 )	.120( 3.1 )	.060( 1.5 )	.132( 3.4 )
50	FRONT	2.297( 58.3 )	1.149( 29.2 )	2.406( 61.1 )	1.203( 30.6 )	.623( 15.8 )	.312( 7.9 )	.120( 3.1 )	.060( 1.5 )	.083( 2.1 )
	REAR	2.218( 56.3 )	1.109( 28.2 )	2.406( 61.1 )	1.203( 30.6 )	.555( 14.1 )	.278( 7.1 )	.120( 3.1 )	.060( 1.5 )	.132( 3.4 )



REV	ECO	ISSUE DATE AND DESCRIPTION	DRFT	CHKD
C	46292	MAR 28, 2013 CORRECT SHELL MATL	SJS	ARM
B	34516	AUG 29, 2011 CHANGE MOHMS TO mOHMS, UPDATE ROHS	SJS	ARM
A	34511	MAY 18, 2011 MAY 18, 2011	SJS	ARM

DESIGN REFERENCE	NEXT ASSEMBLY	REV	ECO	ISSUE DATE AND DESCRIPTION	DRFT	CHKD
		SJS		MAY 18, 2011		
		ARM		MAY 18, 2011		
DIVISION	DIVISION CODE	© 3M COPYR[IGHT] 2013 This document and the information it contains are 3M property and may not be reproduced or further distributed without 3M permission, or used or disclosed other than for 3M authorized purposes. All rights reserved.				
DO NOT SCALE DRAWING	SCALE 1/1	<b>3M</b> Center St. Paul, MN 55144				
THIRD ANGLE PROJECTION	TOLERANCES EXCEPT AS NOTED	INCHES .00 ± .000 ± .0000 ±				
INTERPRET PER ASME Y14.5 - 1994	MILLIMETERS	0 ± 1 .0 ± .5 .00 ± .05 .000 ± .005				
MAX SURFACE ROUGHNESS 125	ALL SURFACES MARKED ONLY	ANGLES ± 1°				
TITLE		8RXX-X00X D-SUB SOLDER CUP SOCKET TS-2402				
CAGE NUMBER	SIZE	DRAWING NO.	REV.			
D		78-5100-2402-5	C			
MODEL	BR	DET	ISTS	YES	NO	SHT 2 OF 2

## X-ON Electronics

Largest Supplier of Electrical and Electronic Components

*Click to view similar products for [D-Sub Standard Connectors](#) category:*

*Click to view products by [3M](#) manufacturer:*

Other Similar products are found below :

[56F706-005-LI](#) [56F711-015](#) [012-9507-004](#) [LV242999-142T12](#) [015-0341-000](#) [015-0372-005](#) [015-0372-008](#) [015-8755-001](#) [020419-0104](#)  
[012-0467-000](#) [012-0515-000](#) [012-9507-034](#) [012-9507-114](#) [020745-0008](#) [609-25P](#) [CT2-18-11PCAU](#) [CT6-10SL-3SC](#) [CT6-10SL-4SC](#) [CT6-](#)  
[14S-2SC](#) [CT6E14SA7SC](#) [CT6M20-19SS](#) [CT6N10SL-4SSA34](#) [M83513/01-FC](#) [M83723/76W24619 L/C](#) [M85049/48-3-2F](#)  
[6STD09PCM99B70X](#) [6STD09SCM99B30X](#) [6STD09SCT99S40X](#) [6STD15PCT99S40X](#) [6STD15SCT99S40X](#) [6STF09PCM05B70X](#) [7-](#)  
[135760-9](#) [MC11E-10-6SN](#) [747552-3](#) [MD1-21PS](#) [MDM-15SCBRM7-F222](#) [MDM96517-699](#) [MDM96521-744](#) [MDVB1-21SL1](#) [MIK0-1-](#)  
[7SH003](#) [MIKQ6-7SH076](#) [MIKQ7-7PH077](#) [MIKQ7-7PH11](#) [MIKQ7-7PH32](#) [MKJ4A1F14-55S](#) [8-135760-3](#) [8STD09PCM99B30X](#) [PG-](#)  
[KV/PV-16-GROM-SEALING](#) [GDA15P](#) [GDAY15PB](#)