

3M™ Laminating Adhesive 360

Electronics, transportation, appliances, medical devices, and more



Strong performance with quick, sure stick
across a broad range of HSE and LSE substrates



Go to thin bondlines...quick, easy attaching of hard-to-bond

3M™ Laminating Adhesive 360 – bond, seal, and resist with 2-5 mils of real power

Don't let size deceive you. With a thin 2-mil or 5-mil transfer tape or thin 2-mil or 4-mil double-coated tape using 3M™ Laminating Adhesive 360, shear and peel strengths are equal or greater than other thicker tapes. And for the many OEMs designing thinner products using lighter weight materials, there's even more:

- Quick stick for fast, secure assembly with a range of HSE and LSE materials including glass, ABS, and hard-to-bond PP, HDPE, LDPE, Nylon and powder coated or UV painted surfaces
- Resistance up to 350°F (177°C), and to different solvents, and harsh environments
- Low odor

Converter friendly for high speed productivity

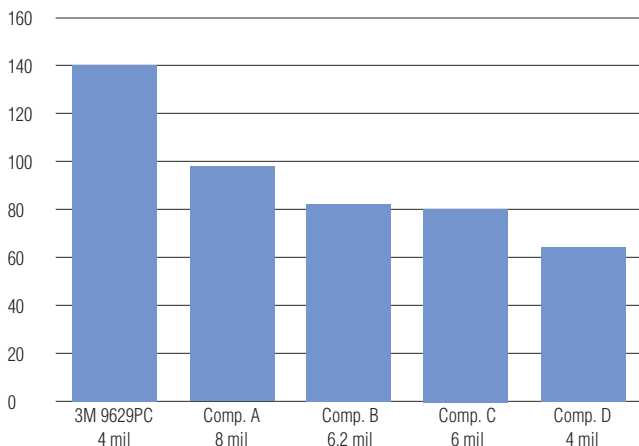
Little or no oozing helps solve three time-wasting production problems:

- Adhesive “picking” during unwind
- Adhesive residue on cutting blades
- Adhesive sticking to back of liner and/or the die-cut part surface



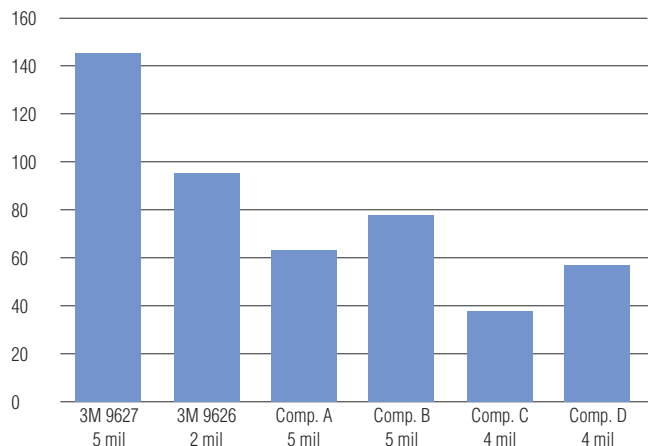
Double Coated Tapes

Peel Strength (oz/in) Polypropylene



Adhesive Transfer Tapes

Peel Strength (oz/in) Polypropylene



Note: This technical information and data should be considered representative or typical only and should not be used for specification purposes.

surfaces...strength to take the stresses in many applications

Electronics



Application ideas:

- Lens bonding
- Gasket attachment
- Plastic housing and component assembly
- Die-cut parts including LCD windows
- Decorative trim attachment

Relevant characteristics:

- Quick bonding of plastic components and specially texture painted surfaces
- High shear/peel strength for reduced adhesive ooze, slippage, and lifting
- Resists high temperatures up to 350°F (177°C) associated with transformers
- Thin for smooth appearance of thin plastic decorative trim

Appliance



Application ideas:

- Decorative trim attachment
- Die-cut parts including LCD windows
- Nameplates and rating plates for difficult-to-bond surfaces

Relevant characteristics:

- Quick bonding of HSE and LSE materials including powder coated paints
- High shear/peel strength for reduced adhesive ooze, slippage, and lifting
- Resists high temperatures up to 350°F (177°C) and typical household cleaners
- Thin for smooth appearance of instrument panel graphics

Transportation



Application ideas:

- Interior decorative trim attachment
- Die-cut parts for noise damping
- Plastic housing and component assembly

Relevant characteristics:

- Quick bonding of HSE and LSE materials from console to trunk and under the hood
- High shear/peel strength for reduced adhesive ooze, slippage, and lifting
- Thin for smooth appearance of instrument panel graphics

Medical Devices



Application ideas:

- Nameplates and rating plates for difficult-to-bond surfaces
- Lens bonding
- Gasket attachment
- Plastic housing and component assembly
- Die-cut parts including LCD windows

Relevant characteristics:

- Quick bonding of HSE and LSE materials
- High shear/peel strength for long-term durability
- Resists high temperatures up to 350°F (177°C)
- Thin for smooth appearance of control panels

Product Selection

Adhesive Family	Product	Format	Color	Tape Thickness*	Carrier	Liner	Liner Thickness (mils)	Master Size
Quick Stick Acrylic 360	9626	ATT	Clear	2 mil	-	Glassine	3.2	54" x 180 yds
	9627**	ATT	Clear	5 mil	-	Glassine	3.2	54" x 180 yds
	9628B**	DC	Black	2 mil	PET	Glassine	3.2	54" x 180 yds
	9628FL**	DC	Clear	2 mil	PET	PET film	2	54" x 180 yds
	9629PC	DC	Clear	4 mil	PET	PCK	4.2	54" x 180 yds
	9629FL	DC	Clear	4 mil	PET	PET film	2	54" x 180 yds
	9629B**	DC	Black	4 mil	PET	Glassine	3.2	54" x 180 yds

* Others available on request.

** Available in October 2009

Adhesive Family	Features
350	<ul style="list-style-type: none"> • Best in class for high temperature resistance 350°F (177°C) and shear strength • Excellent solvent resistance and for harsh environments • Best for challenging applications
360	<ul style="list-style-type: none"> • More strength with less adhesive • Quick stick properties to many LSE substrates • Lowest ooze • Low odor • Excellent convertability (die-cut)
300LSE	<ul style="list-style-type: none"> • Best in class for oily substrates • Thicker "Go To" tapes for LSE substrates • Good chemical and humidity resistance
300MP	<ul style="list-style-type: none"> • Multi-purpose use for many applications • Bonds very well to foam, fabrics and many plastics • Economical attachments of graphics

Note: This technical information and data should be considered representative or typical only and should not be used for specification purposes.

Product Use: Many factors beyond 3M's control and uniquely within user's knowledge and control can affect the use and performance of a 3M product in a particular application. Given the variety of factors that can affect the use and performance of a 3M product, user is solely responsible for evaluating the 3M product and determining whether it is fit for a particular purpose and suitable for user's method of application. **Warranty, Limited Remedy, and Disclaimer:** Unless an additional warranty is specifically stated on the applicable 3M product packaging or product literature, 3M warrants that each 3M product meets the applicable 3M product specification at the time 3M ships the product. 3M MAKES NO OTHER WARRANTIES OR CONDITIONS, EXPRESS OR IMPLIED, INCLUDING, BUT NOT LIMITED TO, ANY IMPLIED WARRANTY OR CONDITION OF MERCHANTABILITY OR FITNESS FOR A PARTICULAR PURPOSE OR ANY IMPLIED WARRANTY OR CONDITION ARISING OUT OF A COURSE OF DEALING, CUSTOM OR USAGE OF TRADE. If the 3M product does not conform to this warranty, then the sole and exclusive remedy is, at 3M's option, replacement of the 3M product or refund of the purchase price. **Limitation of Liability:** Except where prohibited by law, 3M will not be liable for any loss or damage arising from the 3M product, whether direct, indirect, special, incidental or consequential, regardless of the legal theory asserted, including warranty, contract, negligence or strict liability.



Converter Markets Industrial Adhesives and Tapes Division

3M Center, Building 225-3S-06
St. Paul, MN 55144-1000
800-223-7427
www.3M.com/converter

3M is a trademark of 3M Company.

Printed in U.S.A
© 3M 2009
70-0713-4540-2

X-ON Electronics

Largest Supplier of Electrical and Electronic Components

Click to view similar products for [Adhesive Tapes](#) category:

Click to view products by [3M](#) manufacturer:

Other Similar products are found below :

[56-YELLOW-34"X72YD](#) [021200-64630](#) [62-GRAY-12"X36YD](#) [764-1"x36yd-Red](#) [764-1"x36yd-White](#) [130C-1X15FT](#) [BDN11-3CB/A01](#)
[1900-48mm](#) [22-1/2X36YD](#) [88-SUPER-34X44FT](#) [890103N001](#) [2670](#) [9485PC 1"](#) [EVK-TA-TM047NBH01](#) [20-1"X60YDS](#) [2020-18mmx55m](#)
[H150](#) [363](#) [3900-Blue](#) [396-1"x36yd](#) [4016-34"x36yd](#) [4462-SN100](#) [4462W-12"x72yd](#) [4504-34x18](#) [5414 34X36](#) [4008-12"X36YD](#) [4104-](#)
[34"x18yd](#) [4466 1"](#) [4466W-1/2"x36yd](#) [4492B-1"x72yd](#) [4496W-12"x36yd](#) [4508-1"x36yd](#) [4516-3/8x36](#) [4726 1/2"X36YD](#) [054007-43154](#)
[054007-43152](#) [5414 1X36](#) [56 TAPE \(1/2"\)](#) [56-YELLOW-58"X72YD](#) [60-1/2"x36yd](#) [62-Gray-34x36yd](#) [687-758](#) [764-1"x36yd-Yellow](#) [766-](#)
[3"x36yd-YellowBlack](#) [EVK-TA-TM070RBH10](#) [88-SUPER-3/4X66FT](#) [177-982-9-P-1-.150](#) [3900-SILVER](#) [4718-12"x36yd](#) [926-14"x18yd](#)