

NOTES:

1. WEIGHT OF GLASS IN GRAMS: 2485±10%

HOUSING ORIENTED WITH LATCH DOWN

PINOUT	1	LL
	2	UL
	3	SHLD
	4	UR
	5	LR

UNITS [MM]
 INCHES [MM]
 3M TOUCH SYSTEMS
 METHUEN, MA
 USA
 © COPYRIGHT
 THIS DOCUMENT IS COPYRIGHTED PROPERTY OF THE
 3M COMPANY AND MAY NOT BE REPRODUCED
 WITHOUT 3M WRITTEN PERMISSION OR USED FOR
 PURPOSES OTHER THAN 3M AUTHORIZED
 PURPOSES.

THIRD ANGLE PROJECTION

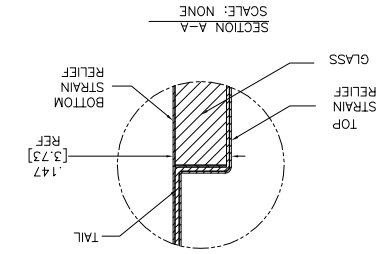
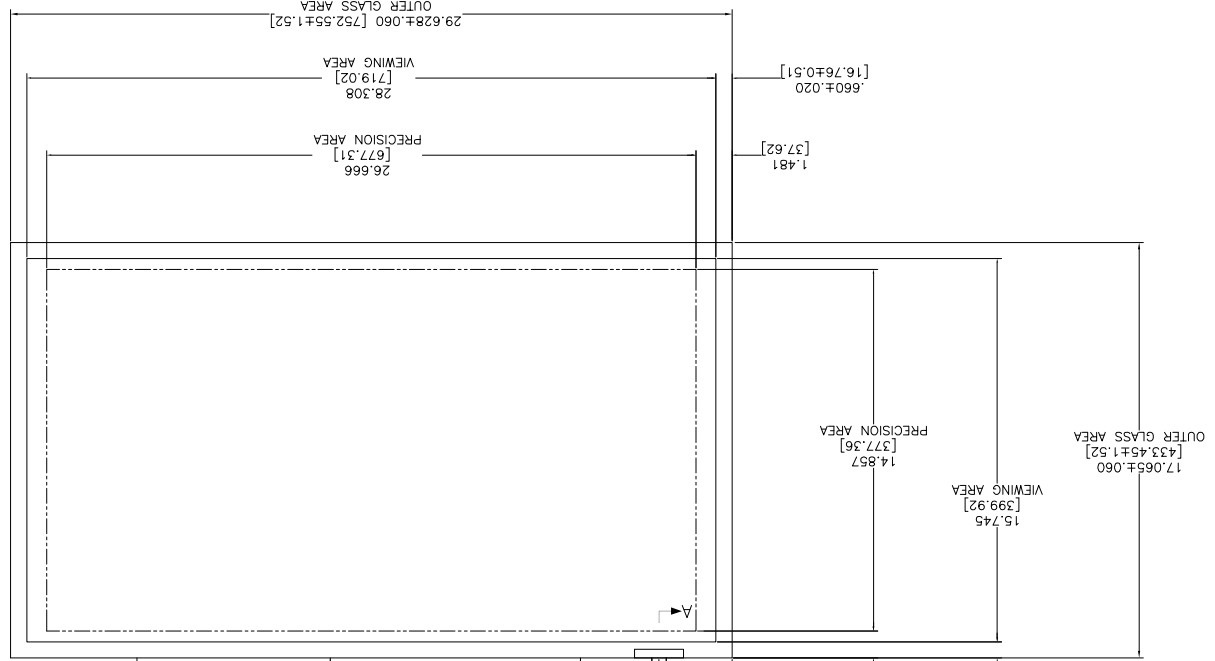
DO NOT SCALE DRAWING

SCALE 1 = 1

DRWN	AH	8/07
CAD FORMAT	AUTOCAD	1 OF 1
DOC NO.	TSD-34642	
REV	H	

MARKETING DRAWING
 SCT32NN 32.39" W

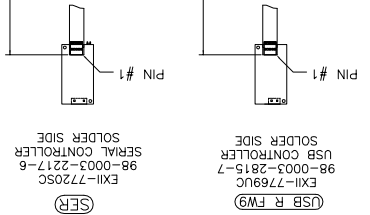
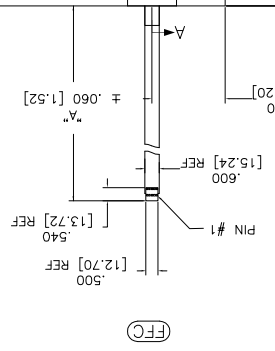
REV	H	REVERSE PER CO 036120	2/13
CHG	SB		



TOTAL THICKNESS
 OF GLASS, CABLE
 AND STRAIN RELIEF
 .147±.020 [3.73±.51]



ESD CLAMSHELL CASE
 IS USED WITH ALL NOV,
 USB AND SER
 TERMINATIONS.



TOP LEVEL NUMBER	US NUMBER	TYPE	DIM "A" (TOTAL GLASS TO CONNECTOR)	A/G FINISH	PROD SPEC
17-9121-205	98-0003-2693-8	FFC	8.00" [203.20]	AG500	23655
17-9121-226	98-0003-2962-7	USB R FW9	8.00" [203.20]	AG500	23655
17-9121-227	98-0003-2290-3	SER	8.00" [203.20]	AG500	23655
17-9121-227	98-0003-2290-3	SER	8.00" [203.20]	AG500	23655
N/A	98-1100-0127-2	USB R	8.00" [203.20]	AG500	23655

OCA DIAGONAL: 34.19	[868.45]
VA DIAGONAL: 32.39	[822.76]
PA DIAGONAL: 30.53	[775.34]

X-ON Electronics

Largest Supplier of Electrical and Electronic Components

Click to view similar products for [Capacitive Touch Sensors](#) category:

Click to view products by [3M](#) manufacturer:

Other Similar products are found below :

[CP8186AT](#) [LC717A10AJ-AH](#) [CP7709DT](#) [AT42QT1012-MAH](#) [FK 8-1](#) [SMBTASK3KIT6](#) [LC717A10AR-NH](#) [MCP2036T-I/MG](#) [CP3155T](#)
[QT113BISG](#) [CAP1166-1-CZC-TR](#) [CM12-08EBP-KW1](#) [CR12CN04DPO-E2](#) [CR30SCF10ATO](#) [CR30SCF10DPO](#) [BCS M30BBI2-PSC15D-](#)
[S04K](#) [CA30CAF16PAM1](#) [VC12RN230](#) [XT130B1FBL2](#) [FDC1004DGSR](#) [FDC1004DGST](#) [CR18SCF05DPO](#) [CR30CN15DPO-E2](#)
[VC12RT23010M](#) [CDWM3020ZPM](#) [17-8421-226](#) [VC12RN924](#) [AT42QT1050-MMH](#) [AT42QT1050-MMHR](#) [AT42QT1110-AU](#)
[AT42QT1244-AU](#) [AT42QT1244-AU](#) [AT42QT1481-AUR](#) [OTBA5L](#) [OTBVR81LQD](#) [PBCL22T](#) [SM31RDLBQD](#) [AT42QT1111-MU](#)
[AT42QT1244-MU](#) [AT42QT2100-MUR](#) [AT42QT2120-MMHR](#) [VTBN6LQ](#) [MTCH6102-IMV](#) [CAP1128-1-BP-TR](#) [CA30CAF16PA](#)
[STMPE16M31QTR](#) [STMPE16M31PXQTR](#) [STM8T143-EVAL](#) [XT230A1PAL2](#) [LC717A00AR-NH](#)