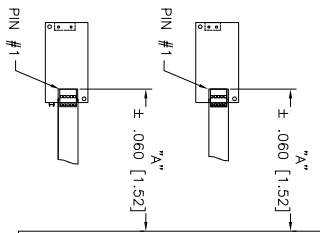
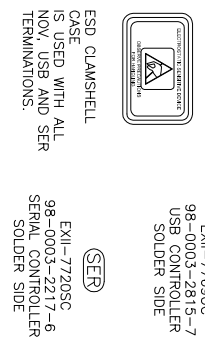
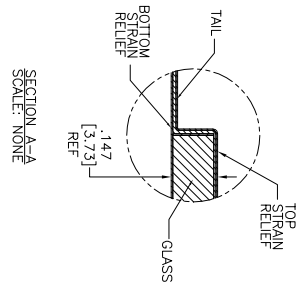


OGA DIAGONAL: 31.48 [799.7]
 VA DIAGONAL: 30.09 [764.4]
 PA DIAGONAL: 28.37 [720.5]

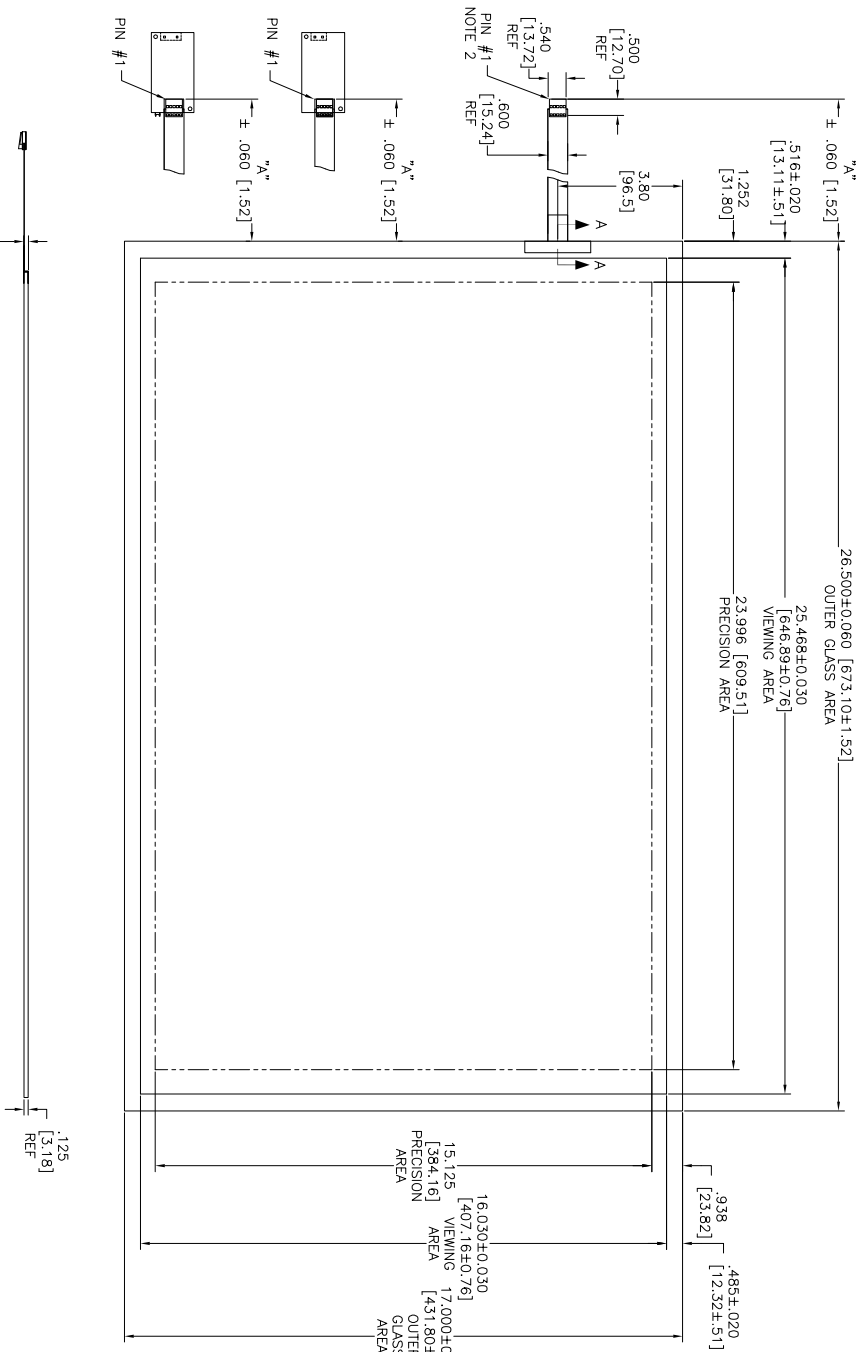


.147±.020 [3.73±.51]
 TOTAL THICKNESS OF GLASS, CABLE AND STRAIN RELIEF

- NOTES:
1. WEIGHT OF GLASS IN GRAMS: 2214±10%
 2. NICOMATIC HOUSING P/N: OLOS
 3. NICOMATIC RECEPTACLES (PINS) MATTE TIN PLATED P/N: 14106-12
 4. HOUSING ORIENTED WITH LATCH DOWN

PINOUT	
1	LR
2	LL
3	SHLD
4	UL
5	UR

US NUMBER	TYPE	DIM "A" (TOTAL GLASS TO CONNECTOR)	A/G FINISH	PROD. SPEC
98-0003-3481-7	FFC	8.00" [203.20]	AG500	23655
98-0003-3480-9	SER	8.00" [203.20]	AG500	23655
98-0003-3479-1	USB-R	8.00" [203.20]	AG500	23655



UNITS	INCHES [MM]
TOLERANCES UNLESS OTHERWISE SPECIFIED	
X	± .03 [.76]
.XX	± .015 [.38]
.XXX	± .01 [.25]
ANGLES	± 1°

© COPYRIGHT 2004 3M TOUCH SYSTEMS
 THIS DOCUMENT IS THE PROPERTY OF 3M TOUCH SYSTEMS AND IS TO BE USED OR REPRODUCED IN ANY MANNER WITHOUT THE WRITTEN PERMISSION OF 3M TOUCH SYSTEMS.

REV	DESCRIPTION	DATE	BY
B	REVISED PER CO 034264	2/12	SB
01	RELEASE PER CO 030786	8/09	AH

MARKETING DRAWING
 SCT32NN 30.09" W

DATE	SCALE	BY	CHKD	APP'D	REV
8/09	1 = 1	AH			B

DOC NO	REV	DATE	BY
37298-MKT			

X-ON Electronics

Largest Supplier of Electrical and Electronic Components

Click to view similar products for [Capacitive Touch Sensors](#) category:

Click to view products by [3M](#) manufacturer:

Other Similar products are found below :

[CP8186AT](#) [LC717A10AJ-AH](#) [CP7709DT](#) [AT42QT1012-MAH](#) [FK 8-1](#) [SMBTASK3KIT6](#) [LC717A10AR-NH](#) [MCP2036T-I/MG](#) [CP3155T](#)
[QT113BISG](#) [CAP1166-1-CZC-TR](#) [CM12-08EBP-KW1](#) [CR12CN04DPO-E2](#) [CR30SCF10ATO](#) [CR30SCF10DPO](#) [BCS M30BBI2-PSC15D-](#)
[S04K](#) [CA30CAF16PAM1](#) [VC12RN230](#) [XT130B1FBL2](#) [FDC1004DGSR](#) [FDC1004DGST](#) [CR18SCF05DPO](#) [CR30CN15DPO-E2](#)
[VC12RT23010M](#) [CDWM3020ZPM](#) [17-8421-226](#) [VC12RN924](#) [AT42QT1050-MMH](#) [AT42QT1050-MMHR](#) [AT42QT1110-AU](#)
[AT42QT1244-AU](#) [AT42QT1244-AU](#) [AT42QT1481-AUR](#) [OTBA5L](#) [OTBVR81LQD](#) [PBCL22T](#) [SM31RDLBQD](#) [AT42QT1111-MU](#)
[AT42QT1244-MU](#) [AT42QT2100-MUR](#) [AT42QT2120-MMHR](#) [VTBN6LQ](#) [MTCH6102-IMV](#) [CAP1128-1-BP-TR](#) [CA30CAF16PA](#)
[STMPE16M31QTR](#) [STMPE16M31PXQTR](#) [STM8T143-EVAL](#) [XT230A1PAL2](#) [LC717A00AR-NH](#)