

NOTES:

1. WEIGHT OF GLASS IN GRAMS: 1196±10%
2. NICHROMATIC HOUSING P/N: CLOS
3. NICHROMATIC RECEPTACLES (PINS) MATTE TIN PLATED P/N: 14106-12

MARKETING DRAWING
SCT32NN 22.37" W

REV	CHANGE NOTICE	DATE	DRW
K	REVISE PER CO 036256	4/13	SB
J	REVISE PER CO 034069	1/12	SB
H	REVISE PER CO 033640	10/11	SB

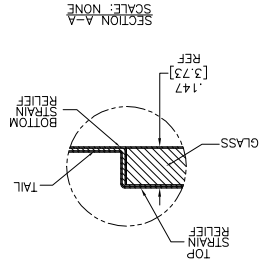
PINOUT	
1	UL
2	UR
3	SHLD
4	LR
5	LL

TOP LEVEL NUMBER	US NUMBER	TYPE	DM "A" (TOTAL GLASS TO CONNECTOR)	A/G FINISH	PROD SPEC
17-9311-205	98-0003-2209-3	FFC	8.00" [203.20]	A6500	23655
17-9311-206	98-0003-2731-6	NOV	SEE DWG	A6500	23655
17-9311-227	98-0003-2734-0	SER	8.00" [203.20]	A6500	23655
17-9311-226	98-0003-3052-6	USB R	8.00" [203.20]	A6500	23655
N/A	98-0003-3662-3	HID D	8.00" [203.20]	A6500	23655
N/A	98-0003-3420-5	FFC	8.00" [203.20]	WC100	34523
N/A	98-0003-3418-9	SER	8.00" [203.20]	WC100	34523
N/A	98-0003-3419-7	USB R	8.00" [203.20]	WC100	34523
N/A	98-0003-3975-8	DUAL	8.00" [203.20]	A6500	23655

ESD CLAMPSHELL
CASE IS USED WITH
ALL NOV, USB AND
SER TERMINATIONS.



- DUAL 98-0003-3818-0 DUAL MODE CONTROLLER
- USB R 98-0003-2814-0 USB CONTROLLER
- HID D 98-0003-3065-8 HID CONTROLLER
- SER 98-0003-2217-6 SERIAL CONTROLLER



OGA DIAGONAL: 23.09 [586.4]
VA DIAGONAL: 22.37 [568.2]
PA DIAGONAL: 21.08 [535.5]

X-ON Electronics

Largest Supplier of Electrical and Electronic Components

Click to view similar products for [Capacitive Touch Sensors](#) category:

Click to view products by [3M](#) manufacturer:

Other Similar products are found below :

[CP8186AT](#) [LC717A10AJ-AH](#) [CP7709DT](#) [AT42QT1012-MAH](#) [FK 8-1](#) [SMBTASK3KIT6](#) [LC717A10AR-NH](#) [MCP2036T-I/MG](#) [CP3155T](#)
[QT113BISG](#) [CAP1166-1-CZC-TR](#) [CM12-08EBP-KW1](#) [CR12CN04DPO-E2](#) [CR30SCF10ATO](#) [CR30SCF10DPO](#) [BCS M30BBI2-PSC15D-](#)
[S04K](#) [CA30CAF16PAM1](#) [VC12RN230](#) [XT130B1FBL2](#) [FDC1004DGSR](#) [FDC1004DGST](#) [CR18SCF05DPO](#) [CR30CN15DPO-E2](#)
[VC12RT23010M](#) [CDWM3020ZPM](#) [17-8421-226](#) [VC12RN924](#) [AT42QT1050-MMH](#) [AT42QT1050-MMHR](#) [AT42QT1110-AU](#)
[AT42QT1244-AU](#) [AT42QT1244-AU](#) [AT42QT1481-AUR](#) [OTBA5L](#) [OTBVR81LQD](#) [PBCL22T](#) [SM31RDLBQD](#) [AT42QT1111-MU](#)
[AT42QT1244-MU](#) [AT42QT2100-MUR](#) [AT42QT2120-MMHR](#) [VTBN6LQ](#) [MTCH6102-IMV](#) [CAP1128-1-BP-TR](#) [CA30CAF16PA](#)
[STMPE16M31QTR](#) [STMPE16M31PXQTR](#) [STM8T143-EVAL](#) [XT230A1PAL2](#) [LC717A00AR-NH](#)