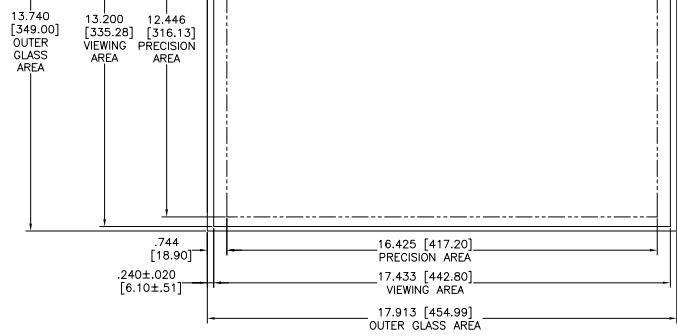
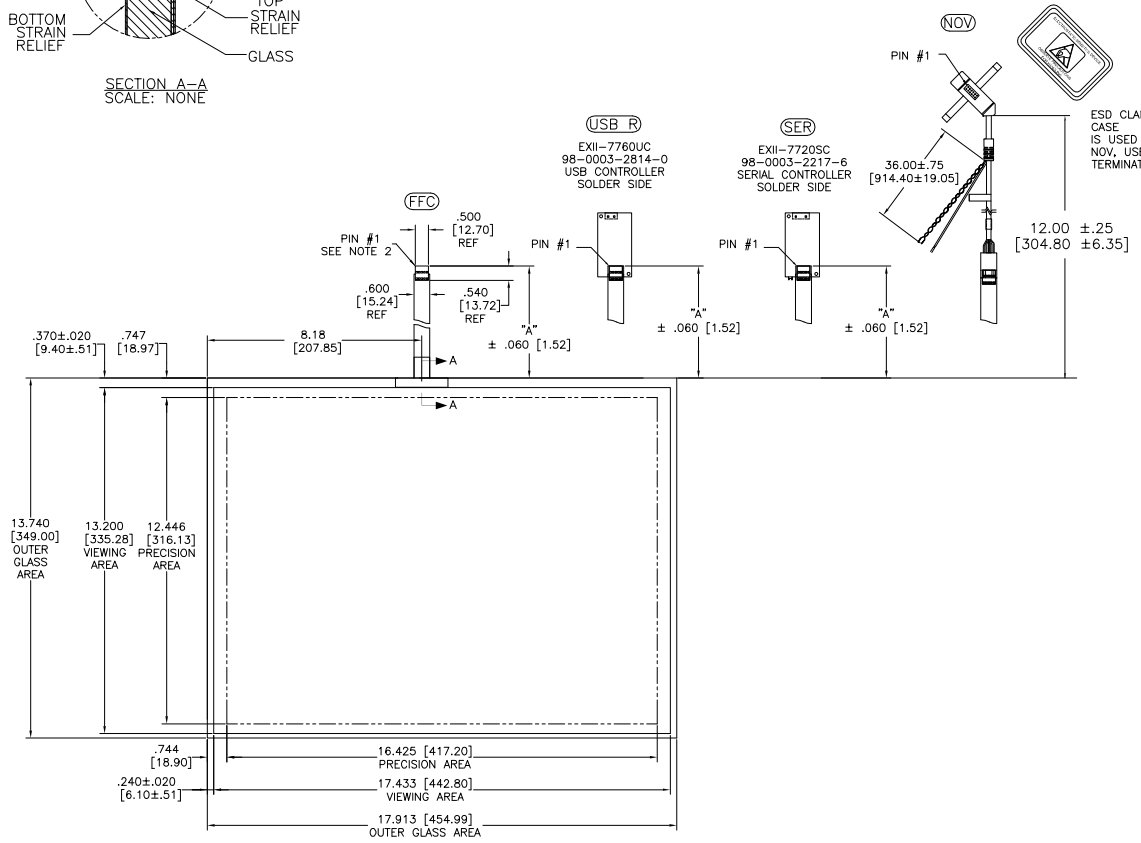
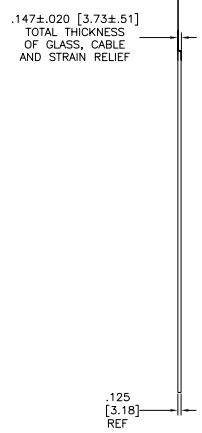
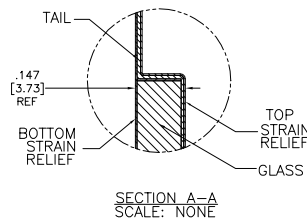


OGA DIAGONAL: 22.58 [573.42]
 VA DIAGONAL: 21.87 [555.41]
 PA DIAGONAL: 20.61 [523.44]

| TOP LEVEL NUMBER | US NUMBER | TYPE | DIM "A" (TOTAL GLASS TO CONNECTOR) | A/G FINISH | PROD SPEC |
|------------------|----------------|-------|------------------------------------|------------|-----------|
| 17-8541-203 | 98-0003-2616-9 | FFC | 4.27" [108.46] | AG500 | 23655 |
| 17-8541-221 | 98-0003-2620-1 | SER | 4.27" [108.46] | AG500 | 23655 |
| 17-8541-206 | 98-0003-2618-5 | NOV | SEE DWG | AG500 | 23655 |
| 17-8541-204 | 98-0003-3158-1 | FFC | 6.00" [152.40] | AG500 | 23655 |
| 17-8541-223 | 98-0003-2199-6 | SER | 6.00" [152.40] | AG500 | 23655 |
| 17-8541-205 | 98-0003-2617-7 | FFC | 8.00" [203.20] | AG500 | 23655 |
| 17-8541-227 | 98-0003-2621-9 | SER | 8.00" [203.20] | AG500 | 23655 |
| 17-8541-218 | 98-0003-3159-9 | USB R | 4.27" [108.46] | AG500 | 23655 |
| 17-8541-220 | 98-0003-3160-7 | USB R | 6.00" [152.40] | AG500 | 23655 |
| 17-8541-226 | 98-0003-3162-3 | USB R | 8.00" [203.20] | AG500 | 23655 |



| PINOUT | |
|--------|------|
| 1 | LL |
| 2 | UL |
| 3 | SHLD |
| 4 | UR |
| 5 | LR |

- NOTES:
- WEIGHT OF GLASS IN GRAMS: 1210±10%
 - NICOMATIC HOUSING P/N: OL05
 NICOMATIC RECEPTACLES (PINS) MATTE TIN PLATED P/N: 14106-12
 HOUSING ORIENTED WITH LATCH DOWN

| REV | CHANGE NOTICE | DATE | DRW |
|-----|-----------------------|------|-----|
| H | REVISED PER CO 036256 | 4/13 | SB |
| G | REVISED PER CO 033533 | 2/12 | SB |
| F | REVISED PER CO 033616 | 9/11 | SB |

UNITS INCHES [MM]

TOLERANCES UNLESS OTHERWISE SPECIFIED

.X ±
 .XX ±.03 [.76]
 .XXX ±.015 [.38]
 ANGLES ±1°

THIRD ANGLE PROJECTION

DO NOT SCALE DRAWING

SCALE 1 = 1

3M 3M TOUCH SYSTEMS
 METHUEN, MA
 USA

© COPYRIGHT 2004
 THIS DOCUMENT IS COPYRIGHTED PROPERTY OF THE 3M COMPANY AND MAY NOT BE REPRODUCED WITHOUT 3M WRITTEN PERMISSION OR USED OR DISCLOSED FOR OTHER THAN 3M AUTHORIZED PURPOSES.

DRAWN K CROWLEY 9/05

TITLE

MARKETING DRAWING
 SCT32NN 21.87"

CAD FORMAT AUTOCAD SHEET 1 OF 1

SIZE C DOCUMENT NO. 28423-MKT REV H

X-ON Electronics

Largest Supplier of Electrical and Electronic Components

Click to view similar products for [3M manufacturer](#):

Other Similar products are found below :

[SC401U](#) [98-0003-3071-6](#) [FP301-3/16-48"-RED-HDR-25 PCS](#) [929665-01-03-EU](#) [929710-10-07-RK](#) [N3428-6003RB](#) [2516-6002UG](#) [00-054007-70220-7](#) [00-054007-34717-0](#) [021200-40230](#) [6-5-F9460PC](#) [6840-2X50-GRAY](#) [701-W](#) [FDV14-187C](#) [FE-5100-5290-8](#) [812510-100](#) [8204-3LFM](#) [MNG14BCX](#) [FP301-1-6"-Clear](#) [FP301-1/8-6"-Black](#) [FP301-2-48"-Black-Bulk](#) [FV14-6C](#) [920102-01-25-R](#) [923835-BK-C](#) [927739-40](#) [929835-01-28-RK](#) [929974-01-40-R](#) [951240-2520-AR-PR](#) [960X/980X](#) [98-0003-3075-7](#) [1/2-5-5430](#) [1/2-5-850S](#) [1/2-5-3431](#) [1/2-5-850R](#) [12X12-6-4056B](#) [12X12-6-433](#) [12X12-6-4930](#) [13-38-P](#) [13-500-NB](#) [1-4-4658F](#) [DSTK9013-3420](#) [DSTK9015-3402](#) [14B26-SZLB-A00-0LC](#) [14T50-SZWB-100-0NC](#) [152244-0110-GB](#) [1-5-3437](#) [1-5-4496W](#) [1-5-4943F](#) [1-5-363](#) [1-5-5451](#)