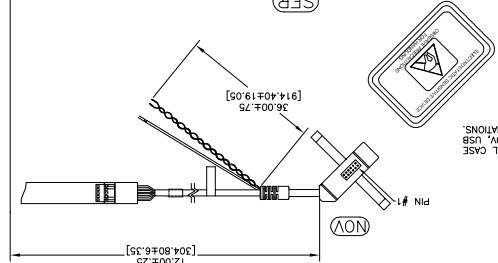


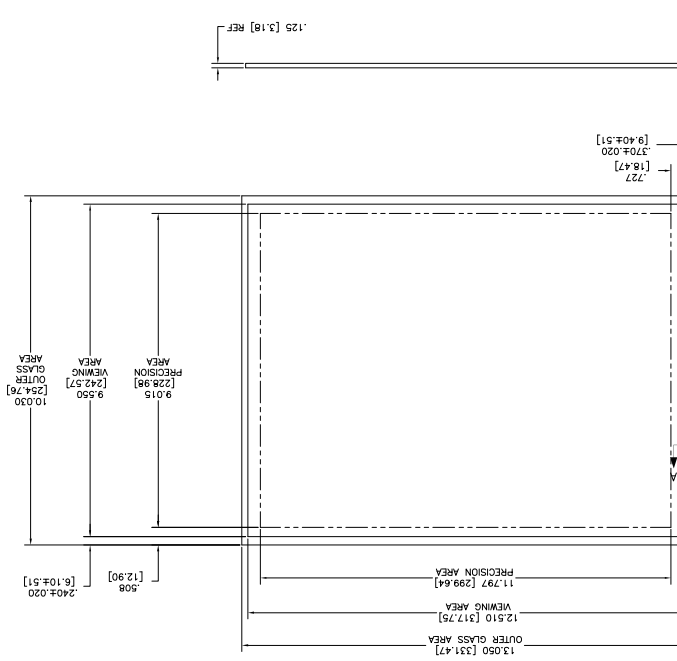
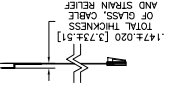
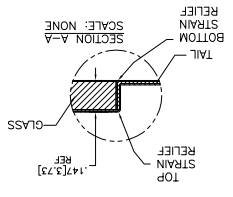
OCA DIAGONAL: 16.46 [418.06]  
 VA DIAGONAL: 15.74 [399.76]  
 PA DIAGONAL: 14.85 [377.12]

ESD CLAMSHELL CASE  
 IS USED WITH ALL NOV, USB  
 AND SER TERMINATIONS.



(SER)  
 EXII-7720SC  
 SERIAL CONTROLLER  
 98-0003-2217-6  
 SOLDER SIDE

(USB R)  
 EXII-7760UC  
 USB CONTROLLER  
 98-0003-2814-0  
 SOLDER SIDE



TOP LEVEL NUMBER	US NUMBER	TYPE	DIM "A" (TOTAL GLASS TO CONNECTOR)	A/G FINISH	PROD SPEC
17-8201-203	98-0003-2559-1	FC	4.27" [108.46]	AG500	23655
17-8201-221	98-0003-2563-3	SER	4.27" [108.46]	AG500	23655
17-8201-206	98-0003-2560-9	NOV	SEE DWG	AG500	23655
17-8201-204	98-0003-2937-9	FC	6.00" [152.40]	AG500	23655
17-8201-223	98-0003-2564-1	SER	6.00" [152.40]	AG500	23655
17-8201-218	98-0003-2938-7	USB R	4.27" [108.46]	AG500	23655
17-8201-205	98-0003-3242-3	FC	8.00" [203.20]	AG500	23655
17-8201-226	98-0003-3243-1	USB R	8.00" [203.20]	AG500	23655
17-8201-227	98-0003-3244-9	SER	8.00" [203.20]	AG500	23655

REV	DATE	CHANGE NOTICE
H	4/13	REVISED PER CO 036256
G	10/11	REVISED PER CO 033533
F	9/11	REVISED PER CO 033535

3M TOUCH SYSTEMS  
 MILWAUKEE, MA USA  
 © COPYRIGHT 2004  
 THIS DOCUMENT IS COPYRIGHTED PROPERTY OF THE  
 3M COMPANY AND MAY NOT BE REPRODUCED  
 OR TRANSMITTED IN ANY FORM OR BY ANY  
 MEANS, ELECTRONIC OR MECHANICAL, FOR  
 PURPOSES OTHER THAN 3M AUTHORIZED  
 PURPOSES.

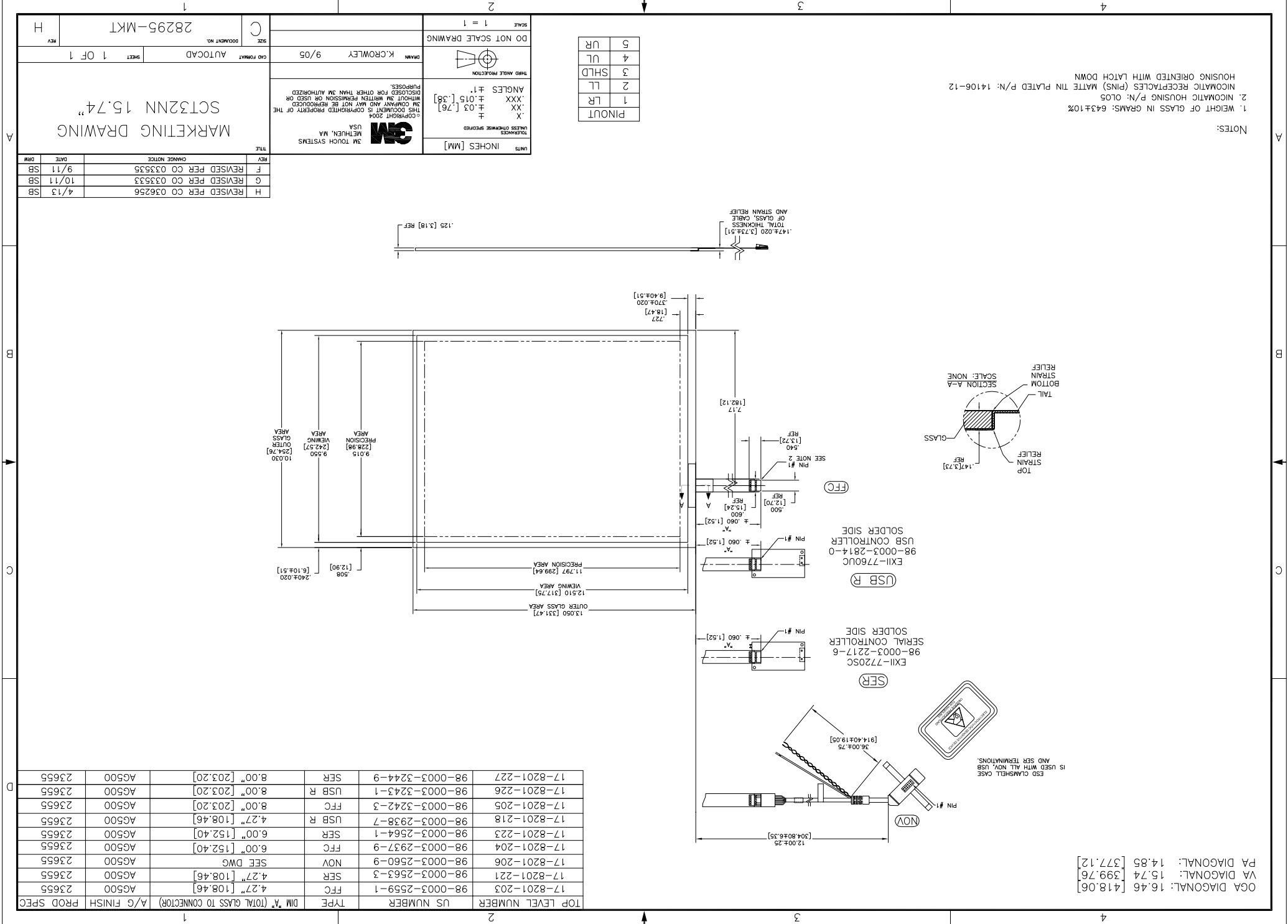
UNITS INCHES [MM]  
 TOLERANCES UNLESS OTHERWISE SPECIFIED  
 X ±  
 .XX ±.03 [.76]  
 .XXX ±.015 [.38]  
 ANGLES ±1°  
 THIRD ANGLE PROJECTION

DO NOT SCALE DRAWING  
 SCALE 1 = 1

DRWN K.CROWLEY 9/05  
 AUTOCAD 1 OF 1  
 28295-MKT  
 H

PINOUT	1	LR
	2	LL
	3	SHLD
	4	UL
	5	UR

NOTES:  
 1. WEIGHT OF GLASS IN GRAMS: 64±1.0%  
 2. NICOMATIC HOUSING P/N: 0L05  
 NICOMATIC RECEPTACLES (PINS) MATTE TIN PLATED P/N: 14106-12  
 HOUSING ORIENTED WITH LATCH DOWN



## X-ON Electronics

Largest Supplier of Electrical and Electronic Components

*Click to view similar products for [Capacitive Touch Sensors](#) category:*

*Click to view products by [3M](#) manufacturer:*

Other Similar products are found below :

[CP8186AT](#) [LC717A10AJ-AH](#) [CP7709DT](#) [AT42QT1012-MAH](#) [FK 8-1](#) [SMBTASK3KIT6](#) [LC717A10AR-NH](#) [MCP2036T-I/MG](#) [CP3155T](#)  
[QT113BISG](#) [CAP1166-1-CZC-TR](#) [CM12-08EBP-KW1](#) [CR12CN04DPO-E2](#) [CR30SCF10ATO](#) [CR30SCF10DPO](#) [BCS M30BBI2-PSC15D-](#)  
[S04K](#) [CA30CAF16PAM1](#) [VC12RN230](#) [XT130B1FBL2](#) [FDC1004DGSR](#) [FDC1004DGST](#) [CR18SCF05DPO](#) [CR30CN15DPO-E2](#)  
[VC12RT23010M](#) [CDWM3020ZPM](#) [17-8421-226](#) [VC12RN924](#) [AT42QT1050-MMH](#) [AT42QT1050-MMHR](#) [AT42QT1110-AU](#)  
[AT42QT1244-AU](#) [AT42QT1244-AU](#) [AT42QT1481-AUR](#) [OTBA5L](#) [OTBVR81LQD](#) [PBCL22T](#) [SM31RDLBQD](#) [AT42QT1111-MU](#)  
[AT42QT1244-MU](#) [AT42QT2100-MUR](#) [AT42QT2120-MMHR](#) [VTBN6LQ](#) [MTCH6102-IMV](#) [CAP1128-1-BP-TR](#) [CA30CAF16PA](#)  
[STMPE16M31QTR](#) [STMPE16M31PXQTR](#) [STM8T143-EVAL](#) [XT230A1PAL2](#) [LC717A00AR-NH](#)