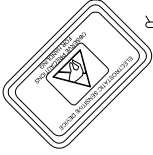


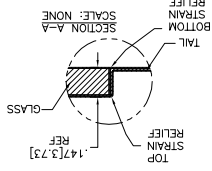
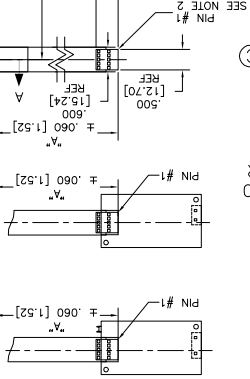
OCA DIAGONAL: 20.46 [519.68]
 VA DIAGONAL: 19.74 [501.35]
 PA DIAGONAL: 18.61 [472.61]

TOP LEVEL NUMBER	US NUMBER	TYPE	DIM "A" (TOTAL GLASS TO CONNECTOR)	A/G FINISH	PROD SPEC
17-8551-204	98-0003-2622-7	F/C	6.00" [152.40]	AG500	23655
17-8551-220	98-0003-3163-1	USB R	6.00" [152.40]	AG500	23655
17-8551-223	98-0003-2624-3	SER	6.00" [152.40]	AG500	23655
17-8551-221	98-0003-3164-9	SER	4.27" [108.46]	AG500	23655
17-8551-205	98-0003-3260-5	F/C	8.00" [203.20]	AG500	23655
17-8551-226	98-0003-3346-2	USB R	8.00" [203.20]	AG500	23655
17-8551-227	98-0003-3261-3	SER	8.00" [203.20]	AG500	23655



(SER)
 EXII-7720SC
 98-0003-2217-6
 SERIAL CONTROLLER
 SOLDER SIDE

(USB R)
 EXII-7760UC
 98-0003-2814-0
 USB CONTROLLER
 SOLDER SIDE

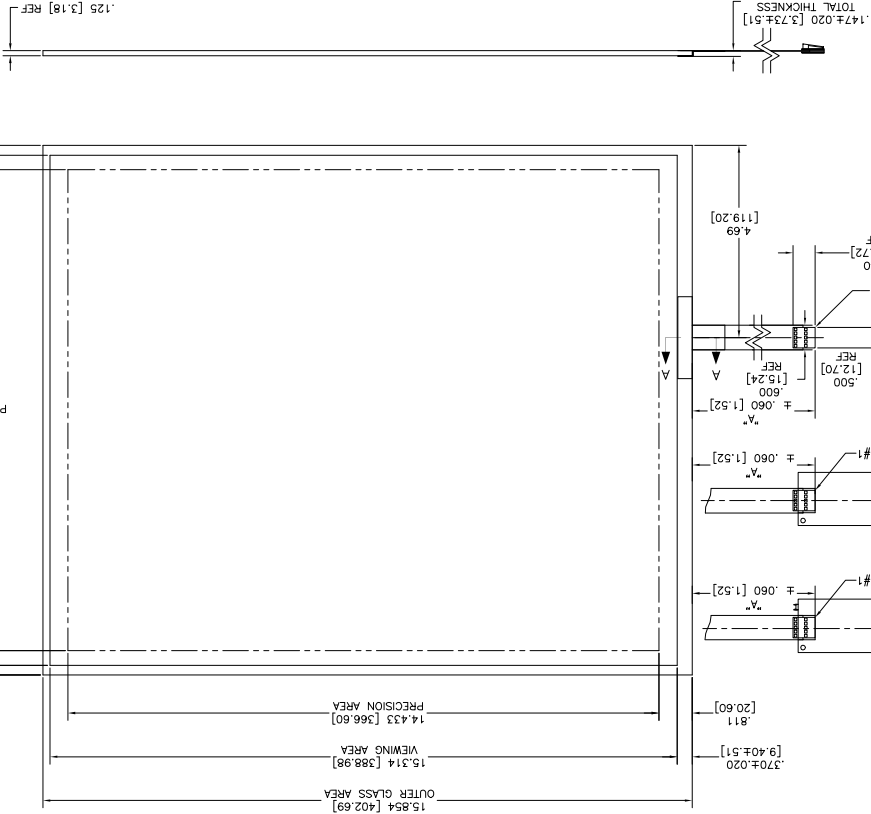


NOTES:

1. WEIGHT OF GLASS IN GRAMS: 1008±10%
2. NICOOMATIC HOUSING P/N: 0L05
- HOUSING ORIENTED WITH LATCH DOWN

14106-12 P/N: 14106-12

PINOUT	
1	LR
2	LL
3	SHLD
4	UL
5	UR



REV	DATE	DMW
L	4/13	SB
K	9/11	SB
J	8/11	SB

CHANGE NOTICE

REVISED PER CO 036256
 REVISED PER CO 033533
 REVISED PER CO 033454

MARKETING DRAWING
 SCT32NN 19.74"

3M TOUCH SYSTEMS
 WALTHAM, MA USA
 COPYRIGHT 2004
 THIS DOCUMENT IS COPYRIGHTED PROPERTY OF THE COMPANY AND MAY NOT BE REPRODUCED WITHOUT THE WRITTEN PERMISSION OR USED FOR PURPOSES OTHER THAN 3M AUTHORIZED PURPOSES.

UNITS INCHES [MM]
 THICKNESS OTHERS SPECIFIED
 X ±
 .XX ±.03 [.76]
 .XXX ±.015 [.38]
 ANGLES ±1°

THIRD ANGLE PROJECTION

DO NOT SCALE DRAWING

SCALE 1 = 1

DRAWN K.CROWLEY 9/05

SIZE C

DOCUMENT NO. 28364-MKT

REV L

X-ON Electronics

Largest Supplier of Electrical and Electronic Components

Click to view similar products for [Capacitive Touch Sensors](#) category:

Click to view products by [3M](#) manufacturer:

Other Similar products are found below :

[CP8186AT](#) [LC717A10AJ-AH](#) [CP7709DT](#) [AT42QT1012-MAH](#) [FK 8-1](#) [SMBTASK3KIT6](#) [LC717A10AR-NH](#) [MCP2036T-I/MG](#) [CP3155T](#)
[QT113BISG](#) [CAP1166-1-CZC-TR](#) [CM12-08EBP-KW1](#) [CR12CN04DPO-E2](#) [CR30SCF10ATO](#) [CR30SCF10DPO](#) [BCS M30BBI2-PSC15D-](#)
[S04K](#) [CA30CAF16PAM1](#) [VC12RN230](#) [XT130B1FBL2](#) [FDC1004DGSR](#) [FDC1004DGST](#) [CR18SCF05DPO](#) [CR30CN15DPO-E2](#)
[VC12RT23010M](#) [CDWM3020ZPM](#) [17-8421-226](#) [VC12RN924](#) [AT42QT1050-MMH](#) [AT42QT1050-MMHR](#) [AT42QT1110-AU](#)
[AT42QT1244-AU](#) [AT42QT1244-AU](#) [AT42QT1481-AUR](#) [OTBA5L](#) [OTBVR81LQD](#) [PBCL22T](#) [SM31RDLBQD](#) [AT42QT1111-MU](#)
[AT42QT1244-MU](#) [AT42QT2100-MUR](#) [AT42QT2120-MMHR](#) [VTBN6LQ](#) [MTCH6102-IMV](#) [CAP1128-1-BP-TR](#) [CA30CAF16PA](#)
[STMPE16M31QTR](#) [STMPE16M31PXQTR](#) [STM8T143-EVAL](#) [XT230A1PAL2](#) [LC717A00AR-NH](#)