

NOTES:

1. WEIGHT OF GLASS IN GRAMS: 1210±10%
2. NICOMATIC HOUSING P/N: 0L05  
NICOMATIC RECEPTACLES (PINS) MATTE TIN PLATED P/N: 14106-12  
HOUSING ORIENTED WITH LATCH DOWN

PINOUT	1	LL
	2	UL
	3	SHLD
	4	UR
	5	LR

UNITS [MM] INCHES [MM]

TOLERANCES UNLESS OTHERWISE SPECIFIED

3M TOUCH SYSTEMS  
METHUEN, MA USA

© COPYRIGHT 2004

THIS DOCUMENT IS COPYRIGHTED PROPERTY OF THE 3M COMPANY AND MAY NOT BE REPRODUCED OR TRANSMITTED IN ANY FORM OR BY ANY MEANS, ELECTRONIC OR MECHANICAL, INCLUDING PHOTOCOPYING, RECORDING, OR BY ANY INFORMATION STORAGE AND RETRIEVAL SYSTEM, WITHOUT THE WRITTEN PERMISSION OF 3M.

ANGLES ±1.1°

±.03 [0.76]

±.015 [0.38]

THIRD ANGLE PROJECTION

DO NOT SCALE DRAWING

SCALE 1 = 1

REV	DATE	CHANGE NOTICE
H	4/13	REVISED PER CO 036256
G	2/12	REVISED PER CO 033533
F	9/11	REVISED PER CO 033616

MARKETING DRAWING  
SCT32NN 21.87

3M TOUCH SYSTEMS  
METHUEN, MA USA

© COPYRIGHT 2004

THIS DOCUMENT IS COPYRIGHTED PROPERTY OF THE 3M COMPANY AND MAY NOT BE REPRODUCED OR TRANSMITTED IN ANY FORM OR BY ANY MEANS, ELECTRONIC OR MECHANICAL, INCLUDING PHOTOCOPYING, RECORDING, OR BY ANY INFORMATION STORAGE AND RETRIEVAL SYSTEM, WITHOUT THE WRITTEN PERMISSION OF 3M.

ANGLES ±1.1°

±.03 [0.76]

±.015 [0.38]

THIRD ANGLE PROJECTION

DO NOT SCALE DRAWING

SCALE 1 = 1

UNITS [MM] INCHES [MM]

TOLERANCES UNLESS OTHERWISE SPECIFIED

3M TOUCH SYSTEMS  
METHUEN, MA USA

© COPYRIGHT 2004

THIS DOCUMENT IS COPYRIGHTED PROPERTY OF THE 3M COMPANY AND MAY NOT BE REPRODUCED OR TRANSMITTED IN ANY FORM OR BY ANY MEANS, ELECTRONIC OR MECHANICAL, INCLUDING PHOTOCOPYING, RECORDING, OR BY ANY INFORMATION STORAGE AND RETRIEVAL SYSTEM, WITHOUT THE WRITTEN PERMISSION OF 3M.

ANGLES ±1.1°

±.03 [0.76]

±.015 [0.38]

THIRD ANGLE PROJECTION

DO NOT SCALE DRAWING

SCALE 1 = 1

UNITS [MM] INCHES [MM]

TOLERANCES UNLESS OTHERWISE SPECIFIED

3M TOUCH SYSTEMS  
METHUEN, MA USA

© COPYRIGHT 2004

THIS DOCUMENT IS COPYRIGHTED PROPERTY OF THE 3M COMPANY AND MAY NOT BE REPRODUCED OR TRANSMITTED IN ANY FORM OR BY ANY MEANS, ELECTRONIC OR MECHANICAL, INCLUDING PHOTOCOPYING, RECORDING, OR BY ANY INFORMATION STORAGE AND RETRIEVAL SYSTEM, WITHOUT THE WRITTEN PERMISSION OF 3M.

ANGLES ±1.1°

±.03 [0.76]

±.015 [0.38]

THIRD ANGLE PROJECTION

DO NOT SCALE DRAWING

SCALE 1 = 1

UNITS [MM] INCHES [MM]

TOLERANCES UNLESS OTHERWISE SPECIFIED

3M TOUCH SYSTEMS  
METHUEN, MA USA

© COPYRIGHT 2004

THIS DOCUMENT IS COPYRIGHTED PROPERTY OF THE 3M COMPANY AND MAY NOT BE REPRODUCED OR TRANSMITTED IN ANY FORM OR BY ANY MEANS, ELECTRONIC OR MECHANICAL, INCLUDING PHOTOCOPYING, RECORDING, OR BY ANY INFORMATION STORAGE AND RETRIEVAL SYSTEM, WITHOUT THE WRITTEN PERMISSION OF 3M.

ANGLES ±1.1°

±.03 [0.76]

±.015 [0.38]

THIRD ANGLE PROJECTION

DO NOT SCALE DRAWING

SCALE 1 = 1

UNITS [MM] INCHES [MM]

TOLERANCES UNLESS OTHERWISE SPECIFIED

3M TOUCH SYSTEMS  
METHUEN, MA USA

© COPYRIGHT 2004

THIS DOCUMENT IS COPYRIGHTED PROPERTY OF THE 3M COMPANY AND MAY NOT BE REPRODUCED OR TRANSMITTED IN ANY FORM OR BY ANY MEANS, ELECTRONIC OR MECHANICAL, INCLUDING PHOTOCOPYING, RECORDING, OR BY ANY INFORMATION STORAGE AND RETRIEVAL SYSTEM, WITHOUT THE WRITTEN PERMISSION OF 3M.

ANGLES ±1.1°

±.03 [0.76]

±.015 [0.38]

THIRD ANGLE PROJECTION

DO NOT SCALE DRAWING

SCALE 1 = 1

UNITS [MM] INCHES [MM]

TOLERANCES UNLESS OTHERWISE SPECIFIED

3M TOUCH SYSTEMS  
METHUEN, MA USA

© COPYRIGHT 2004

THIS DOCUMENT IS COPYRIGHTED PROPERTY OF THE 3M COMPANY AND MAY NOT BE REPRODUCED OR TRANSMITTED IN ANY FORM OR BY ANY MEANS, ELECTRONIC OR MECHANICAL, INCLUDING PHOTOCOPYING, RECORDING, OR BY ANY INFORMATION STORAGE AND RETRIEVAL SYSTEM, WITHOUT THE WRITTEN PERMISSION OF 3M.

ANGLES ±1.1°

±.03 [0.76]

±.015 [0.38]

THIRD ANGLE PROJECTION

DO NOT SCALE DRAWING

SCALE 1 = 1

UNITS [MM] INCHES [MM]

TOLERANCES UNLESS OTHERWISE SPECIFIED

3M TOUCH SYSTEMS  
METHUEN, MA USA

© COPYRIGHT 2004

THIS DOCUMENT IS COPYRIGHTED PROPERTY OF THE 3M COMPANY AND MAY NOT BE REPRODUCED OR TRANSMITTED IN ANY FORM OR BY ANY MEANS, ELECTRONIC OR MECHANICAL, INCLUDING PHOTOCOPYING, RECORDING, OR BY ANY INFORMATION STORAGE AND RETRIEVAL SYSTEM, WITHOUT THE WRITTEN PERMISSION OF 3M.

ANGLES ±1.1°

±.03 [0.76]

±.015 [0.38]

THIRD ANGLE PROJECTION

DO NOT SCALE DRAWING

SCALE 1 = 1

UNITS [MM] INCHES [MM]

TOLERANCES UNLESS OTHERWISE SPECIFIED

3M TOUCH SYSTEMS  
METHUEN, MA USA

© COPYRIGHT 2004

THIS DOCUMENT IS COPYRIGHTED PROPERTY OF THE 3M COMPANY AND MAY NOT BE REPRODUCED OR TRANSMITTED IN ANY FORM OR BY ANY MEANS, ELECTRONIC OR MECHANICAL, INCLUDING PHOTOCOPYING, RECORDING, OR BY ANY INFORMATION STORAGE AND RETRIEVAL SYSTEM, WITHOUT THE WRITTEN PERMISSION OF 3M.

ANGLES ±1.1°

±.03 [0.76]

±.015 [0.38]

THIRD ANGLE PROJECTION

DO NOT SCALE DRAWING

SCALE 1 = 1

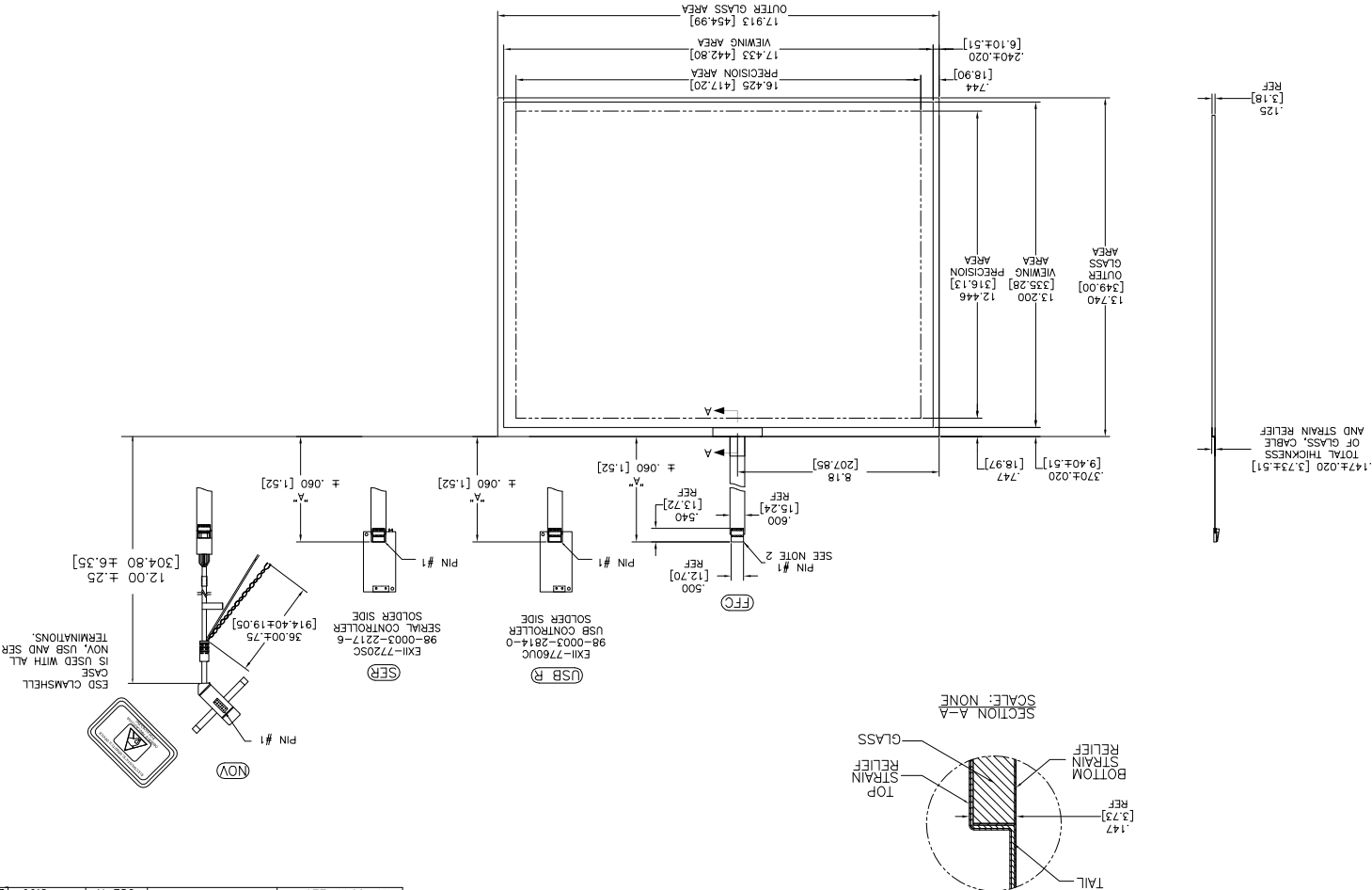
UNITS [MM] INCHES [MM]

TOLERANCES UNLESS OTHERWISE SPECIFIED

3M TOUCH SYSTEMS  
METHUEN, MA USA

© COPYRIGHT 2004

THIS DOCUMENT IS COPYRIGHTED PROPERTY OF THE 3M COMPANY AND MAY NOT BE REPRODUCED OR TRANSMITTED IN ANY FORM OR BY ANY MEANS, ELECTRONIC OR MECHANICAL, INCLUDING PHOTOCOPYING, RECORDING, OR BY ANY INFORMATION STORAGE AND STRAIN RELIEF



TOP LEVEL NUMBER	US NUMBER	TYPE	DM "A" (TOTAL GLASS TO CONNECTION)	A/G FINISH	PROD SPEC
17-8541-203	98-0003-2616-9	FFC	4.27" [108.46]	AG500	23655
17-8541-221	98-0003-2620-1	SER	4.27" [108.46]	AG500	23655
17-8541-206	98-0003-2618-5	NOV	SEE DWG	AG500	23655
17-8541-204	98-0003-3158-1	FFC	6.00" [152.40]	AG500	23655
17-8541-223	98-0003-2199-6	SER	6.00" [152.40]	AG500	23655
17-8541-205	98-0003-2617-7	FFC	8.00" [203.20]	AG500	23655
17-8541-227	98-0003-2621-9	SER	8.00" [203.20]	AG500	23655
17-8541-218	98-0003-3159-9	USB R	4.27" [108.46]	AG500	23655
17-8541-220	98-0003-3160-7	USB R	6.00" [152.40]	AG500	23655
17-8541-226	98-0003-3162-3	USB R	8.00" [203.20]	AG500	23655

OGA DIAGONAL: 22.58 [573.42]  
VA DIAGONAL: 21.87 [555.41]  
PA DIAGONAL: 20.61 [523.44]

## X-ON Electronics

Largest Supplier of Electrical and Electronic Components

*Click to view similar products for [LCD Touch Panels](#) category:*

*Click to view products by [3M](#) manufacturer:*

Other Similar products are found below :

[69-502](#) [87-6001-221](#) [CABLE/RTP/USB](#) [98-0003-2211-9](#) [17-8041-226](#) [17-8041-227](#) [CABLE/RTP/RS232](#) [N010-0557-T011](#) [87-4011-201](#)  
[N010-0554-T352](#) [N010-0554-T504](#) [LCDAL04-0430TL0NCNTBR1.0](#) [FTAS00-8.4AS-4A](#) [FTAS00-10.6AW-4A](#) [FTAS00-5.7AS-4A](#)  
[FTAS00-15.6AW-4A](#) [FTAS00-10.4AS-4A](#) [FTAS00-12.1AN-4A](#) [TP01150A-4KB](#) [TP01121W-4KB](#) [TP01104A-4KB](#) [N010-0554-T814](#)  
[TP01121A-4KB](#) [TP01106W-4KB](#) [FTAS00-12.1AN-4](#) [98000334502](#) [FTAS00-12.1AW-4](#) [FTAS00-10.6AW-4](#) [TKU016CT-A100](#) [FTAS00-](#)  
[19AN-4](#) [FTAS00-15AN-4](#) [FTAS00-15.6AW-4](#) [FTAS00-12.1AW-4A](#) [17-8041-205](#) [98-0003-2514-6](#) [98-0003-2549-2](#) [98-0003-2602-9](#) [98-](#)  
[0003-2678-9](#) [17-8031-205](#) [17-8051-205](#) [17-8091-203](#) [17-8421-205](#) [17-8441-205](#) [17-8441-217](#) [17-8541-226](#) [17-8571-203](#) [17-8581-203](#) [17-](#)  
[8891-205](#) [17-8901-226](#) [17-9681-226](#)