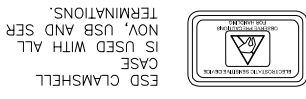


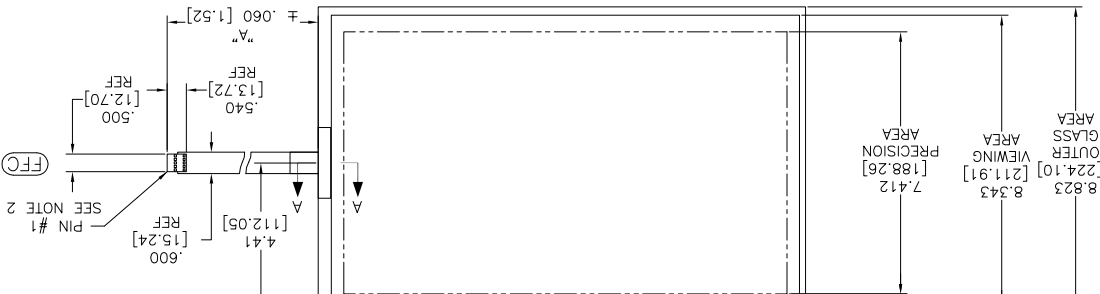
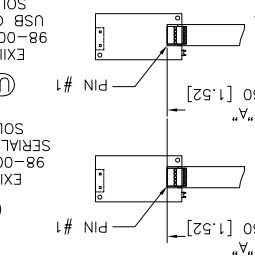
OGA DIAGONAL: 16.36 [415.52]
 VA DIAGONAL: 15.65 [397.41]
 PA DIAGONAL: 14.55 [369.64]

TOP LEVEL NUMBER	US NUMBER	TYPE	DM "A" (TOTAL GLASS TO CONNECTOR)	A/G FINISH	PROD SPEC
17-9621-203	98-0003-3169-8	FCC	4.27" [108.46]	AG500	23655
17-9621-205	98-0003-2969-2	FCC	8.00" [203.20]	AG500	23655
17-9621-226	98-0003-2970-0	USB R	8.00" [203.20]	AG500	23655
17-9621-227	98-0003-2972-6	SER	8.00" [203.20]	AG500	23655
17-9621-221	98-0003-3313-2	SER	4.27" [108.46]	AG500	23655
98-0003-3313-2	98-0003-3313-2	SER	8.00" [203.20]	AG500	23655
98-0003-3458-5	98-0003-3458-5	USB R	6.00" [152.40]	AG500	23655
98-0003-3459-3	98-0003-3459-3	SER	6.00" [152.40]	AG500	23655
98-0003-4228-1	98-0003-4228-1	USB R	8.00" [203.20]	WC100	34523
98-0003-4230-7	98-0003-4230-7	SER	8.00" [203.20]	WC100	34523
98-1100-0091-0	98-1100-0091-0	FCC	8.00" [203.20]	WC100	34523

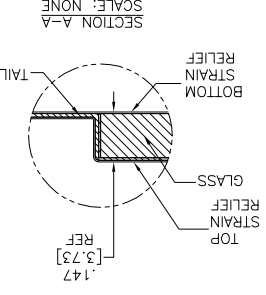


(SER) EXII-77205C
 SERIAL CONTROLLER
 98-0003-2217-6
 SOLDER SIDE

(USB R) EXII-7760UC
 USB CONTROLLER
 98-0003-2814-0
 SOLDER SIDE



1.25
 REF [3.18]
 TOTAL THICKNESS OF GLASS, CABLE AND STRAIN RELIEF
 .147 ± .020 [3.73 ± .51]



NOTES:

1. WEIGHT OF GLASS IN GRAMS: 622 ± 10%
2. NICOMATIC HOUSING P/N: 0L05
3. NICOMATIC RECEPTACLES (PINS) MATTE TIN PLATED P/N: 14106-12 HOUSING ORIENTED WITH LATCH DOWN

PINOUT	1	UL
	2	UR
	3	SHLD
	4	LR
	5	LL

UNITS INCHES [MM]
 3M TOUCH SYSTEMS
 METHUEN, MA USA
 LICENSES OTHERWISE SPECIFIED
 © COPYRIGHT 2004
 THIS DOCUMENT IS COPYRIGHTED PROPERTY OF THE 3M COMPANY AND MAY NOT BE REPRODUCED WITHOUT THE WRITTEN PERMISSION OR USED OR DISCLOSED FOR OTHER THAN 3M AUTHORIZED PURPOSES.

THIRD ANGLE PROJECTION
 ANGLES ± 1°
 .XX ± .03 [.76]
 .XXX ± .015 [.38]
 DO NOT SCALE DRAWING
 SCALE 1 = 1

REV	DATE	CHANGE NOTICE
K	4/13	REVISED PER CO 036256
J	2/13	REVISED PER CO 036099
H	10/12	REVISED PER CO 035587

MARKETING DRAWING
 SCT32NN 15.65" W

DOC FORMAT AUTOCAD SHEET 1 OF 1

DOCUMENT NO. TSD-36245

REV K

X-ON Electronics

Largest Supplier of Electrical and Electronic Components

Click to view similar products for [LCD Touch Panels](#) category:

Click to view products by [3M](#) manufacturer:

Other Similar products are found below :

[69-502](#) [87-6001-221](#) [CABLE/RTP/USB](#) [98-0003-2211-9](#) [17-8041-226](#) [17-8041-227](#) [CABLE/RTP/RS232](#) [N010-0557-T011](#) [87-4011-201](#)
[N010-0554-T352](#) [N010-0554-T504](#) [LCDAL04-0430TL0NCNTBR1.0](#) [FTAS00-8.4AS-4A](#) [FTAS00-10.6AW-4A](#) [FTAS00-5.7AS-4A](#)
[FTAS00-15.6AW-4A](#) [FTAS00-10.4AS-4A](#) [FTAS00-12.1AN-4A](#) [TP01150A-4KB](#) [TP01121W-4KB](#) [TP01104A-4KB](#) [N010-0554-T814](#)
[TP01121A-4KB](#) [TP01106W-4KB](#) [FTAS00-12.1AN-4](#) [98000334502](#) [FTAS00-12.1AW-4](#) [FTAS00-10.6AW-4](#) [TKU016CT-A100](#) [FTAS00-](#)
[19AN-4](#) [FTAS00-15AN-4](#) [FTAS00-15.6AW-4](#) [FTAS00-12.1AW-4A](#) [17-8041-205](#) [98-0003-2514-6](#) [98-0003-2549-2](#) [98-0003-2602-9](#) [98-](#)
[0003-2678-9](#) [17-8031-205](#) [17-8051-205](#) [17-8091-203](#) [17-8421-205](#) [17-8441-205](#) [17-8441-217](#) [17-8541-226](#) [17-8571-203](#) [17-8581-203](#) [17-](#)
[8891-205](#) [17-8901-226](#) [17-9681-226](#)