

# 3M™ DIN R-Form Socket

Right Angle, Solder Tail Termination

DIN 41612 Series



- Inverse boardmount connector
- Select load capability
- Expanded pin counts
- Optional retention clips
- Mates with C-form and R-form plugs
- See the Regulatory Information Appendix (RIA) in the “RoHS compliance” section of [www.3Mconnectors.com](http://www.3Mconnectors.com) for compliance information (RIA E1 & C1 apply)

Date Modified: October 29, 2012

TS-2308-F  
Sheet 1 of 3

## Physical

### Insulation:

Material: Glass Filled Polyester (PBT)  
Flammability: UL 94V-0  
Color: Gray

### Contact:

Material: Copper Alloy

### Plating:

Underplating: 50  $\mu$ ” Min. Nickel  
Wiping Area: See Ordering Information  
Termination: See Ordering Information

## Electrical

Current Rating: 3.0A at 30°C T-rise above Ambient  
Contact Resistance:  $\leq 20$  m $\Omega$   
Insulation Resistance:  $\geq 1,000$  M $\Omega$ , 100V<sub>DC</sub>  
Withstanding Voltage: 1,000 V<sub>AC</sub> for 1 minute

## Environmental

**Temperature Rating:** -55°C to 125°C  
**Process Temperature Rating:** Maximum Insulator Temperature 191°C (solder wave process only)

UL File No.: E68080



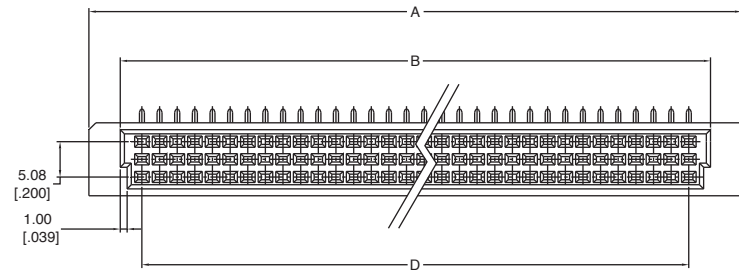
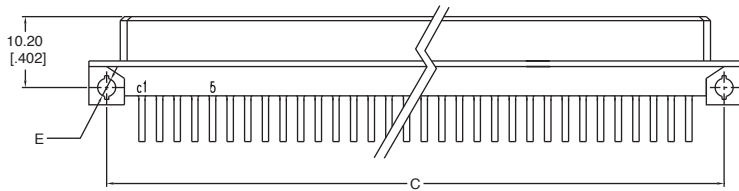
# 3M™ DIN R-Form Socket

Right Angle, Solder Tail Termination

DIN 41612 Series

Table 1

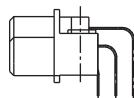
Contact Quantity	Part Number	A	B	C	D	E	F
16	DIN-016RSA-XXX-XXXX	53.40[2.102]	44.40[1.748]	48.26[1.900]	38.10[1.500]	Ø2.60[Ø.102]	0.25[.010]
32	DIN-032RSB-XXX-XXXX	53.40[2.102]	44.40[1.748]	48.26[1.900]	38.10[1.500]	Ø2.60[Ø.102]	0.25[.010]
48	DIN-048RSC-XXX-XXXX	53.40[2.102]	44.40[1.748]	48.26[1.900]	38.10[1.500]	Ø2.60[Ø.102]	0.25[.010]
32	DIN-032RSD-XXX-XXXX	53.40[2.102]	44.40[1.748]	48.26[1.900]	38.10[1.500]	Ø2.60[Ø.102]	0.25[.010]
16	DIN-016RSE-XXX-XXXX	53.40[2.102]	44.40[1.748]	48.26[1.900]	38.10[1.500]	Ø2.60[Ø.102]	0.25[.010]
32	DIN-032RSA-XXX-XXXX	94.00[3.701]	85.00[3.346]	88.90[3.500]	78.74[3.100]	Ø2.60[Ø.102]	0.25[.010]
64	DIN-064RSB-XXX-XXXX	94.00[3.701]	85.00[3.346]	88.90[3.500]	78.74[3.100]	Ø2.60[Ø.102]	0.25[.010]
96	DIN-096RSC-XXX-XXXX	94.00[3.701]	85.00[3.346]	88.90[3.500]	78.74[3.100]	Ø2.60[Ø.102]	0.25[.010]
64	DIN-064RSD-XXX-XXXX	94.00[3.701]	85.00[3.346]	88.90[3.500]	78.74[3.100]	Ø2.60[Ø.102]	0.25[.010]
32	DIN-032RSE-XXX-XXXX	94.00[3.701]	85.00[3.346]	88.90[3.500]	78.74[3.100]	Ø2.60[Ø.102]	0.25[.010]
40	DIN-040RSA-XXX-XXXX	114.32[4.501]	105.32[4.146]	109.22[4.300]	99.06[3.900]	Ø2.80[Ø.110]	0.60[.024]
80	DIN-080RSB-XXX-XXXX	114.32[4.501]	105.32[4.146]	109.22[4.300]	99.06[3.900]	Ø2.80[Ø.110]	0.60[.024]
120	DIN-120RSC-XXX-XXXX	114.32[4.501]	105.32[4.146]	109.22[4.300]	99.06[3.900]	Ø2.80[Ø.110]	0.60[.024]
80	DIN-080RSD-XXX-XXXX	114.32[4.501]	105.32[4.146]	109.22[4.300]	99.06[3.900]	Ø2.80[Ø.110]	0.60[.024]
40	DIN-040RSE-XXX-XXXX	114.32[4.501]	105.32[4.146]	109.22[4.300]	99.06[3.900]	Ø2.80[Ø.110]	0.60[.024]



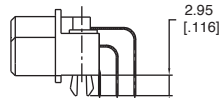
mm  
[inch]

Tolerance Unless Noted			
	X.	.X	.XX
mm	± 0.50	± 0.25	± 0.15

[ ] Dimension for Reference Only



SR1  
WITHOUT RETENTION CLIP



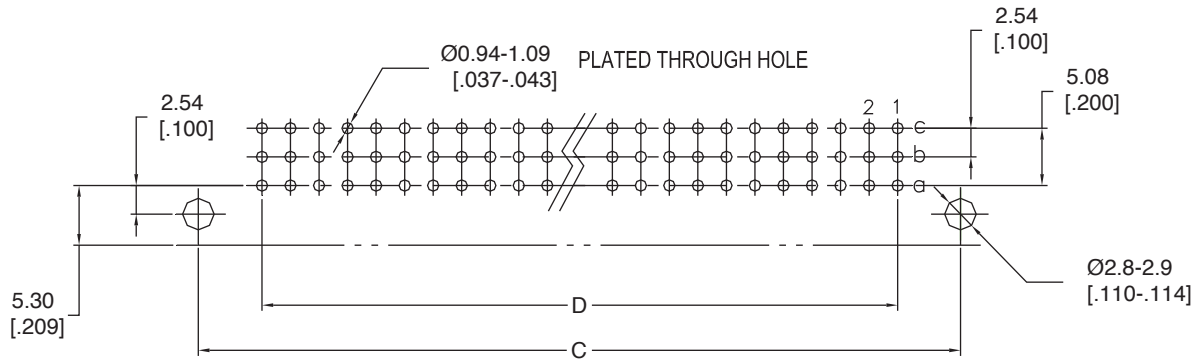
RR1L  
WITH "B" RETENTION CLIPS  
for .062 PCB thickness

TS-2308-F  
Sheet 2 of 3

# 3M™ DIN R-Form Socket

Right Angle, Solder Tail Termination

DIN 41612 Series



RECOMMENDED PCB LAYOUT

## Ordering Information

**DIN - XXXRS X - XXX - XX**

Contact Quantity  
SEE TABLE 1

- A = A Row only (see note)
- B = Rows A & C Filled
- C = Rows A, B & C Filled
- D = Rows A & B Filled
- E = B Row only (see note)

Plating Options:

- SH = 1 - 3 μm Gold on Contact  
120 - 200 μm Matte Tin on Terminal
- FJ = 10 - 20 μm Gold on Contact  
120 - 200 μm Matte Tin on Terminal
- KR = 30 - 40 μm Gold on Contact  
120 - 200 μm Matte Tin on Terminal
- HM = 3 μm Gold on Contact, 7 μm Min. PdNi  
120 - 200 μm Matte Tin on Terminal

Termination Options:

- SR1 = 3.00 [.118]
- RR1L = 3.00 [.118] with 'B' retention clips

Note: A and E options are currently not covered in UL File No. E68080

• This diagram serves only for Part Number descriptive definitions.

PLEASE CONTACT YOUR LOCAL SALES REPRESENTATIVE FOR CUSTOMER SPECIFIC PRODUCT CONFIGURATIONS.

TS-2308-F  
Sheet 3 of 3



**Electronic Solutions Division**  
**Interconnect Solutions**  
<http://www.3Mconnectors.com/>

3M is a trademark of 3M Company.  
For technical, sales or ordering information call  
**800-225-5373**

## X-ON Electronics

Largest Supplier of Electrical and Electronic Components

*Click to view similar products for [DIN 41612 Connectors](#) category:*

*Click to view products by [3M](#) manufacturer:*

Other Similar products are found below :

[09231126901](#) [PCN10F-24P-2.54DS\(72\)](#) [004.767](#) [02221602702](#) [024069](#) [602427301412000](#) [013275](#) [691327-1](#) [74670-0732](#) [74680-0340](#)  
[75880-0015](#) [76453-0014](#) [86093159ALF](#) [923454](#) [QLC260R](#) [120X10099X](#) [120X10019X](#) [120X10089X](#) [120X10129X](#) [121A10039X](#)  
[121A10309X](#) [122A10019X](#) [122A10029X](#) [122A10249X](#) [122A10669X](#) [122A11089X](#) [122A13089X](#) [122A10089X](#) [122A10129X](#)  
[122A10349X](#) [122A13359X](#) [1377391-4](#) [1393583-2](#) [1393726-7](#) [140X10059X](#) [140X10129X](#) [143-1913-000](#) [143-1908-000](#) [1484472-1](#) [173052](#)  
[2110070-1](#) [2110070-2](#) [CBC20T00-008FDS5-0-1-002VR](#) [983-0SE12-12P6](#) [17041102202](#) [172699-5036](#) [173051](#) [PCN10-96S-2.54DSA\(77\)](#) [2-](#)  
[1393557-4](#) [2-1437084-2](#)