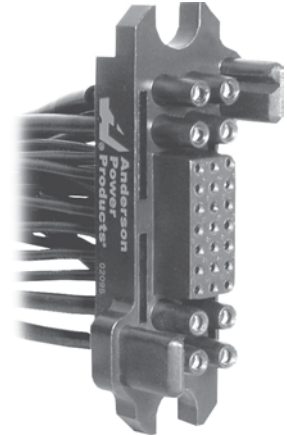


Anderson Power Products new line of power drawer series connectors gives our customers more selections than ever to meet their power connector needs. These cost effective, mixed power and signal drawer connectors are manufactured using the same high quality standards that have made APP a leader in the power connector industry for years. The drawer series can be used for a wide range of drawer-type applications such as rectifiers, mainframe computers, telecommunications, and network equipment. If power and signal is required, let Anderson Power Products be "Your Best Connection."

FEATURES

- **Industry Standard Contacts**
Allows for cross mating with competitive product
- **Wide Selection of Contact Termination**
Provides the designer a wide variety of packaging options
- **First-mate and Last-mate Capability**
Grounds and powers the system before mating of signal circuits
- **Integral Guide Pins**
Corrects misalignment during blind mating



PRODUCT SPECIFICATIONS

| Electrical | #12 | #16 | #20 | #30 | Materials | |
|--------------------------------------|--------------|------|------|------|-------------------------------|--------------------|
| Current Rating - (Amperes) | 35 | 25 | 5 | 3* | Insulator | PBT UL94 V-0 |
| Voltage Rating - (AC/DC) | 600 | 600 | 600 | 600 | Crimp Pin or Socket Body | Copper Alloy |
| Voltage Drop mV | 3.30 | 2.1 | 0.70 | 0.81 | Solder Cup Pin or Socket Body | Brass |
| Dielectric Withstanding Voltage (AC) | 2,200 | | | | PCB Pin or Socket Body | Brass |
| Working Temperature Range (°C) | -40° to 125° | | | | Female Contact | BeCu |
| (°F) | -40° to 257° | | | | | |
| Mechanical | #12 | #16 | #20 | #30 | Contact Plating | |
| Insertion Force Per Contact (lbf) | 1.80 | 1.20 | 0.43 | 0.43 | #12 & #16 | Silver Over Nickel |
| (N) | 8.04 | 5.39 | 1.96 | 1.96 | #20, #12HP & #30 | Gold Over Nickel |
| Extraction Force Per Contact (lbf) | 1.02 | 0.50 | 0.07 | 0.07 | | |
| (N) | 4.51 | 2.26 | 0.29 | 0.29 | | |
| Mating Cycles No Load | 250 | | | | | |



US File No. E26226

* Non - UL

ORDERING INFORMATION

Housings Only

| Part Number | Gender | Contacts AWG | | |
|-------------|--------|--------------|-----|-----|
| | | #12 | #16 | #20 |
| 035LDAP | Pin | 8 | — | 21 |
| 035LDAS | Socket | 8 | — | 21 |
| 035LDBP | Pin | 4 | 4 | 21 |
| 035LDBS | Socket | 4 | 4 | 21 |
| 035LDCP | Pin | — | 8 | 21 |
| 035LDCS | Socket | — | 8 | 21 |

Socket Contacts

| Part Number | Termination | Wire | |
|-------------|----------------------|------|--------|
| | | AWG | sq. mm |
| SC30-GN | Crimp* | #30 | .05 |
| SC20-GN | Crimp* | #20 | .5 |
| SP20-GN | PCB tail* | #20 | .5 |
| SS20-GN | Solder cup, standard | #20 | .5 |
| SC16-SN | Crimp | #16 | .96 |
| SP16-SN | PCB | #16 | .96 |
| SS16-SN | Solder cup, standard | #16 | .96 |

* Gold Plating

socket contacts continued

| Part Number | Termination | Wire | |
|-------------|----------------------|-------|--------|
| | | AWG | sq. mm |
| SC12-SN | Crimp | #12 | 2.5 |
| SP12-SN | PCB tail | #12 | 2.5 |
| SC12-GH | Crimp* | #12hp | 2.5 |
| SP12-GH | PCB tail* | #12hp | 2.5 |
| SS12-SN | Solder cup, standard | #12 | 2.5 |

Pin Contacts

| Part Number | Termination / Pin Length | Wire | |
|-------------|--------------------------|------|--------|
| | | AWG | sq. mm |
| PC30SGN | Crimp, standard | #30 | .05 |
| PC20SGN | Crimp, standard* | #20 | .5 |
| PC20FGN | Crimp, premate* | #20 | .5 |
| PC20LGN | Crimp, postmate* | #20 | .5 |
| PP20SGN | PCB tail, standard* | #20 | .5 |
| PP20FGN | PCB tail, premate* | #20 | .5 |
| PP20LGN | PCB tail, postmate* | #20 | .5 |
| PS20SGN | Solder cup, standard | #20 | .5 |
| PS20FGN | Solder cup, premate | #20 | .5 |
| PS20LGN | Solder cup, post mate | #20 | .5 |
| PC16SSN | Crimp standard | #16 | .96 |
| PC16FSN | Crimp premate | #16 | .96 |
| PC16LSN | Crimp postmate | #16 | .96 |
| PP16SSN | PCB tail standard | #16 | .96 |
| PP16FSN | PCB tail premate | #16 | .96 |
| PP16LSN | PCB tail postmate | #16 | .96 |

pin contacts continued

| Part Number | Termination / Pin Length | Wire | |
|-------------|--------------------------|-------|--------|
| | | AWG | sq. mm |
| PS16SSN | Solder cup, standard | #16 | .96 |
| PS16FSN | Solder cup, premate | #16 | .96 |
| PS16LSN | Solder cup, post mate | #16 | .96 |
| PC12SSN | Crimp, standard | #12 | 2.5 |
| PC12FSN | Crimp, premate | #12 | 2.5 |
| PC12LSN | Crimp, postmate | #12 | 2.5 |
| PP12SSN | PCB tail, standard | #12 | 2.5 |
| PP12FSN | PCB tail, premate | #12 | 2.5 |
| PP12LSN | PCB tail, postmate | #12 | 2.5 |
| PC12SGH | Crimp standard* | #12hp | 2.5 |
| PC12FGH | Crimp premate* | #12hp | 2.5 |
| PC12LGH | Crimp postmate* | #12hp | 2.5 |
| PP12SGH | PCB tail standard* | #12hp | 2.5 |
| PP12FGH | PCB tail premate* | #12hp | 2.5 |
| PP12LGH | PCB tail postmate* | #12hp | 2.5 |

Float Mount Screws

| Part Number | Description |
|-------------|---------------------------------------|
| FMS6-32 | Float mount shoulder screw 6-32 UNC2A |
| FMS8-32 | Float mount shoulder screw 8-32 UNC2A |
| FMSM4-07 | Float mount shoulder screw M4 x0.7 |

WIRE & TOOLING INFORMATION

Wire Strip Length

The following table represents Anderson Power Products recommended strip lengths for the wire.

| Contact Size | Wire Size | Strip Length | |
|--------------|-----------|--------------|------|
| | | inches | mm |
| #30 | #30 | .21 | 5.33 |
| #20 | #24 - #20 | .21 | 5.33 |
| #16 | #20 - #16 | .27 | 6.86 |
| #12 | #14 - #12 | .27 | 6.86 |

Tooling

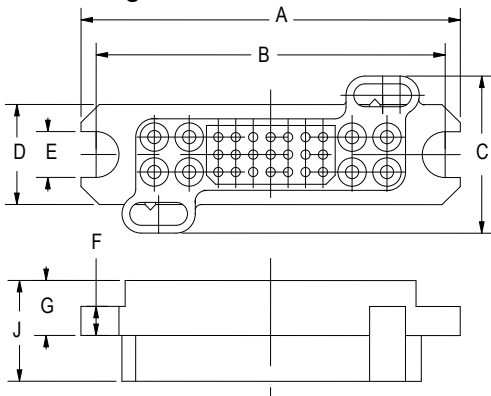
| Contact Part Number | APP Hand Tool | or | Mil Std. Tool (APP Part #) + | Locator / Turret | or | Pneumatic Bench Tool + Die + | Locator |
|-------------------------------|---------------|----|------------------------------|----------------------|----|------------------------------|---------|
| All Crimp Pins (Except #8) | PM1000G1 | or | M22520/1-01 (TM0001) | M22520/1-02 (TL0003) | or | TP0001 | N/A |
| All Crimp Sockets (Except #8) | | | | | | | |

DIMENSIONS

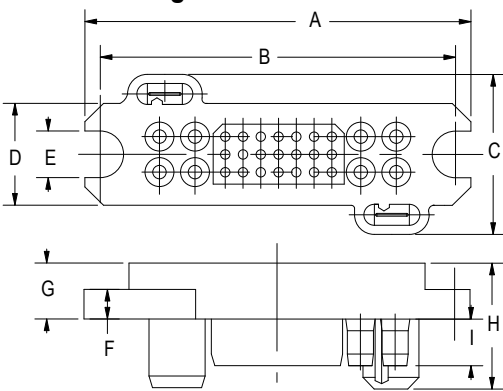
Housings Dimensions

| | - A - | - B - | - C - | - D - | - E - |
|--------|-------|-------|-------|-------|-------|
| inches | 3.26 | 3.0 | 1.33 | 0.86 | 0.40 |
| mm | 82.8 | 76.2 | 33.9 | 21.8 | 10.2 |
| | - F - | - G - | - H - | - I - | - J - |
| inches | 0.25 | 0.49 | 1.13 | 0.40 | 0.89 |
| mm | 6.4 | 12.4 | 28.7 | 10.2 | 22.6 |

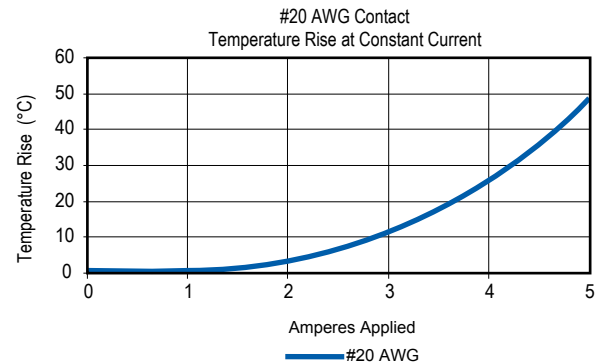
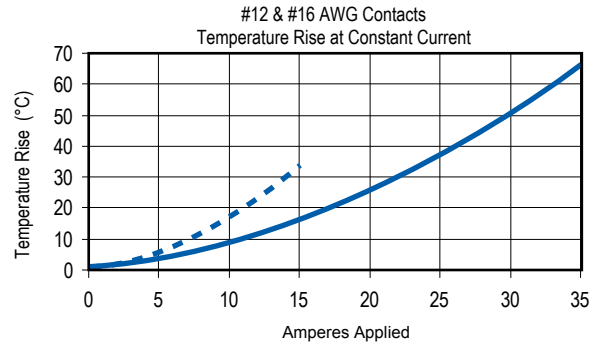
Pin Housing



Socket Housing



TEMPERATURE RISE CHARTS



X-ON Electronics

Largest Supplier of Electrical and Electronic Components

Click to view similar products for [Heavy Duty Power Connectors](#) *category:*

Click to view products by [Anderson Power Products](#) *manufacturer:*

Other Similar products are found below :

[1424439](#) [1424438](#) [09330062652](#) [2-8675P1](#) [605601-1](#) [6340G1](#) [6341G1](#) [6360G1](#) [6373G1](#) [6374g2](#) [6396G1](#) [647757-1](#) [66394-4](#) [6643411-1](#)
[6646058-2](#) [6646137-1](#) [6646138-1](#) [6646348-1](#) [6646479-1](#) [6646608-1](#) [6646786-1](#) [6646940-1](#) [6651091-1](#) [6651525-1](#) [6651529-1](#) [6651778-1](#)
[6651788-1](#) [696465-1](#) [696475-1](#) [73000005059](#) [73000005349](#) [73000005642](#) [73080255059](#) [73080965046](#) [765-15-0080A](#) [765-16-0080B](#)
[789.700-44](#) [789.700-54](#) [80-1010](#) [80-9](#) [827381-1](#) [829992-1](#) [902-77-02113](#) [PL00U-301-10D10](#) [PM103MOOLOO](#) [PM16S1620S32-50](#)
[PM212MOOLOO](#) [PM309FOOLOO](#) [PM324FOOLCH](#) [PMHPAF11S03](#)