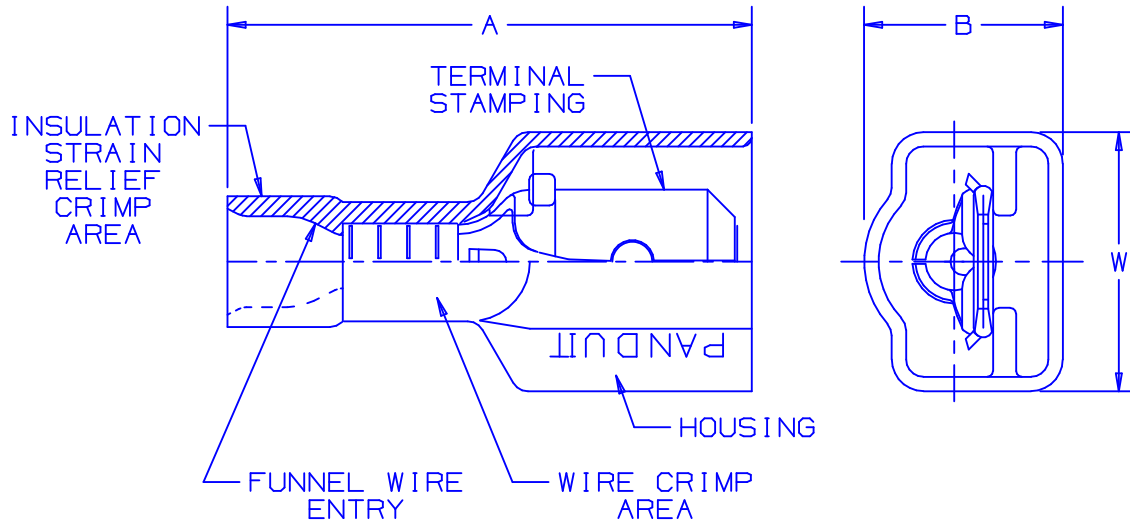
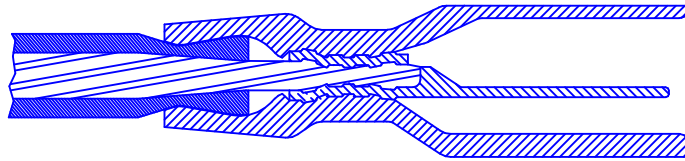


THIS COPY IS PROVIDED ON A RESTRICTED BASIS AND IS NOT TO BE USED IN ANY WAY DETRIMENTAL TO THE INTERESTS OF PANDUIT CORP.



NOTES:

1. USED FOR:
  - A. 600V MAX VOLTAGE RATING
  - B. 221°F (105°C) MAX TEMP RATING
  - C. STRANDED COPPER WIRE ONLY
2. WIRE STRIP LENGTH:  $9/32^{+1/32}_{-0}$  (7.1<sup>+0.8</sup><sub>-0</sub>)
3. MATERIAL:
  - A. STAMPING: NICKEL PLATED BRASS
  - B. HOUSING: PREMIUM GRADE NYLON FOR SUPERIOR STRAIN RELIEF INSULATION CRIMPING
4. PACKAGING:
  - A. STD: -C = 100
  - B. BULK: -M = 1000
5. DIMENSIONS IN BRACKETS ARE IN MILLIMETERS OR mm<sup>2</sup>



SECTION VIEW OF CRIMPED DISCONNECT

PART NUMBER		TAB SIZE	WIRE RANGE AWG (mm <sup>2</sup> )	COLOR	MAX WIRE INSULATION DIAMETER	MIN WIRE INSULATION DIAMETER	DIMENSIONS in			CRIMP TOOLS
PREFIX	PK						A <sup>±.03</sup> (.8)	B <sup>±.02</sup> (.5)	W <sup>±.02</sup> (.5)	
DPF18-250FIM	-M -C	.250 X .032 (6,3 X 0,8)	22-18 (0,5-1,0)	RED	.133 (3,38)	.060 (1,52)	.90 (22,9)	.29 (7,4)	.41 (10,4)	CT-520 CT-1525
DPF14-250FIM	-M -C	.250 X .032 (6,3 X 0,8)	16-14 (1,5-2,5)	BLUE	.156 (3,96)	.090 (2,29)	.90 (22,9)	.29 (7,4)	.41 (10,4)	



A41519\_05

05	7/03	KLFU		UPDATED DRAWING; ADDED CT-1525 TO TOOL CHART							CORP. TINLEY PARK, ILLINOIS DISCOGRIP™ LOOSE PIECE PREMIUM NYLON FULLY INSULATED MALE DISCONNECT .250 X .032
04	1/01	RM	SKB	FILESPEC WAS N41519AA_PCD_03	8933	CCH	JAC				
03	10/98	JD		MATERIAL WAS TIN PLATED	07642						
02	10/96	TM		UPDATED NOTES AND DIMENSIONS	05140	DH	LA				
REV	DATE	BY	CHK	DESCRIPTION	ECN	QA	PM	SUP	CUST	APP	

## X-ON Electronics

Largest Supplier of Electrical and Electronic Components

*Click to view similar products for [Terminals](#) category:*

*Click to view products by [Panduit](#) manufacturer:*

Other Similar products are found below :

[HT-13-10](#) [71M-250-32-NB](#) [01-2065-1-0216](#) [00581P0075](#) [M10-10RX](#) [M10BCK](#) [60205-1](#) [604200-1](#) [60598-1-CUT-TAPE](#) [60617-1-C](#) [60873-1](#) [M14-516R/SK](#) [M14-6RSX](#) [M18-10FLX](#) [M18-8FBX](#) [M18-8R/LX](#) [M18BCK](#) [61314-6-C](#) [61-S](#) [61-SN-A](#) [62-NBM-A](#) [63-S](#) [640179-1](#) [640917-2-CUT-TAPE](#) [6501550002](#) [66107-2-C](#) [66107-4-C](#) [696683-1](#) [696834-1](#) [696861-1](#) [696931-1](#) [696999-1](#) [M8-516RK](#) [M86700006](#) [MA250DMFMX-A](#) [701-2007](#) [701-2307](#) [701-7761-03](#) [70F-110-32-PB](#) [718-N-A](#) [71M-187-20-NBL](#) [71M-250-32-NBL](#) [72F-187-20-NBL](#) [72M-250-32-NBL](#) [7310](#) [73F-250-32](#) [73F-250-32-NBL](#) [73F-250-32-NL](#) [F14-10C](#) [F-1M](#)