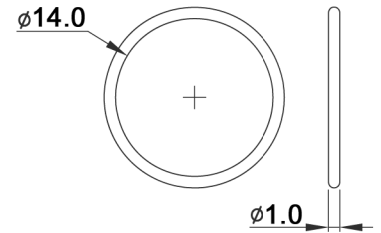
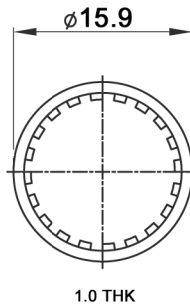
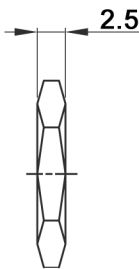
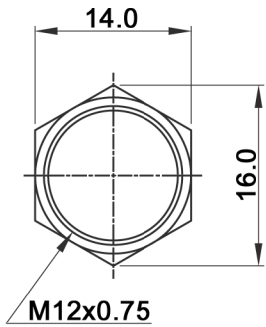


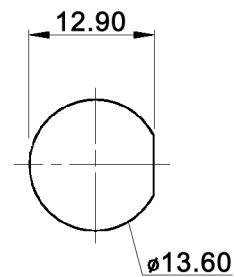
**HARDWARE:**



**PANEL CUT-OUT**

**SWITCH FUNCTION**

Model No.	POS. 1	POS. 2
	DPW 1 BG	ON
Term. Conn.	1-3	OPEN



Tolerances:	0.00: ±0.25mm	Date	Name
	0.0: ±0.40mm	02/14	dr
Modifications	Date	Name	

**DPW 1 BG D1P x**

**knitter-switch**

**30 30 33**

Page

1/2

Specifications:

Contact rating: max.: 500mA, 48V AC; 200mA, 50V DC; 200mA, 250V AC  
 Contact resistance: 50mOhm max.  
 Insulation resistance: 1GOhm min. at 500V DC  
 Dielectric strength: 1500V AC RMS  
 Operating temperature: -30°C to +85°C  
 Mechanical life: 1 000 000 cycles  
 Electrical life: 500 000 cycles  
 Operating force: 2-5N  
 Soldering conditions: 350°C max., 5sec.  
 Panel thickness: 1.5mm min. - 4.0mm max.  
 Travel: 1.5mm  
 Torque: 1.5Nm max. applied to nut  
 Material: Case: diallyl phthalate (DAP) (UL94V-0)  
 Cap: polyamide 6/6  
 Terminal / contacts: gold over silver plated  
 Bushing: zinc alloy, black ED-coated  
 IP rating: IP 67 (mounted)

x	Cap colour
W	white
K	black
R	red
O	orange
Y	yellow
G	green
B	blue



Tolerances: 0.00: ±0.25mm 0.0: ±0.40mm		Date	Name	<b>DPW 1 BG D1P x</b>
		02/14	dr	
		<b>knitter-switch</b>		<b>30 30 33</b>
Modifications		Date	Name	Page 2/2

## X-ON Electronics

Largest Supplier of Electrical and Electronic Components

*Click to view similar products for [Pushbutton Switches](#) category:*

*Click to view products by [Knitter-Switch](#) manufacturer:*

Other Similar products are found below :

[LW1L-M1C10V-A](#) [LW2L-A1C20M-GD](#) [LW2L-M1C20M-A](#) [60324L](#) [M7E-HRN2](#) [67021K512](#) [67081K512X](#) [701PB580](#) [719-5504-000](#)  
[MDPSSGLFS](#) [810KSV30B](#) [MML21KA3ABK](#) [MML23KA3AC05K-001](#) [MML23KW3AA01W](#) [8418K2](#) [8646AB6X718UL](#) [8646ABUL](#)  
[FSDWH](#) [9001KXRK](#) [9001T8BK](#) [9533CD4+U574+U4922](#) [1203MRA](#) [A22EM01S](#) [A595](#) [1202A6](#) [12037A2ULCSA](#) [1203A2UL](#) [ABD122N-](#)  
[B](#) [1211390004](#) [ABN111-Y](#) [ABN400-R](#) [1211500044](#) [1211580012](#) [1212MRA](#) [1232A6NF](#) [RA3CSH6A](#) [1241.1183.7047](#) [1241.2511](#)  
[1241.3428](#) [1223A2ULCSA](#) [1223MRA](#) [1232AX2119](#) [1241.1183.8000](#) [1241.1183.8029](#) [1241.2506](#) [1241.2606](#) [12MA6](#) [1301940184](#)  
[RELBARF6X10\(PLASTIC\)](#) [13435AG](#)