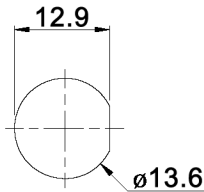


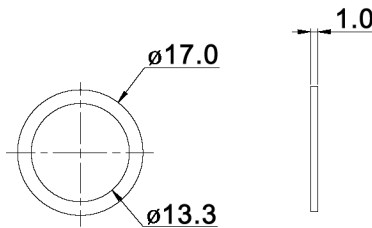
### SWITCH FUNCTION

| Model No.   | POS. 1   | POS. 2 |
|-------------|----------|--------|
|             | DPW 1 BG | ON     |
| Term. Conn. | 1        | short  |
| Schematic   | 3        | open   |

### PANEL CUT-OUT



### RUBBER WASHER



| X=CAP COLOR |        |
|-------------|--------|
| W           | white  |
| K           | black  |
| R           | red    |
| O           | orange |
| Y           | yellow |
| G           | green  |
| B           | blue   |

### Specifications:

|                        |  |
|------------------------|--|
| Contact rating:        | 400mA, 32V AC max.; 100mA, 50V DC max.; 125mA, 125V AC max.  |
| Contact resistance:    | 50mOhm max. at 2-4V DC, 100mA  |
| Insulation resistance: | 1GOhm min. at 500V DC  |
| Dielectric strength:   | 1000V AC (50/60Hz) for 1 minute  |
| Operating temperature: | -30°C to +85°C   |
| Mechanical life:       | 1 000 000 cycles   |
| Electrical life:       | 500 000 cycles   |
| Operating force:       | 2-5N   |
| Soldering conditions:  | 350°C max. for 5sec.   |
| Travel:                | 1.5 +/-0.25mm  |
| Water proofing:        | IP 67  |
| Torque:                | 1.5Nm max. applied to nut  |
| Panel thickness:       | min. 0.8 - max. 1.8mm  |
| Material:              | Case: diallyl phthalate (DAP) (UL94V-0)<br>Cap / bushing: polyamide 6/6<br>Terminal / contact: gold over silver plated |



| Tolerances: 0.00: ±0.25mm<br>0.0: ±0.40mm |      | Date  | Name | <h1>DPW 1 BG S-x</h1> |
|---|------|-------|------|-----------------------|
|   |      | 11/11 | dr   |                       |
|   |      |       |      |                       |
|   |      |       |      |                       |
| <b>knitter-switch</b>                     |      |       |      | <h2>30 24 85</h2>     |
|   |      |       |      | Page                  |
|   |      |       |      | 1/1                   |
| Modifications                             | Date | Name  |      |                       |

## X-ON Electronics

Largest Supplier of Electrical and Electronic Components

*Click to view similar products for [Pushbutton Switches](#) category:*

*Click to view products by [Knitter-Switch](#) manufacturer:*

Other Similar products are found below :

[LW1L-M1C10V-A](#) [LW2L-A1C20M-GD](#) [LW2L-M1C20M-A](#) [60324L](#) [M7E-HRN2](#) [67021K512](#) [67081K512X](#) [701PB580](#) [719-5504-000](#)  
[MDPSSGLFS](#) [810KSV30B](#) [MML21KA3ABK](#) [MML23KA3AC05K-001](#) [MML23KW3AA01W](#) [8418K2](#) [8646AB6X718UL](#) [8646ABUL](#)  
[FSDWH](#) [9001KXRK](#) [9001T8BK](#) [9533CD4+U574+U4922](#) [1203MRA](#) [A22EM01S](#) [A595](#) [1202A6](#) [12037A2ULCSA](#) [1203A2UL](#) [ABD122N-](#)  
[B](#) [1211390004](#) [ABN111-Y](#) [ABN400-R](#) [1211500044](#) [1211580012](#) [1212MRA](#) [1232A6NF](#) [RA3CSH6A](#) [1241.1183.7047](#) [1241.2511](#)  
[1241.3428](#) [1223A2ULCSA](#) [1223MRA](#) [1232AX2119](#) [1241.1183.8000](#) [1241.1183.8029](#) [1241.2506](#) [1241.2606](#) [12MA6](#) [1301940184](#)  
[RELBARF6X10\(PLASTIC\)](#) [13435AG](#)