

**Industrial Ethernet
IE-FCM-RJ45-FJ-A**

Weidmüller Interface GmbH & Co. KG
Klingenbergstraße 16
D-32758 Detmold
Germany
Fon: +49 5231 14-0
Fax: +49 5231 14-292083
www.weidmueller.com



Service interface FrontCom[®] Micro with RJ45 in IP65

General ordering data

Type	IE-FCM-RJ45-FJ-A
Order No.	1018810000
Version	FrontCom Micro RJ45 module, TIA-568A
GTIN (EAN)	4032248730063
Qty.	10 pc(s).

**Industrial Ethernet
IE-FCM-RJ45-FJ-A**

Weidmüller Interface GmbH & Co. KG
 Klingenbergstraße 16
 D-32758 Detmold
 Germany
 Fon: +49 5231 14-0
 Fax: +49 5231 14-292083
 www.weidmueller.com

Technical data
Dimensions and weights

Wall thickness, max.	3 mm	Wall thickness, min.	1 mm
Net weight	3.5 g		

Temperatures

Operating temperature, max.	70 °C	Operating temperature, min.	-40 °C
Operating temperature	-40 °C...70 °C	Storage temperature	
Installation temperature			

Environmental Product Compliance

REACH SVHC	Lead 7439-92-1
------------	----------------

General data

Tightening torque fixing nut	2 Nm	Connection 1	RJ45
Connection 2		Description of article	FrontCom Micro RJ45 module
	IDC	Colour code	black
Wiring	TIA-568A	Insulation cross-section, max.	1.6 mm
Housing main material	PA UL 94 V0	Contact surface	Gold over nickel
Category	Cat.6 _A / Class E _A (ISO/IEC 11801 2010)	Connection diameter, flexible	0.48...0.76 mm
Connection diameter, solid	0.4...0.64 mm	Sheath diameter, min.	5.5 mm
Conductor connection cross-section, flexible (AWG)	AWG 26...AWG 22	Type of mounting	Cabinet, Distribution box
Sheath diameter, max.	10 mm	Protection degree	IP65, in closed state
Shielding	360°; shield contact		
Plugging cycles	750		

Electrical properties

PoE / PoE+	conforming to IEEE 802.3at
------------	----------------------------

Standards

Connector standard	IEC 60603-7-5 1	Certificate no. (cULus)	E316369
--------------------	-----------------	-------------------------	---------

Classifications

ETIM 3.0	EC001134	ETIM 4.0	EC001134
ETIM 5.0	EC001134	ETIM 6.0	EC001121
eClass 5.1	27-25-05-04	eClass 6.2	27-25-05-04
eClass 7.1	27-25-05-04	eClass 8.1	19-17-01-25
eClass 9.0	27-44-03-90	eClass 9.1	27-18-90-90

Approvals

Approvals



ROHS	Conform
------	---------

Creation date February 26, 2019 3:17:08 PM CET

Data sheet**Industrial Ethernet
IE-FCM-RJ45-FJ-A**

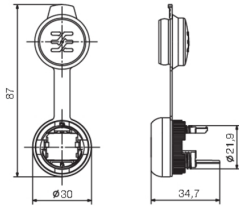
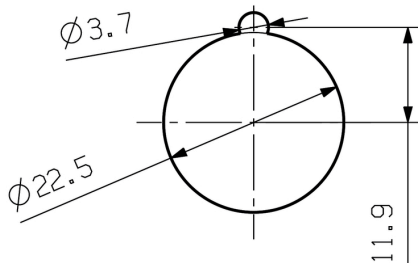
Weidmüller Interface GmbH & Co. KG
Klingenbergstraße 16
D-32758 Detmold
Germany
Fon: +49 5231 14-0
Fax: +49 5231 14-292083
www.weidmueller.com

Technical data**Downloads**

Approval/Certificate/Document of Conformity	DUXR.E316369
Brochure/Catalogue	CAT 9 IETH 15/16 EN FL FIELDWIRING EN PI FRONTCOM EN PI PROFINET CABLING EN
Engineering Data	EPLAN, WSCAD, Zuken E3.S
User Documentation	MAN IE GUIDE DE MAN IE GUIDE EN

**Industrial Ethernet
IE-FCM-RJ45-FJ-A**

Weidmüller Interface GmbH & Co. KG
Klingenbergstraße 16
D-32758 Detmold
Germany
Fon: +49 5231 14-0
Fax: +49 5231 14-292083
www.weidmueller.com

Drawings**Dimensioned drawing****Installation cut-out**

X-ON Electronics

Largest Supplier of Electrical and Electronic Components

Click to view similar products for [LED Lighting Mounting Accessories](#) category:

Click to view products by [Weidmuller](#) manufacturer:

Other Similar products are found below :

[C16142_HEKLA-SOCKET-K](#) [3SU1401-1BF20-3AA0](#) [3SU1401-1BF60-3AA0](#) [3SU1900-0BC31-0AA0](#) [3SU1900-0BC31-0NB0](#) [2213118-2](#)
[3SU1401-2BB20-1AA0](#) [3SU1401-2BB40-1AA0](#) [3SU1401-2BB60-1AA0](#) [3SU1401-2BB60-3AA0](#) [1SFA616921R2131](#) [1SFA616921R2132](#)
[1SFA616921R2133](#) [1SFA611621R1033](#) [1SFA611621R1091](#) [23110022](#) [23110040](#) [23120022](#) [23130000](#) [68550022](#) [68550040](#) [70290000](#)
[70290022](#) [70290040](#) [70300022](#) [76620000](#) [76990022](#) [77280022](#) [77980022](#) [77990001](#) [77990002](#) [77990040](#) [83130001](#) [83130040](#) [83150001](#)
[83150022](#) [83150040](#) [83980001](#) [83980040](#) [83990001](#) [83990022](#) [83990040](#) [84040022](#) [84510002](#) [86050038](#) [86180003](#) [89080002](#) [89080022](#)
[89140002](#) [89980002](#)