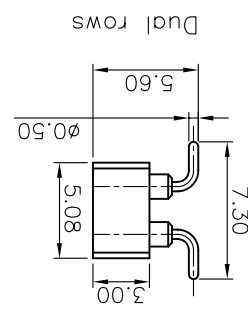


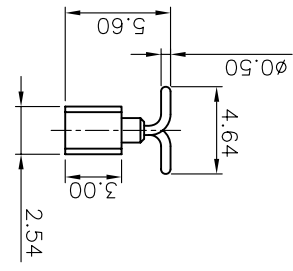
DRAWING NO. C-DS1002-01-XXXX	
SCALE 1:1	SHEET 10F1
DRAWING TYPE CUSTOMER	
GENERAL TOLERANCE X. ±0.60 .X ±0.38 .XX ±0.25	ANGLE TOLERANCE X. ±5. .X ±3. .XX ±2.

PROJECTION	TITLE	IC SOCKET R/A & V/T & SMT
UNITS mm	SHEET SIZE A4	SERIES DS1002-01 SERIES

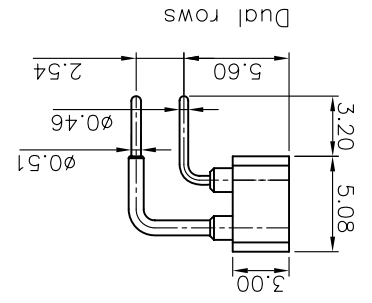
N: No. of contacts



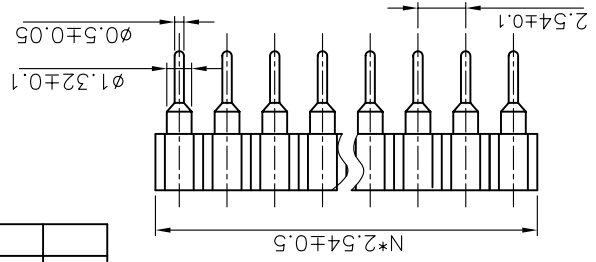
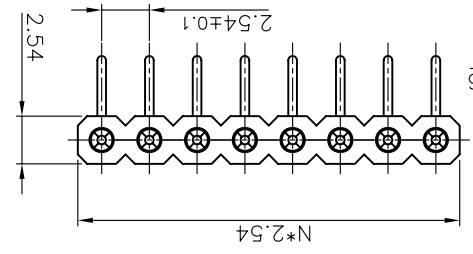
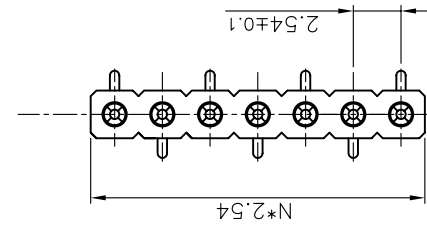
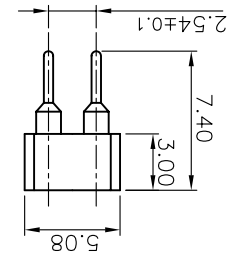
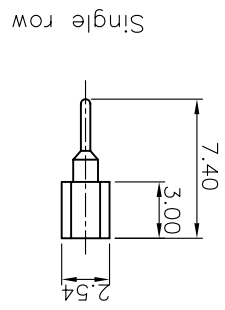
SMT TYPE  
Single row



R/A TYPE  
Single row



V/T TYPE  
Single row



- DS1002-01 - X X X X X X X X
3. PRODUCT NUMBER CODE:
- Clip plating: 1: Tin 150u", 2: Tin 200u", 3: G/F, 4: Gold 3u", 5: Gold 10u", 6: Gold 15u"
  - Pin plating: 1: Tin 150u", 2: Tin 200u", 3: G/F, 4: Gold 3u", 5: Gold 10u", 6: Gold 15u"
  - Mounting type: V: V/T TYPE, R: R/A TYPE, S: SMT TYPE
  - No. of contacts: 1\*1 - 1\*64, 2\*1 - 2\*40

- NOTES:
- ELECTRICAL CHARACTERISTICS:
    - 1.1 CONTACT RESISTANCE: 20mΩ Max.
    - 1.2 DIELECTRIC WITHSTANDING VOLTAGE: 500V AC(rms) FOR 1 MINUTE.
    - 1.3 INSULATION RESISTANCE: 1000MΩ Min.
  - ENVIRONMENT CHARACTERISTICS:
    - 2.1 OPERATING TEMPERATURE: -40C~+105C.

REV.	A	DESCRIPTION	NEW RELEASE	DRAWN	LL 07/02/06	CHECKED	APPROVED

## X-ON Electronics

Largest Supplier of Electrical and Electronic Components

*Click to view similar products for [Headers & Wire Housings](#) category:*

*Click to view products by [Connfly](#) manufacturer:*

Other Similar products are found below :

[95000-104TRLF](#) [10135584-644402LF](#) [DF62W-EP2022PCA](#) [95000-106TRLF](#) [DF62W-2022SCA](#) [DF62W-EP2022PC](#) [2203348](#) [DF62W-2022SC](#) [1084018](#) [1029039](#) [1084017](#) [802-10-012-10-002000](#) [1112640](#) [1112639](#) [891-007-9SS-BST1T](#) [000-34000](#) [0008550134](#) [0009482033](#) [0009507031](#) [57102-F02-18ULF](#) [57102-S06-03LF](#) [57202-S52-04LF](#) [PCN6-15S-2.5E](#) [0039019024](#) [58102-G61-06LF](#) [582553-1](#) [0009485154](#) [0009508121](#) [0022285053](#) [0050291907](#) [018731A](#) [LY20-4P-DT1-P1E-BR](#) [02.125.8002.8](#) [60101931](#) [60598-1 \(Cut Strip\)](#) [M1625-3R/100](#) [61062-3](#) [61082-181009](#) [CSU011177004](#) [636-1427](#) [638009-1](#) [641938-9](#) [641991-4](#) [644168-1](#) [644827-2](#) [647662-1](#) [65039-019ELF](#) [65692-001LF](#) [65781-018](#) [65781-047](#)