

DRAWING NO. C-DS1002-01-XXXX-X-B		SCALE 1:1	
DRAWING TYPE CUSTOMER		SHEET 10F1	
GENERAL TOLERANCE	X. ±0.60	X. ±0.38	.XX ±0.25
ANGLE TOLERANCE	X. ±5.	.X ±3.	.XX ±2.

PROJECTION		UNITS mm	SHEET SIZE A4	SERIES DS1002-01 SERIES
TITLE		2.54mm IC SOCKET(Machine Pin) R/A, V/T & SMT Type		

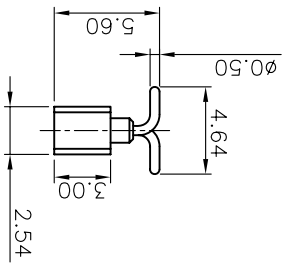
晨翔电子有限公司 CONNLY® CONNLY ELECTRONIC CO., LTD



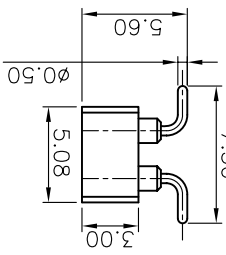
N: No. of contacts

SMT TYPE

Single row

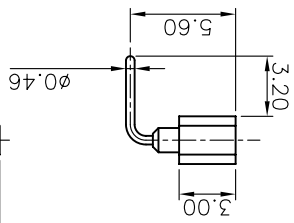


Dual rows

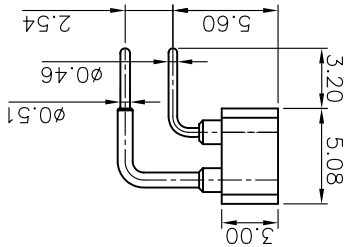


R/A TYPE

Single row

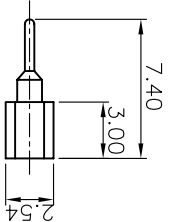


Dual rows

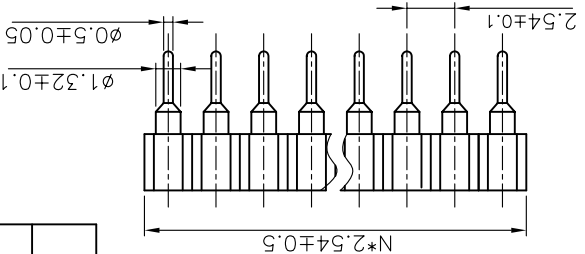
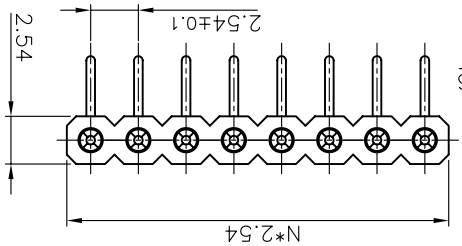
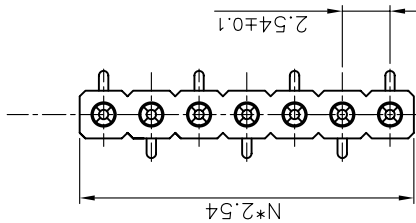
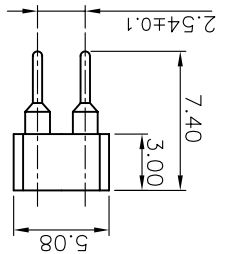


V/T TYPE

Single row



Dual rows

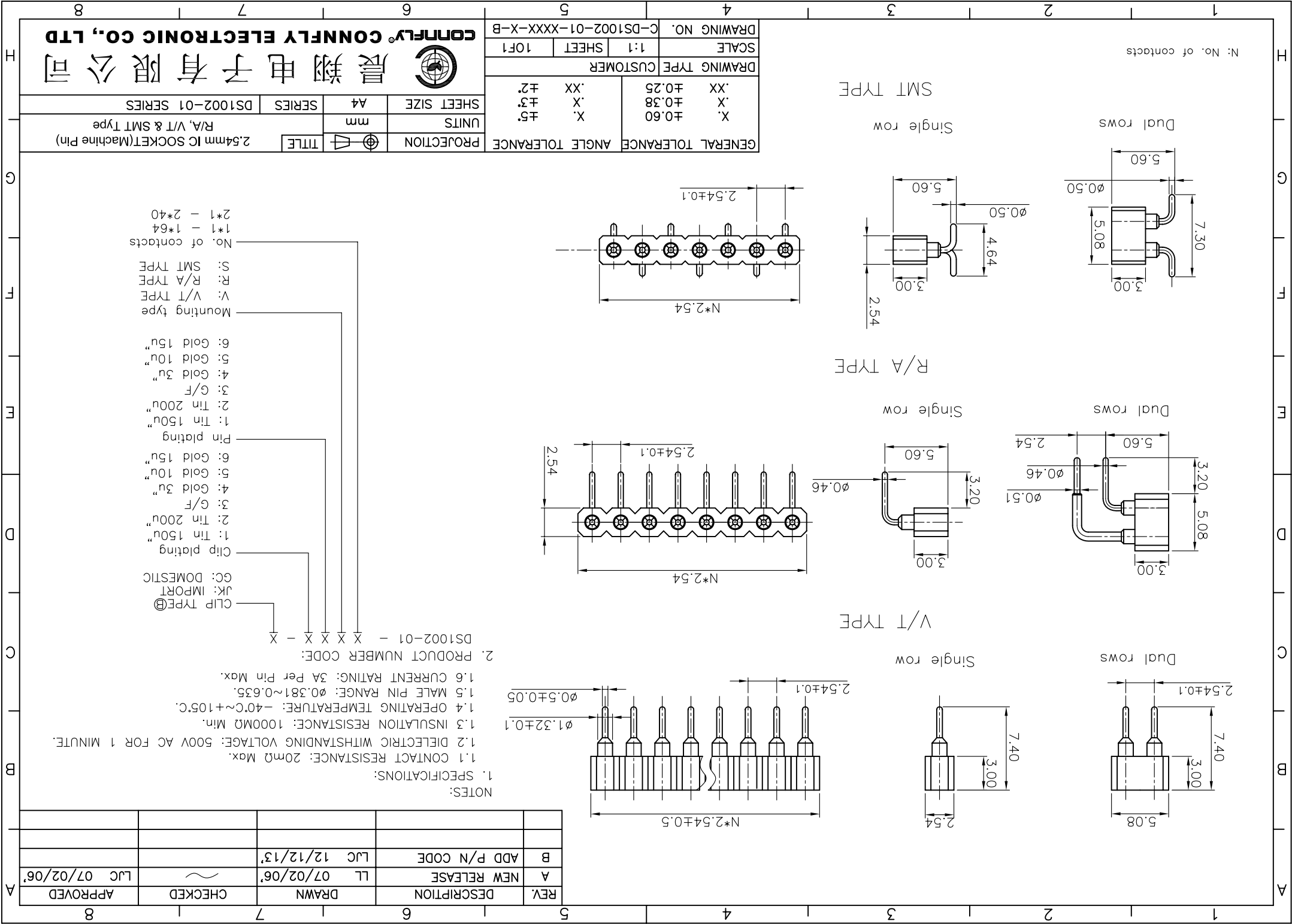


- CLIP TYPE
- JK: IMPORT
- GC: DOMESTIC
- Clip plating
- 1: Tin 150"
- 2: Tin 200u"
- 3: C/F
- 4: Gold 3u"
- 5: Gold 10u"
- 6: Gold 15u"
- Pin plating
- 1: Tin 150"
- 2: Tin 200u"
- 3: C/F
- 4: Gold 3u"
- 5: Gold 10u"
- 6: Gold 15u"
- Mounting type
- V: V/T TYPE
- R: R/A TYPE
- S: SMT TYPE
- No. of contacts
- 1\*1 - 1\*64
- 2\*1 - 2\*40

2. PRODUCT NUMBER CODE:

- 1.1 CONTACT RESISTANCE: 20mΩ Max.
- 1.2 DIELECTRIC WITHSTANDING VOLTAGE: 500V AC FOR 1 MINUTE.
- 1.3 INSULATION RESISTANCE: 1000MΩ Min.
- 1.4 OPERATING TEMPERATURE: -40C~+105C.
- 1.5 MALE PIN RANGE: 0.381~0.635.
- 1.6 CURRENT RATING: 3A Per Pin Max.

REV.	DESCRIPTION	DRAWN	CHECKED	APPROVED
A	NEW RELEASE	LL	07/02/06'	LJC 07/02/06'
B	ADD P/N CODE	LJC	12/12/13'	



## X-ON Electronics

Largest Supplier of Electrical and Electronic Components

*Click to view similar products for [IC & Component Sockets](#) category:*

*Click to view products by [Connfly](#) manufacturer:*

Other Similar products are found below :

[714-43-102-31-012000](#) [0066-3-17-15-30-14-02-0](#) [0134-0-15-15-32-27-04-0](#) [614-DG5](#) [6527-0-00-15-00-00-03-0](#) [670](#) [672](#) [673](#) [712-93-120-41-001000](#) [714-93-104-31-018000](#) [8059-4G1-LF](#) [807-22-001-10-001101](#) [807-22-001-10-003101](#) [807-22-001-10-004101](#) [807-22-001-10-006101](#) [807-22-001-30-011101](#) [807-22-001-30-012101](#) [807-22-001-30-013101](#) [807-22-001-30-014101](#) [8-1437531-4](#) [8150-6P10](#) [833-93-034-10-001000](#) [835-43-014-10-001000](#) [851-41-006-10-001000](#) [851-43-008-20-001000](#) [851-43-014-20-001000](#) [851-93-006-20-001000](#) [851-93-010-20-001000](#) [852-10-026-10-001000](#) [853-43-020-10-001000](#) [86.010.0053.0](#) [116-43-306-41-003000](#) [116-43-308-41-007000](#) [116-87-308-41-007101](#) [PX-68LCC](#) [PX-84LCC](#) [121-13-318-41-001000](#) [121-13-320-41-001000](#) [121-13-308-41-001000](#) [123-43-314-41-801000](#) [123-43-420-41-001000](#) [123-43-636-41-001000](#) [123-87-320-41-001101](#) [122-13-316-41-001000](#) [123-13-624-41-001000](#) [123-43-306-41-001000](#) [123-43-322-41-801000](#) [123-43-428-41-001000](#) [123-43-624-41-001000](#) [12-3513-11](#)