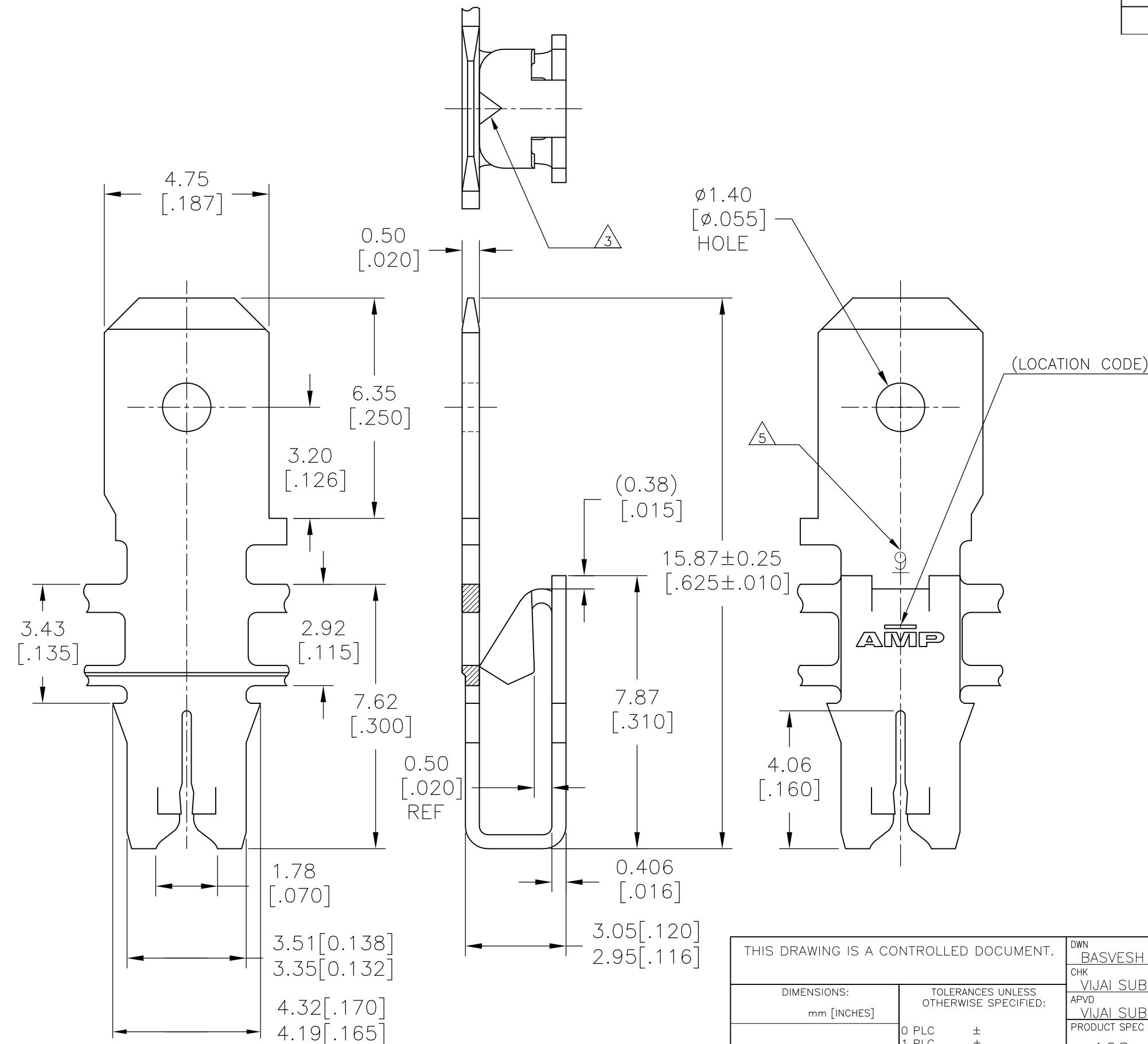


THIS DRAWING IS UNPUBLISHED. RELEASED FOR PUBLICATION - F .
 © COPYRIGHT - TE CONNECTIVITY ALL RIGHTS RESERVED.

REVISIONS				
P	LTR	DESCRIPTION	DATE	APVD
	A	INITIAL PRODUCTION RELEASE	21SEP2017	SV



- 1 CONTINUOUS STRIP ON REELS WITH TERMINALS LOCATED ON 5.59±0.08 CENTERS.
- 2 SLOT ACCEPTS A SINGLE OR DOUBLE WIRE ONLY
COPPER WIRE RANGE 0.38-0.50mm [#27-#24] AWG
ALUMINUM WIRE RANGE 0.45-0.50mm [#25-#24] AWG
- 3 POKE-IN ACCEPTS A 0.5~0.8mm² (#20~#18)AWG SOLID OR FUSED STRANDED LEAD WIRE. BUT POKE-IN TAB IS NOT APPLICABLE.
- 4 AFTER INSERTION INTO PLASTIC HOLDER TAB PORTION MUST BE BENT OVER 45° TO 90° OR POTTED-IN TO PREVENT PULL-OUT WHEN MATING RECEPTACLE IS DISCONNECTED.
- 5 IDENTIFICATION NUMBER 9 FOR MAGNET WIRE SLOT SIZE.
- 6 APPLICABLE RECEPTACLE CONT: 187 SERIES POSITIVE LOCK EX, 187 SERIES FASTON.
*WHEN RECEPTACLE MATE WITH 187 TAB, MUST ATTEND NO DAMAGE TO MAG-MATE TERMINAL.
- 7 EITHER PART WILL ACCEPT THE POKE IN MATING OR 187 RECEPTACLE MATING.

POKE-IN TAB NOT APPLICABLE	TIN PLATED	2825382-1
MATING TO POKE IN	FINISH	PART NUMBER

THIS DRAWING IS A CONTROLLED DOCUMENT.

DIMENSIONS: mm [INCHES]	TOLERANCES UNLESS OTHERWISE SPECIFIED:
	0 PLC ±
	1 PLC ± -
	2 PLC ± 0.20[.008]
	3 PLC ±
	4 PLC ±
	ANGLES ±
	FINISH ±
MATERIAL BRASS	SEE TABLE

TABLE 1	
187 SERIES POSITIVE LOCK EX	STRAIGHT TYPE
	FLAG TYPE
	173722-1
	173723-1
	173724-X
	173725-X
	175019-1

DWN	14NOV2016
BASVESH WARAD	
CHK	14NOV2016
VIJAI SUBRAMANIAN	
APVD	14NOV2016
VIJAI SUBRAMANIAN	
PRODUCT SPEC	
108-2012	
APPLICATION SPEC	
114-2046	
WEIGHT	0.00

TE Connectivity		NAME	
		TAB, POKE-IN / .187 COMBINATION, 300 SERIES MAG-MATE	
SIZE	CAGE CODE	DRAWING NO	RESTRICTED TO
A3	00779	C-2825382	-
CUSTOMER DRAWING		SCALE	SHEET
		8:1	1 OF 1
		REV	A

X-ON Electronics

Largest Supplier of Electrical and Electronic Components

Click to view similar products for [Terminals](#) category:

Click to view products by [TE Connectivity](#) manufacturer:

Other Similar products are found below :

[HT-13-10](#) [71M-250-32-NB](#) [01-2065-1-0216](#) [00581P0075](#) [M10-10RX](#) [M10BCK](#) [60205-1](#) [604200-1](#) [60598-1-CUT-TAPE](#) [60617-1-C](#) [60873-1](#) [M14-516R/SK](#) [M14-6RSX](#) [M18-10FLX](#) [M18-8FBX](#) [M18-8R/LX](#) [M18BCK](#) [61314-6-C](#) [61-S](#) [61-SN-A](#) [62-NBM-A](#) [63-S](#) [640179-1](#) [640917-2-CUT-TAPE](#) [6501550002](#) [66107-2-C](#) [696683-1](#) [696834-1](#) [696861-1](#) [696931-1](#) [696999-1](#) [M8-516RK](#) [M86700006](#) [MA250DMFMX-A](#) [701-2007](#) [701-2307](#) [701-7761-03](#) [70F-110-32-PB](#) [718-N-A](#) [71M-187-20-NBL](#) [71M-250-32-NBL](#) [72F-187-20-NBL](#) [72M-250-32-NBL](#) [7310](#) [73F-250-32](#) [73F-250-32-NBL](#) [73F-250-32-NL](#) [F14-10C](#) [F-1M](#) [751-250](#)