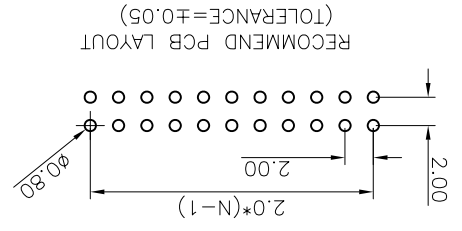
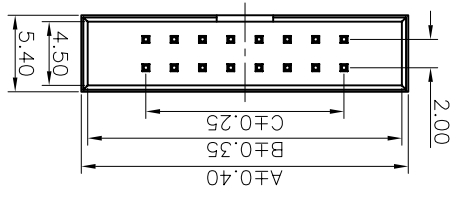
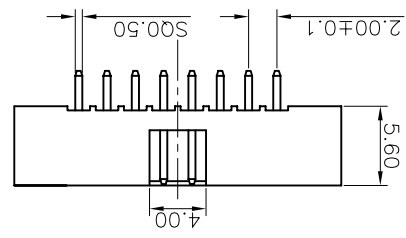
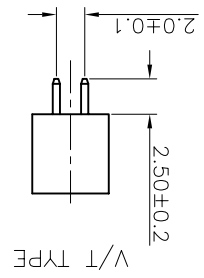
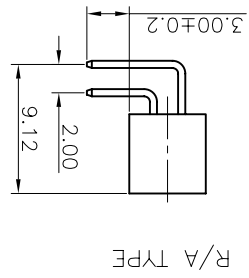
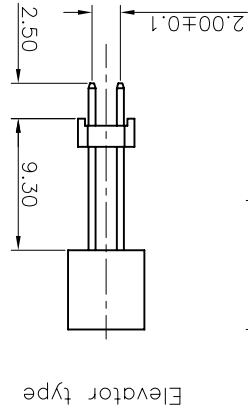
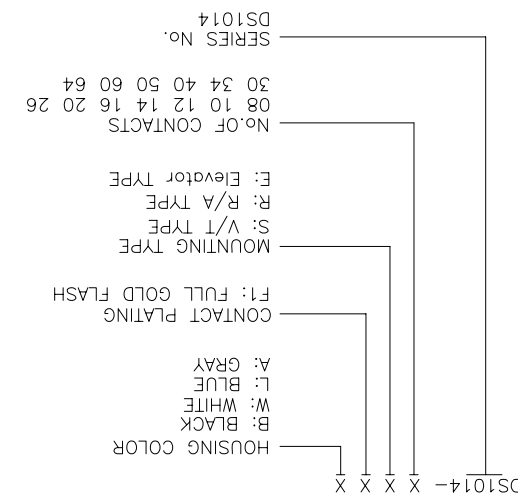


PROJECTION		TITLE	BOX HEADER PITCH 2.00mm
UNITS	mm	SHEET SIZE	A4
SERIES	DS1014	SERIES	DS1014 SERIES

GENERAL TOLERANCE	X. ±0.60	X. ±0.38	X. ±0.25
ANGLE TOLERANCE	X. ±5.	X. ±3.	.XX ±2.
DRAWING TYPE	CUSTOMER		
SCALE	1:1		
SHEET	1 OF 1		
DRAWING NO.	C-DS1014-XXXX		

REV.	DESCRIPTION	DRAWN	CHECKED	APPROVED
A	NEW RELEASE	LJH 04/27/05		

- NOTES:
1. MATERIAL
 1.1 INSULATOR: THERMOPLASTIC (UL 94V-0).
 1.2 CONTACT: COPPER ALLOY.
 2. SPECIFICATION
 2.1 TEMPERATURE: -40°C ~ +105°C.
 2.2 CONTACT RESISTANCE: 20mΩ max. (initial).
 2.3 INSULATION RESISTANCE: 1000MΩ min.
 2.4 DIELECTRIC WITHSTANDING VOLTAGE: AC 500V PER MINUTE.
 3. PART NUMBER: DS1014
 4. PRODUCT NUMBER CODE: DS1014-X X X X

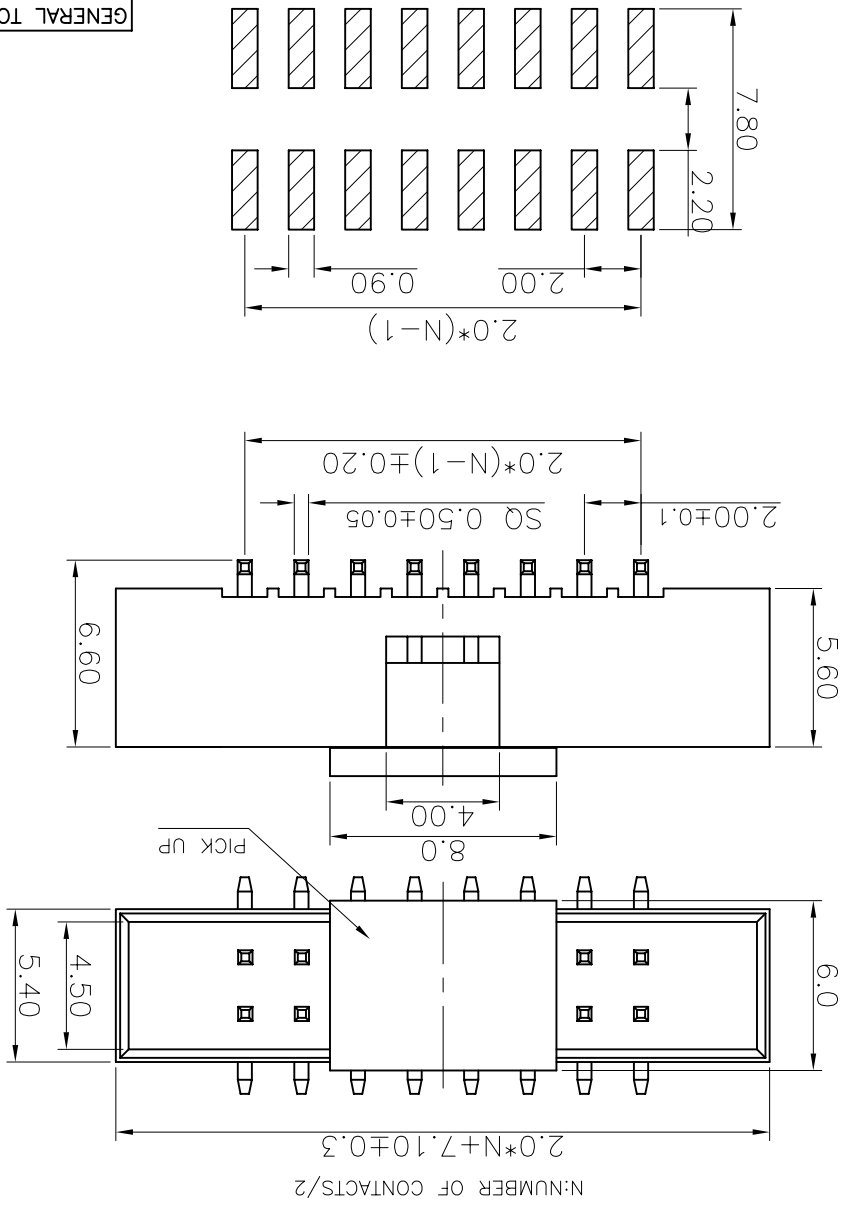
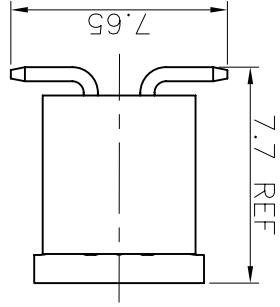


REV.	DESCRIPTION	DRAWN	CHECKED	APPROVED
A	NEW RELEASE	YCH 09/11/23	~	

NOTES:

- MATERIAL
1.1 INSULATOR: THERMOPLASTIC (UL 94V-0).
1.2 CONTACT: COPPER ALLOY.
- SPECIFICATION
2.1 TEMPERATURE: $-40^{\circ}\text{C} \sim +105^{\circ}\text{C}$.
2.2 CONTACT RESISTANCE: $20\text{m}\Omega$ max. (initial).
2.3 INSULATION RESISTANCE: $1000\text{M}\Omega$ min.
2.4 DIELECTRIC WITHSTANDING VOLTAGE: AC 500V PER MINUTE.
- PART NUMBER: DS1014
4. PRODUCT NUMBER CODE: DS1014-X X X X X X X X X X

- PACKAGING TYPE
- T: TRAY
- R: TAPE ON REEL
- B: TUBE
- PICK UP SUPPORT
- S: W/ PICK UP
- X: W/O PICK UP
- HOUSING COLOR
- B: BLACK
- W: WHITE
- L: BLUE
- A: GRAY
- CONTACT PLATING
- F1: FULL GOLD FLASH
- MOUNTING TYPE
- M: SMT TYPE
- NO. OF CONTACTS
- 08 10 12 14 16 20 26
- 30 34 40 50 60 64
- SERIES No. DS1014



RECOMMEND PCB LAYOUT
(TOLERANCE=±0.05)

GENERAL TOLERANCE ANGLE TOLERANCE

X.	±0.60	X.	±5.
.X	±0.38	.X	±3.
.XX	±0.25	.XX	±2.

DRAWING TYPE CUSTOMER

SCALE 1:1 SHEET 1 OF 1
DRAWING NO. C-DS1014-XMXXXX



晨翔电子有限公司
CONFLY CONNLY ELECTRONIC CO., LTD

TITLE	PROJECTION	UNITS	SHEET SIZE	SERIES	BOX HEADER PITCH 2.00mm SMT TYPE
		mm	A4	DS1014 SERIES	

8 7 6 5 4 3 2 1

8 7 6 5 4 3 2 1

H G F E D C B A

A B C D E F G H

X-ON Electronics

Largest Supplier of Electrical and Electronic Components

Click to view similar products for [AC Power Entry Modules](#) category:

Click to view products by [Connfly](#) manufacturer:

Other Similar products are found below :

[0098.0050](#) [6-1609987-9](#) [6167.0002](#) [7-6609955-2](#) [FN389-4-22](#) [FN9233ER-12-06](#) [FN9233S1-10-06](#) [FN9233S1-8-06](#) [FN9233S1B-8-06](#)
[FN9233S1R-1-06](#) [FN9233S1R-12-06](#) [FN9233SB-1-06](#) [FN9233SB-12-06](#) [FN9233SB-8-06](#) [FN9233SR-10-06](#) [FN9233SR-3-06](#) [FN9244B-15-06](#)
[HI](#) [FN9244EB-3-06](#) [FN9244EB-8-06](#) [FN9244ER-15-06](#) [FN9244ER-8-06](#) [FN9244ES1-8-06](#) [FN9244ESB-8-06](#) [FN9244EU-6-06](#)
[FN9244R-12-06](#) [FN9244R-3-07](#) [FN9244R-8-06](#) [FN9244S1-10-06](#) [FN9244S1-12-06](#) [FN9244S1-3-06](#) [FN9244S1B-6-06](#) [FN9244S1R-3-06](#)
[FN9244S-6-06](#) [FN9244SB-10-06](#) [FN9244SB-6-06](#) [FN9244SB-8-06](#) [FN9244SR-10-06](#) [FN9244SR-6-06](#) [FN9244U-3-06](#) [FN9244U-8-06](#)
[FN9260A-6-06](#) [PE00SSSXB](#) [Fuse-H-EUR-1](#) [Fuse-H-USA-1](#) [PM00XD000](#) [PS0SSDBX0](#) [PS0SXSH3B](#) [A-0701-HT-H](#) [RAPC3FG](#) [15EJMS8](#)