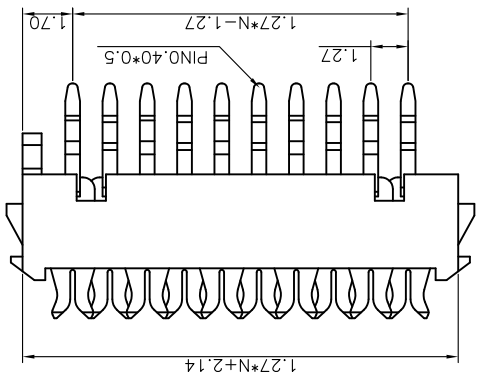
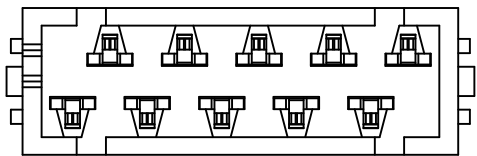
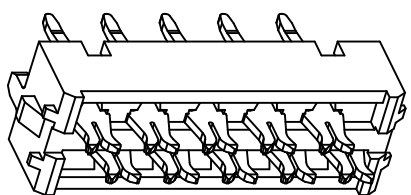
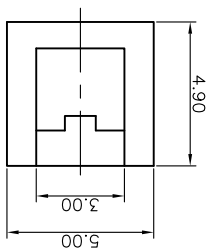
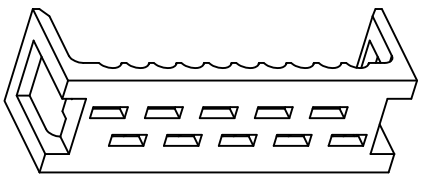
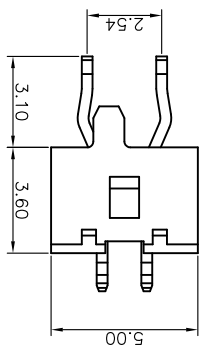
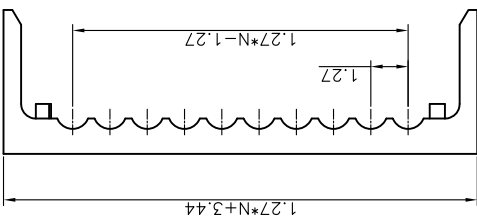
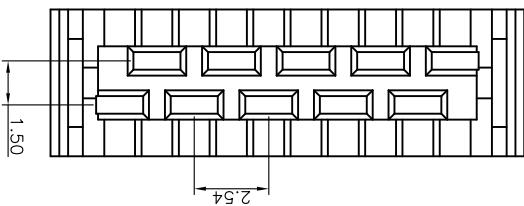


HOUSING



COVER



- 20 24
- 12 14 16 18
- 04 06 08 10
- NO. OF CONTACTS
- HOUSING COLOR
- R:RED
- 8: FULL GOLD FLASH
- 6: FULL TIN
- 2: NICKEL+GOLD FLASH
- CONTACT PLATING

3. PRODUCT NUMBER CODE: DS1015-02-X X X

PER MINUTE.

- 2.1 TEMPERATURE RANGE:-40°C~+105°C.
- 2.2 CONTACT RESISTANCE:30mΩ max.
- 2.3 INSULATION RESISTANCE:1000MΩ min.
- 2.4 DIELECTRIC WITHSTANDING VOLTAGE:AC 500V

2. SPECIFICATION

- 1.1 INSULATOR:THERMOPLASTIC(UL 94V-0).
- 1.2 CONTACT: COPPER ALLOY.

1. MATERIAL

NOTES:

DRAWING NO. C-DS1015-02-XXX	
SCALE 1:1	SHEET 1 OF 1
DRAWING TYPE CUSTOMER	
GENERAL TOLERANCE X ±0.60	ANGLE TOLERANCE X ±5.
XX ±0.25	.XX ±2.
X ±0.38	.X ±3.

晨翔电子有限公司
CONNLY CONNLY ELECTRONIC CO., LTD

UNITS mm	SHEET SIZE A4	SERIES DS1015-02 SERIES
PROJECTION	TITLE	PADDEL BOARD CONNECTOR
MICRO MATCH		

REV.	DESCRIPTION	DRAWN	CHECKED	APPROVED
A	NEW RELEASE	YCH 03/11/11'		

X-ON Electronics

Largest Supplier of Electrical and Electronic Components

Click to view similar products for [Headers & Wire Housings](#) category:

Click to view products by [Connfly](#) manufacturer:

Other Similar products are found below :

[95000-104TRLF](#) [10135584-644402LF](#) [DF62W-EP2022PCA](#) [95000-106TRLF](#) [DF62W-2022SCA](#) [DF62W-EP2022PC](#) [2203348](#) [DF62W-2022SC](#) [1084018](#) [1029039](#) [1084017](#) [802-10-012-10-002000](#) [1112640](#) [1112639](#) [891-007-9SS-BST1T](#) [000-34000](#) [0008550134](#) [0009482033](#) [0009507031](#) [57102-F02-18ULF](#) [57102-S06-03LF](#) [57202-S52-04LF](#) [PCN6-15S-2.5E](#) [0039019024](#) [58102-G61-06LF](#) [582553-1](#) [0009485154](#) [0009508121](#) [0022285053](#) [0050291907](#) [018731A](#) [LY20-4P-DT1-P1E-BR](#) [02.125.8002.8](#) [60101931](#) [60598-1 \(Cut Strip\)](#) [M1625-3R/100](#) [61062-3](#) [61082-181009](#) [CSU011177004](#) [636-1427](#) [638009-1](#) [641938-9](#) [641991-4](#) [644168-1](#) [644827-2](#) [647662-1](#) [65039-019ELF](#) [65692-001LF](#) [65781-018](#) [65781-047](#)