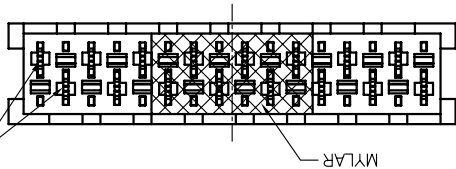
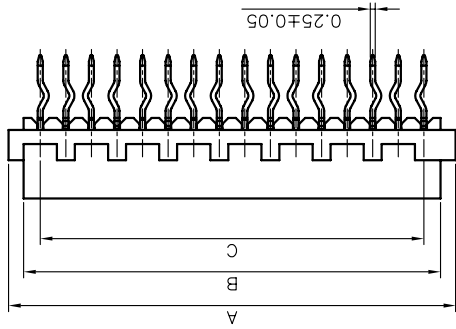
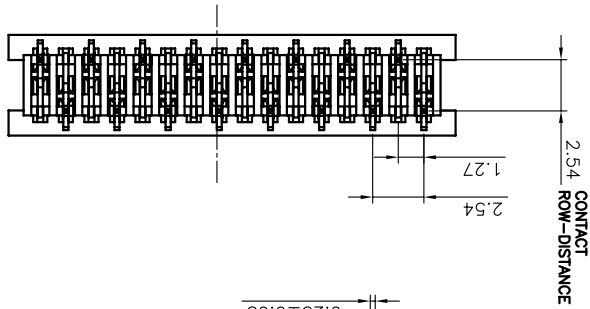
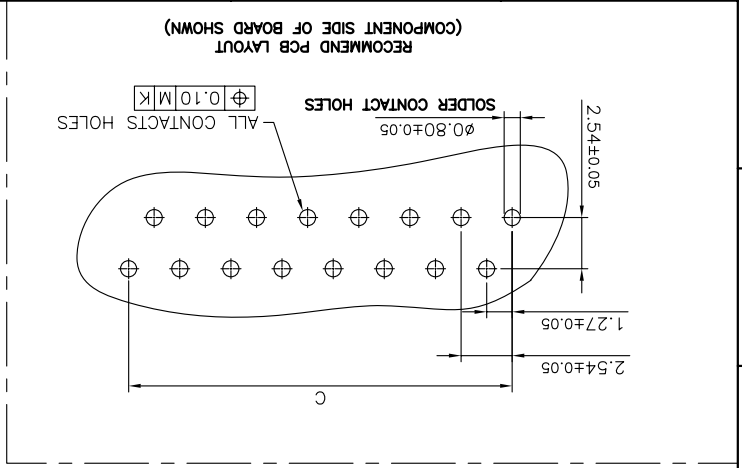


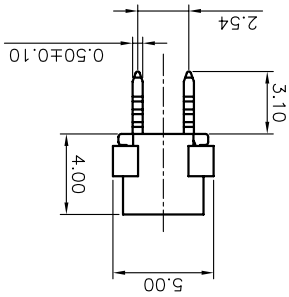


PROJECTION TITLE
UNITS mm
SHEET SIZE A4
SERIES DS1015-04 SERIES
MICRO MATCH FEMALE
VERTICAL THROUGH HOLE TYPE

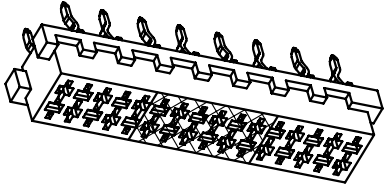
GENERAL TOLERANCE	X. ±0.60	X. ±0.38	.XX ±0.25
ANGLE TOLERANCE	X. ±5.	.X ±3.	.XX ±2.
DRAWING TYPE	CUSTOMER		
SCALE	1:1	SHEET	1 OF 1
DRAWING NO.	C-DS1015-04-XXX-A		



POSITIONS	DIM A	DIM B	DIM C
4	6.96	5.46	3.81
6	9.50	8.00	6.35
8	12.04	10.54	8.89
10	14.58	13.08	11.43
12	17.12	15.62	13.97
14	19.66	18.16	16.51
16	22.20	20.70	19.05
18	24.74	23.24	21.59
20	27.28	25.78	24.13
22	29.82	28.32	26.67
24	32.36	30.86	29.21



- NOTES:
1. MATERIAL: 1.1 INSULATOR: THERMOPLASTIC (UL 94V-0).
1.2 CONTACT: 0.25t COPPER ALLOY.
 2. SPECIFICATION: 2.1 TEMPERATURE RANGE: $-40^{\circ}\text{C} \sim +105^{\circ}\text{C}$.
2.2 CONTACT RESISTANCE: $30\text{m}\Omega$ max.
2.3 INSULATION RESISTANCE: $1000\text{M}\Omega$ min.
2.4 DIELECTRIC WITHSTANDING VOLTAGE: AC 500V PER MINUTE.
 3. PRODUCT NUMBER CODE: DS1015-04 - X X X X X X X X X X
 - PACKING TYPE: T: TRAY
 - MYLAR SUPPORT: X: W/O MYLAR
 - CONTACT PLATING: 6: FULL MATT TIN
 - HOUSING COLOR: R: RED
 - NO. OF CONTACTS: 16 18 20 22 24



REV.	DESCRIPTION	DRAWN	CHECKED	APPROVED
A	NEW RELEASE	DGQ 06/14/11'		

X-ON Electronics

Largest Supplier of Electrical and Electronic Components

Click to view similar products for [Headers & Wire Housings](#) category:

Click to view products by [Connfly](#) manufacturer:

Other Similar products are found below :

[95000-104TRLF](#) [10135584-644402LF](#) [DF62W-EP2022PCA](#) [95000-106TRLF](#) [DF62W-2022SCA](#) [DF62W-EP2022PC](#) [2203348](#) [DF62W-2022SC](#) [1084018](#) [1029039](#) [1084017](#) [802-10-012-10-002000](#) [1112640](#) [1112639](#) [891-007-9SS-BST1T](#) [000-34000](#) [0008550134](#) [0009482033](#) [0009507031](#) [57102-F02-18ULF](#) [57102-S06-03LF](#) [57202-S52-04LF](#) [PCN6-15S-2.5E](#) [0039019024](#) [58102-G61-06LF](#) [582553-1](#) [0009485154](#) [0009508121](#) [0022285053](#) [0050291907](#) [018731A](#) [LY20-4P-DT1-P1E-BR](#) [02.125.8002.8](#) [60101931](#) [60598-1 \(Cut Strip\)](#) [M1625-3R/100](#) [61062-3](#) [61082-181009](#) [CSU011177004](#) [636-1427](#) [638009-1](#) [641938-9](#) [641991-4](#) [644168-1](#) [644827-2](#) [647662-1](#) [65039-019ELF](#) [65692-001LF](#) [65781-018](#) [65781-047](#)