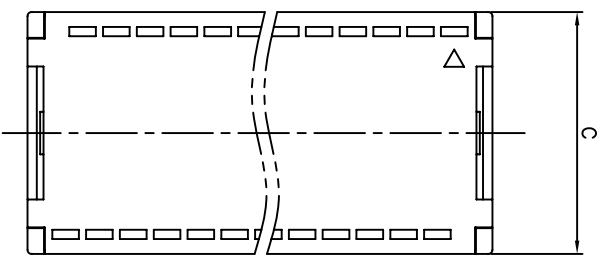
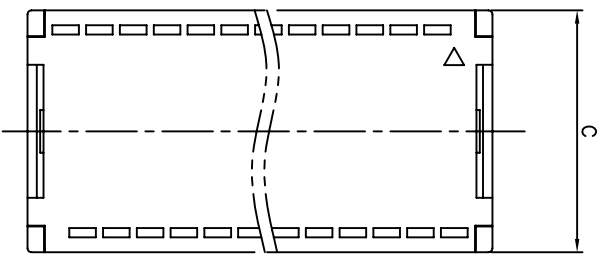
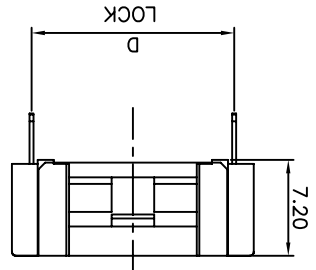
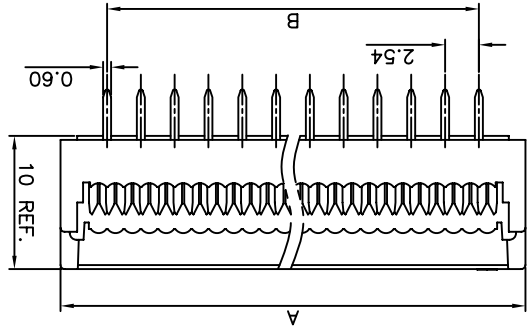
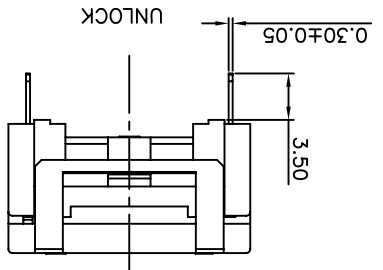
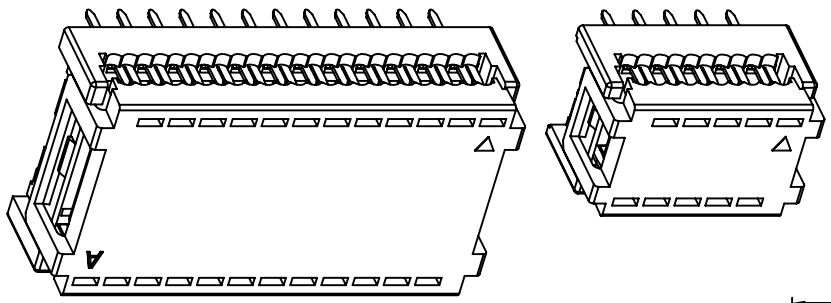
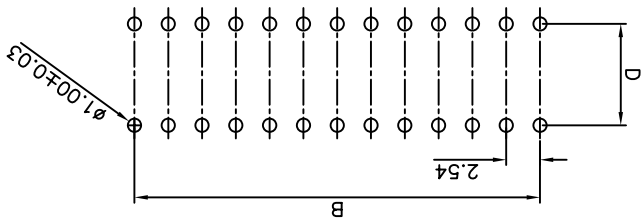


DRAWING NO. C-DS1019-XXXX		SCALE 1:1	
DRAWING TYPE CUSTOMER		SHEET 1 OF 1	
GENERAL TOLERANCE	X. ±0.60	X. ±0.38	X. ±0.25
ANGLE TOLERANCE	X. ±5.	X. ±3.	.XX ±2.

TITLE	PROJECTION	SHEET SIZE	SERIES
DIP PLUG CONNECTOR PITCH 2.54mm	mm	A4	DS1019 SERIES

RECOMMEND PCB LAYOUT (TOLERANCE=±0.05)



- CONTACT POSITIONS: A: A TYPE, B: B TYPE
- CONTACT PLATING: S: SELECTIVE GOLD FLASH, 8: FULL GOLD FLASH, 2: Gold + Nickel, T: Tin
- HOUSING COLOR: B: BLACK
- WIDTH: N: 7.62mm, W: 15.24mm
- NO. OF CONTACTS: 10 14 16 18 20 24 28 40

DS1019 - X X X X X X X X X X  
3. PRODUCT NUMBER CODE:

Positions	A	B	C	D
40	55.26	48.26	18.18	15.24
28	40.02	33.02	18.18	15.24
24	34.94	27.94	18.18	15.24
20	29.86	22.86	10.60	7.62
18	27.32	20.32	10.60	7.62
16	24.78	17.78	10.60	7.62
14	22.24	15.24	10.60	7.62
10	17.16	10.16	10.60	7.62

Table A:

- NOTES:
- MATERIAL: 1.1 INSULATOR: THERMOPLASTIC (UL 94V-0), 1.2 CONTACT: COPPER ALLOY.
  - SPECIFICATION: 2.1 STORAGE TEMPERATURE: -40~+105°C, 2.2 CONTACT RESISTANCE: 20mΩ max. (initial), 2.3 INSULATION RESISTANCE: 1000MΩ min., 2.4 DIELECTRIC WITHSTANDING VOLTAGE: AC 500V PER MINUTE.

REV.	A	DESCRIPTION	NEW RELEASE	DATE	LJC 05/19/07	CHECKED	APPROVED

## X-ON Electronics

Largest Supplier of Electrical and Electronic Components

*Click to view similar products for [Headers & Wire Housings](#) category:*

*Click to view products by [Connfly](#) manufacturer:*

Other Similar products are found below :

[95000-104TRLF](#) [10135584-644402LF](#) [DF62W-EP2022PCA](#) [95000-106TRLF](#) [DF62W-2022SCA](#) [DF62W-EP2022PC](#) [2203348](#) [DF62W-2022SC](#) [1084018](#) [1029039](#) [1084017](#) [802-10-012-10-002000](#) [1112640](#) [1112639](#) [891-007-9SS-BST1T](#) [000-34000](#) [0008550134](#) [0009482033](#) [0009507031](#) [57102-F02-18ULF](#) [57102-S06-03LF](#) [57202-S52-04LF](#) [PCN6-15S-2.5E](#) [0039019024](#) [58102-G61-06LF](#) [582553-1](#) [0009485154](#) [0009508121](#) [0022285053](#) [0050291907](#) [018731A](#) [LY20-4P-DT1-P1E-BR](#) [02.125.8002.8](#) [60101931](#) [60598-1 \(Cut Strip\)](#) [M1625-3R/100](#) [61062-3](#) [61082-181009](#) [CSU011177004](#) [636-1427](#) [638009-1](#) [641938-9](#) [641991-4](#) [644168-1](#) [644827-2](#) [647662-1](#) [65039-019ELF](#) [65692-001LF](#) [65781-018](#) [65781-047](#)