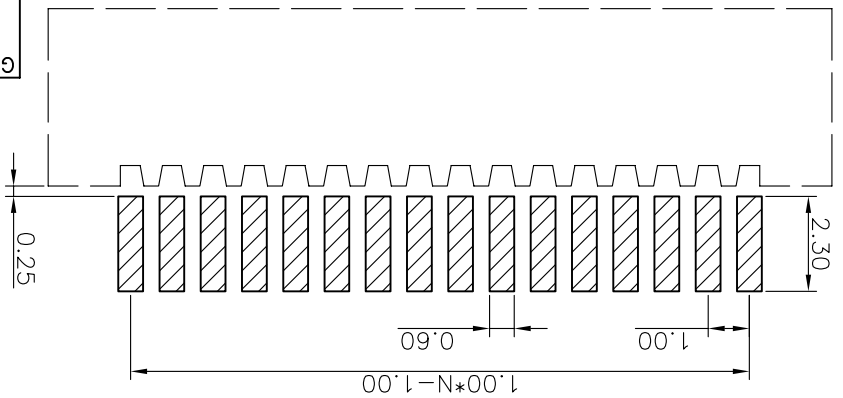
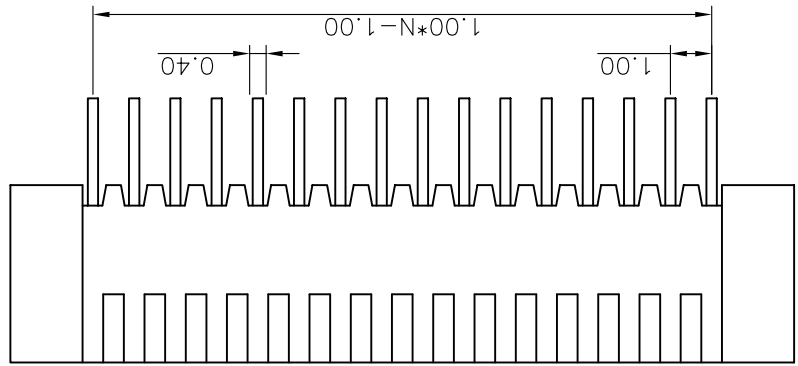
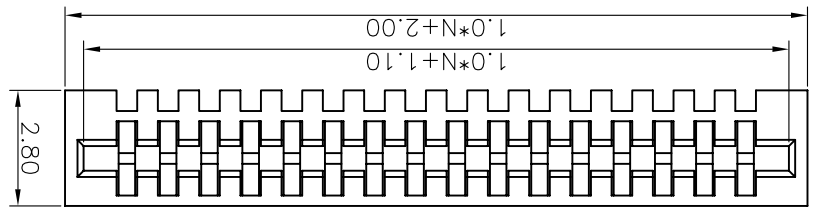
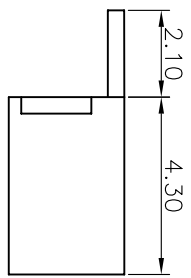


RECOMMEND PCB LAYOUT
(TOLERANCE=±0.05)

DRAWING NO. C-DS1020-06-XXX		DRAWING TYPE CUSTOMER	
SCALE 1:1	SHEET 1 OF 1		
GENERAL TOLERANCE	ANGLE TOLERANCE	X. ±0.60	X. ±0.38
		.XX ±0.25	.XX ±0.25
		X. ±5.	X. ±3.
		.XX ±2.	.XX ±2.

PROJECTION		UNITS mm	SHEET SIZE A4	SERIES DS1020-06 SERIES
TITLE		1.00mm FPC CONNECTOR R/A SMT TYPE		
DRAWING NO. C-DS1020-06-XXX		SCALE 1:1		
DRAWING TYPE CUSTOMER		SHEET 1 OF 1		
GENERAL TOLERANCE		ANGLE TOLERANCE		

- NOTES:
1. MATERIAL 1.1 INSULATOR:THERMOPLASTIC(UL 94V-0). 1.2 CONTACT: COPPER ALLOY.
 2. SPECIFICATION 2.1 TEMPERATURE RANGE:-45~+110°C. 2.2 CONTACT RESISTANCE:20mΩ max. 2.3 INSULATION RESISTANCE:100MΩ min. 2.4 DIELECTRIC WITHSTANDING VOLTAGE:AC 100V PER MINUTE.
 3. PART NUMBER: DS1020-06
 4. PRODUCT NUMBER CODE: DS1020-06-X X X
- CONTACT PLATING T1: TIN
HOUSING COLOR B:BLACK
NO. OF CONTACTS 02~36



REV. A	DESCRIPTION NEW RELEASE	DRAWN YCH 09/04/08	CHECKED	APPROVED

X-ON Electronics

Largest Supplier of Electrical and Electronic Components

Click to view similar products for [FFC & FPC Connectors](#) category:

Click to view products by [Connfly](#) manufacturer:

Other Similar products are found below :

[HFW11R-1STE1H1LF](#) [FH29B-100S-0.2SHW\(99\)](#) [FA5S008HP1](#) [FH29B-120S-0.2SHW\(99\)](#) [FH29B-80S-0.2SHW\(99\)](#) [FHS-16](#) [FPH-2022G](#)
[52610-1075](#) [52610-1275](#) [52610-1934](#) [XF3M\(1\)-1415-1B-R100](#) [501864-3091-TR225](#) [0525594033](#) [086210010340800](#) [086222026001800](#)
[52271-2869-CUT-TAPE](#) [62674-201121DLF](#) [62684-36210E9ALF](#) [52610-1675](#) [52746-1671-TR250](#) [10051922-2810EHLF](#) [6-520415-9](#)
[BD021-09A-A1-0350-0200-0550-LD](#) [SFV6R-1STE9HLF](#) [XF3M-2915-1B-R100](#) [1658549-1](#) [62674-221121ALF](#) [46214008010800](#)
[046298003000883](#) [151660622](#) [842-816-2630-035](#) [AYF530665TA](#) [AYF351525](#) [046296011930846+](#) [AYF352325A](#) [046254020000800+](#)
[FH19C-13S-0.5SH\(99\)](#) [FH39J-51S-0.3SHW\(99\)](#) [AYF355125A](#) [AYF530365TA](#) [FH29B-44S-0.2SHW\(99\)](#) [SFW5R-2STAE9LF](#) [AYF351125A](#)
[AYF350725A](#) [62684-502100AHLF](#) [FH39-61S-0.3SHW\(99\)](#) [AYF414035A](#) [10064555-172520HLF](#) [AYF212335A](#) [504754-2500](#)