

REV.	DESCRIPTION	DRAWN	CHECKED	APPROVED
A	NEW RELEASE	LJH 05/08/05'	~	LJC 05/08/05'
B	图面绘制错误	LL 08/11/06'	~	LJC 08/11/06'
C	增加规格尺寸	LL 01/15/07'		

NOTES:

- MATERIAL&FINISHES
1.1 INSULATOR:THERMOPLASTIC(UL 94V-0).
1.2 CONTACT MATERIAL: COPPER ALLOY.

- SPECIFICATION
2.1 CURRENT RATING:1.5 Amp.
2.2 INSULATION RESISTANCE:1000MΩ Min.
2.3 DIELECTRIC WITHSTANDING:600VAC.
2.4 CONTACT RESISTANCE:20mΩ Max.
2.5 OPERATING TEMPERATURE:-40°C TO +105°C.
3. PART NUMBER: DS1025-06
4. PRODUCT NUMBER CODE:
DS1025-06 - X X X X X X X X X X

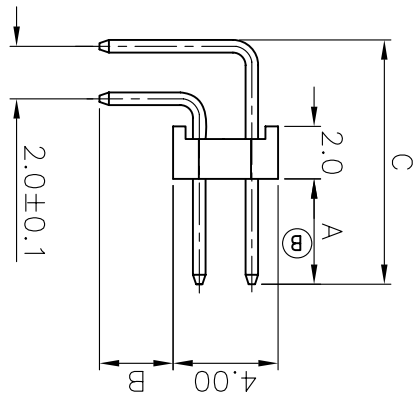
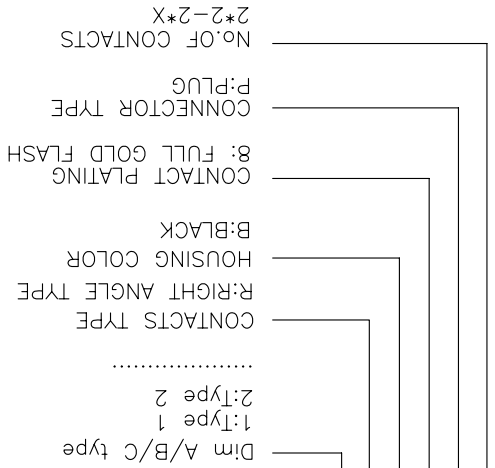
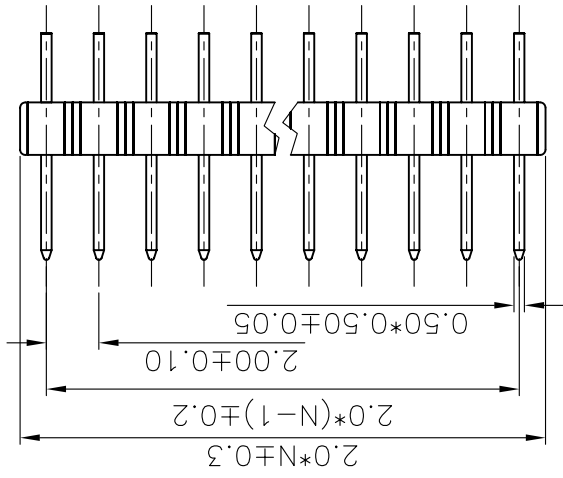
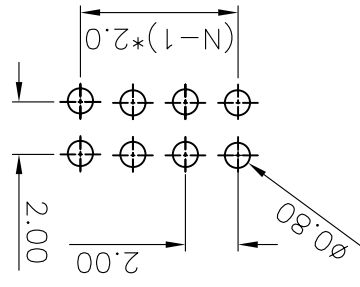


TABLE A

TYPE	Dimension			Pin Length
	A	B	C	
1	4.00	2.80	9.30	10.70
2	6.00	2.80	11.30	12.70
3	2.42	5.00	12.70	16.10
4	3.70	3.00	9.00	10.30
5	3.20	3.00	9.20	10.50
6	8.00	2.80	13.30	14.70
7				18.70
8				
9				
10				



A&B: CUSTOMER LENGTH AVAILABLE
N: NUMBER OF CONTACTS/2



RECOMMEND PCB LAYOUT
(TOLERANCE=±0.05)

PROJECTION TITLE

UNITS mm

SHEET SIZE A4

SERIES DS1025-06 SERIES

DUAL ROW RIGHT ANGLE

晨翔电子有限公司 CONNLY CONNLY ELECTRONIC CO., LTD

GENERAL TOLERANCE X ±0.60
X ±0.38
XX ±0.25

ANGLE TOLERANCE X ±5'
X ±3'
XX ±2'

DRAWING TYPE CUSTOMER

SCALE 1:1 SHEET 1 OF 1

DRAWING NO. C-DS1025-06-XXXXX

X-ON Electronics

Largest Supplier of Electrical and Electronic Components

Click to view similar products for [Headers & Wire Housings](#) category:

Click to view products by [Connfly](#) manufacturer:

Other Similar products are found below :

[95000-104TRLF](#) [10135584-644402LF](#) [DF62W-EP2022PCA](#) [95000-106TRLF](#) [DF62W-2022SCA](#) [DF62W-EP2022PC](#) [2203348](#) [DF62W-2022SC](#) [1084018](#) [1029039](#) [1084017](#) [802-10-012-10-002000](#) [1112640](#) [1112639](#) [891-007-9SS-BST1T](#) [000-34000](#) [0008550134](#) [0009482033](#) [0009507031](#) [57102-F02-18ULF](#) [57102-S06-03LF](#) [57202-S52-04LF](#) [PCN6-15S-2.5E](#) [0039019024](#) [58102-G61-06LF](#) [582553-1](#) [0009485154](#) [0009508121](#) [0022285053](#) [0050291907](#) [018731A](#) [LY20-4P-DT1-P1E-BR](#) [02.125.8002.8](#) [60101931](#) [60598-1 \(Cut Strip\)](#) [M1625-3R/100](#) [61062-3](#) [61082-181009](#) [CSU011177004](#) [636-1427](#) [638009-1](#) [641938-9](#) [641991-4](#) [644168-1](#) [644827-2](#) [647662-1](#) [65039-019ELF](#) [65692-001LF](#) [65781-018](#) [65781-047](#)