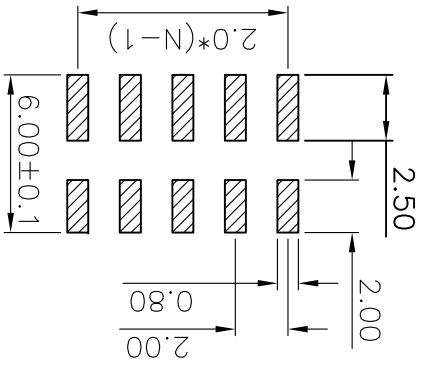
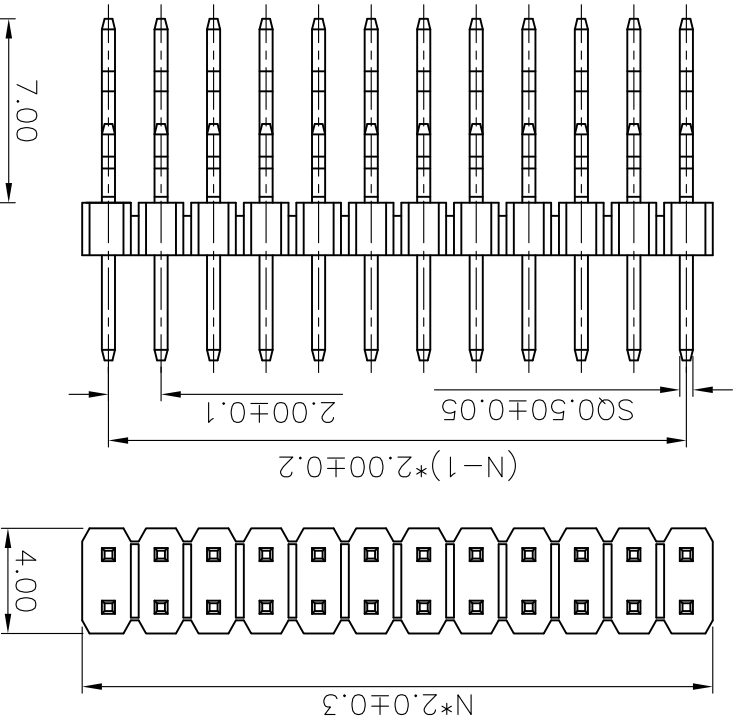


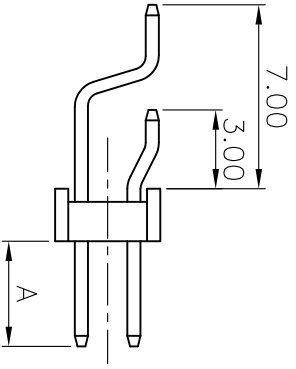
RECOMMEND PCB LAYOUT(TOLERANCE=±0.05)



N: NUMBER OF CONTACTS/2



TYPE	A
1	4.00
2	5.50
3	
4	
5	



GENERAL TOLERANCE ANGLE TOLERANCE

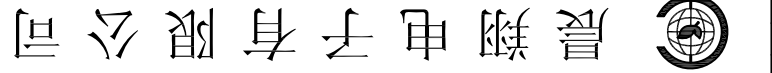
±5°	X	±0.60
±3°	.X	±0.38
±2°	.XX	±0.25

DRAWING TYPE CUSTOMER SCALE 1:1 SHEET 1 OF 1

DRAWING NO. C-DS1025-07-XXXXXX-X-C

PROJECTION TITLE DUAL ROW RIGHT ANGLE S.M.T

UNITS mm SHEET SIZE A4 SERIES DS1025-07 SERIES



晨翔电子有限公司 CONNLY CONNLY ELECTRONIC CO., LTD

NOTES:

- 1. MATERIAL&FINISHES
1.1 INSULATOR:THERMOPLASTIC(UL 94V-0).
- 1.2 CONTACT MATERIAL: COPPER ALLOY.

2. SPECIFICATION

- 2.1 CURRENT RATING:1.5 Amp.
- 2.2 INSULATION RESISTANCE:1000MΩ Min.
- 2.3 DIELECTRIC WITHSTANDING:600VAC.
- 2.4 CONTACT RESISTANCE:20mΩ Max.
- 2.5 OPERATING TEMPERATURE:-40°C TO +105°C.
- 3. PART NUMBER: DS1025-07
- 4. PRODUCT NUMBER CODE: DS1025-07 - X X X X X X X X X X

Ⓢ

PLATING LEVEL(FOR GOLD ONLY) 3A:LEVEL 3A B:LEVEL B
DIM A TYPE 1: TYPE 1 2: TYPE 2
CONTACTS TYPE S:SMT TYPE

HOUSING COLOR B:BLACK
CONTACT PLATING 8: FULL GOLD FLASH

CONNECTOR TYPE P:PLUG
NO.OF CONTACTS 2*2-2*X

SERIES No. DS1025-07

REV.	DESCRIPTION	DRAWN	CHECKED	APPROVED
A	NEW RELEASE	LJH 05/08/05'	~	LJC 05/08/05'
B	ADD P/N CODE	JLZ 10/28/14'	~	LJC 10/28/14'
C	HOUSING CHANGE	JLZ 07/06/15'	~	

X-ON Electronics

Largest Supplier of Electrical and Electronic Components

Click to view similar products for [Headers & Wire Housings](#) category:

Click to view products by [Connfly](#) manufacturer:

Other Similar products are found below :

[95000-104TRLF](#) [10135584-644402LF](#) [DF62W-EP2022PCA](#) [95000-106TRLF](#) [DF62W-2022SCA](#) [DF62W-EP2022PC](#) [2203348](#) [DF62W-2022SC](#) [1084018](#) [1029039](#) [1084017](#) [802-10-012-10-002000](#) [1112640](#) [1112639](#) [891-007-9SS-BST1T](#) [000-34000](#) [0008550134](#) [0009482033](#) [0009507031](#) [57102-F02-18ULF](#) [57102-S06-03LF](#) [57202-S52-04LF](#) [PCN6-15S-2.5E](#) [0039019024](#) [58102-G61-06LF](#) [582553-1](#) [0009485154](#) [0009508121](#) [0022285053](#) [0050291907](#) [018731A](#) [LY20-4P-DT1-P1E-BR](#) [02.125.8002.8](#) [60101931](#) [60598-1 \(Cut Strip\)](#) [M1625-3R/100](#) [61062-3](#) [61082-181009](#) [CSU011177004](#) [636-1427](#) [638009-1](#) [641938-9](#) [641991-4](#) [644168-1](#) [644827-2](#) [647662-1](#) [65039-019ELF](#) [65692-001LF](#) [65781-018](#) [65781-047](#)