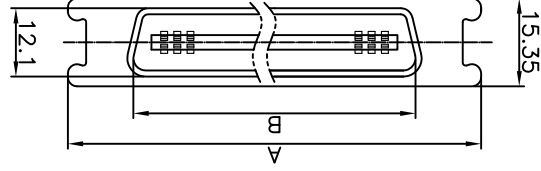


NOTES:

1. SPECIFICATION

- Current rating: 3A.
- Dielectric Strength: 500V For 1 minute
- Insulation Resistance: 1000MΩ Min.at 500V DC
- Contact resistance: 50mΩ max.
- Temperature range: -40°C to +105°C

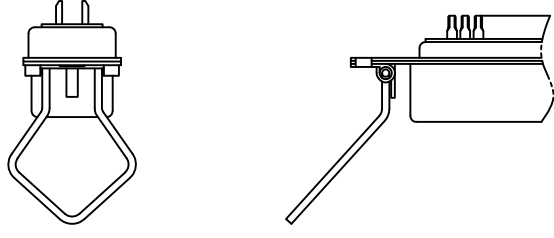
Male SERIES



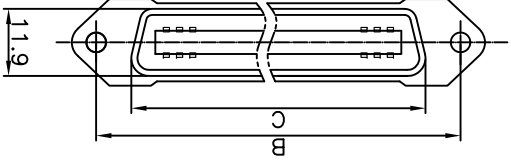
Male dimensions

Positions	A	B
14	38.5	25.6
24	49.3	36.3
36	62.1	49.3
50	77.4	64.4

WITH LATCH TYPE

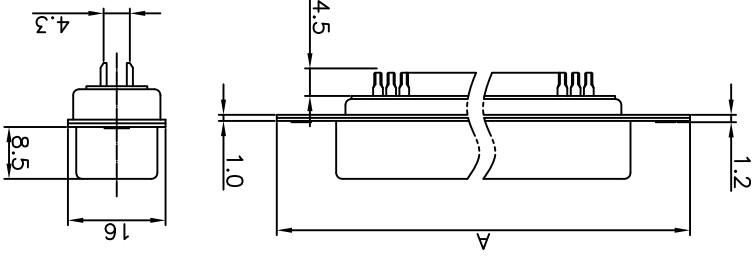


Female SERIES



Female dimensions

Positions	A	B	C
14	43.9	36.0	25.2
24	54.7	46.8	36.0
36	67.7	59.7	48.9
50	82.8	74.9	64.1



2. MATERIAL

- Insulator: thermoplastic(UL 94V-0)
- Contact: copper alloy
- Shell: steel

3. PRODUCT NUMBER CODE:

DS1039-01 - X X X X X

Latch Support

S: W/ Latch

X: W/O Latch

Contact plating

0: Selective gold flash

1: Selective 10u" gold

3: Selective 30u" gold

Housing color

L: Blue

W: White

B: Black

Connector Type

M: male

F: female

No. of Positions

14 24 36 50

REV.	DESCRIPTION	DRAWN	CHECKED	APPROVED
A	NEW RELEASE	LJC 01/16/09		

GENERAL TOLERANCE

X. ±0.60
X. ±0.38
XX ±0.25

ANGLE TOLERANCE
X. ±5°
X. ±3°
XX ±2°

DRAWING TYPE

CUSTOMER

SCALE

1:1

SHEET 1 OF 1
C-DS1039-01-XXXXX

晨翔电子有限公司
CONNFY CONNFY ELECTRONIC CO., LTD



SHEET SIZE

A4

SERIES

DS1039-01

PROJECTION



TITLE

CENTRONIC CONNECTOR
SOLDER TYPE

UNITS

mm

CENTRONIC CONNECTOR
SOLDER TYPE

X-ON Electronics

Largest Supplier of Electrical and Electronic Components

Click to view similar products for [Standard Card Edge Connectors](#) category:

Click to view products by [Connfly](#) manufacturer:

Other Similar products are found below :

[6565204-6](#) [PKC-156](#) [1437274-4](#) [147889-1](#) [1489165-4](#) [EBT156-12B1X](#) [EBT15622B2X](#) [EBT156-22R2W](#) [1-582587-1](#) [1-582589-1](#) [2-6437275-9](#) [284-0102-12100](#) [306022901000000](#) [307-012-502-202](#) [307-024-526-201](#) [307-056-520-300](#) [307-080-526-208](#) [1926088-2](#) [245-062-520-350](#) [287-0032-12101](#) [306-010-500-112](#) [306-028-525-102](#) [306-240-318](#) [307-036-502-202](#) [307-036-521-301](#) [307-072-526-202](#) [345-060-559-303](#) [368-004-520-201](#) [392-008-559-201](#) [534671-1](#) [5-530501-5](#) [341-240-317](#) [345-029-520-300](#) [345-030-500-301](#) [345-044-500-300](#) [345-220-058](#) [346-240-318](#) [357-030-526-201](#) [387-012-523-300](#) [395-044-520-300](#) [395-100-524-300](#) [50-12B-10](#) [50-6SN-5](#) [09-07-2032](#) [10035388-106LF](#) [10035388-802LF](#) [10115859-011LF](#) [10122859-009LF](#) [101269333204245CLF](#) [10127905-B04B24BLF](#)