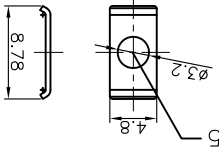




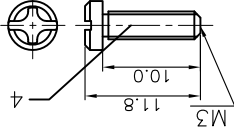
DRAWING NO. C-DS1046-09XXXX-C	
SCALE 1:1	SHEET 1 OF 1
DRAWING TYPE CUSTOMER	
X. ±0.60	.XX ±0.25
X. ±0.38	.X ±0.3
X. ±0.5	.XX ±0.2

GENERAL TOLERANCE	ANGLE TOLERANCE
UNITS mm	PROJECTION
SHEET SIZE A4	SERIES DS1046 SERIES
TITLE D-SUB 9pin Hood Chromium Plated	

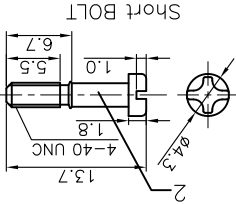
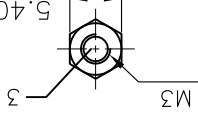
SMALL WASHER



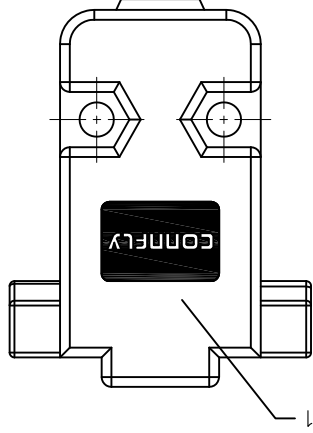
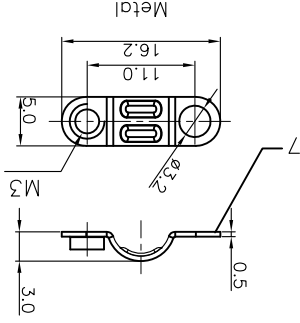
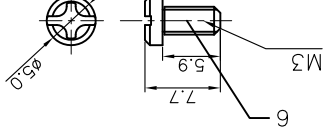
LONG SCREW



UNT t=2.3mm



SHORT SCREW



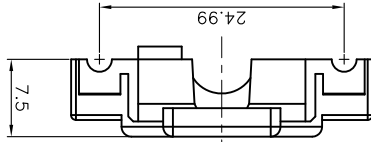
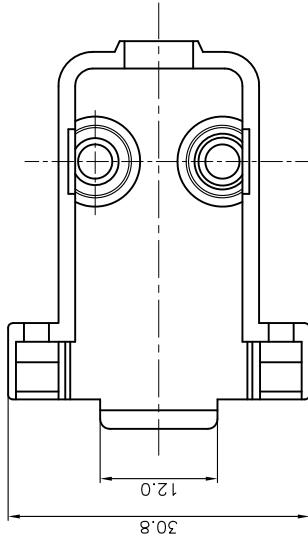
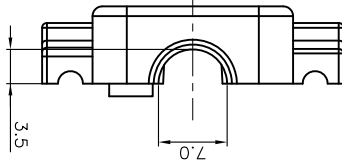
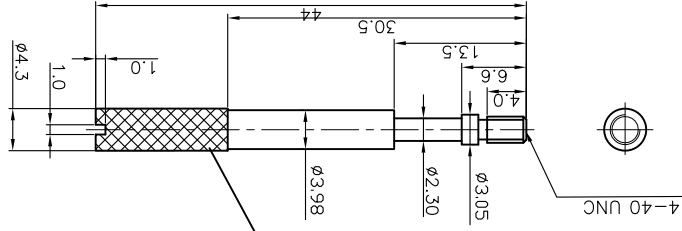
- Washer type ① 1: Metal
- Bolt type
- S: Short
- L: Long
- Packing type
- 1: Mix packing
- C: Chromium plating
- Cover Material
- Position 09: 9pin

1. PART NUMBER CODE: DS1046 - 09 X X X X

NOTES:

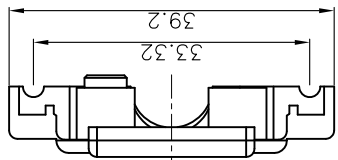
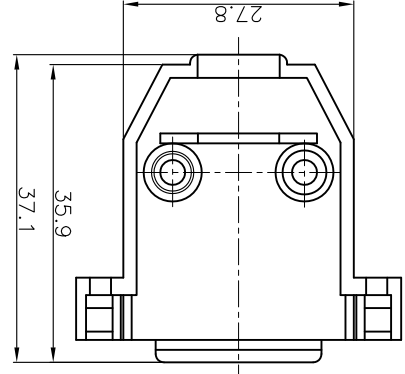
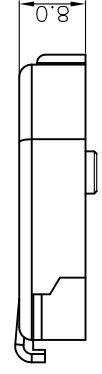
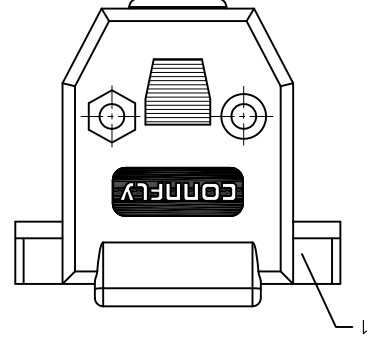
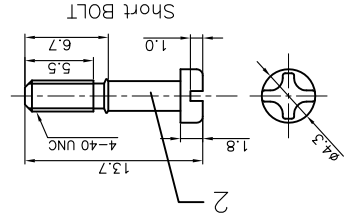
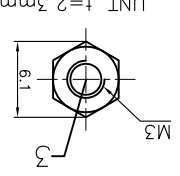
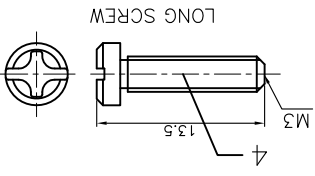
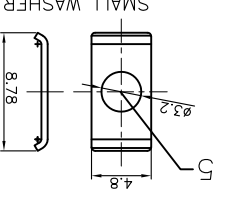
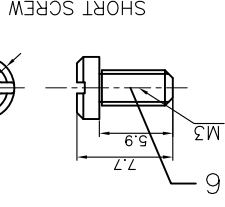
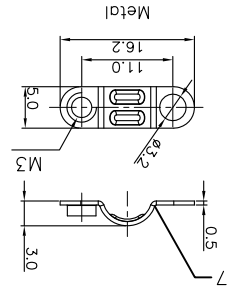
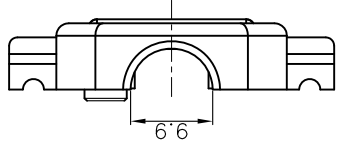
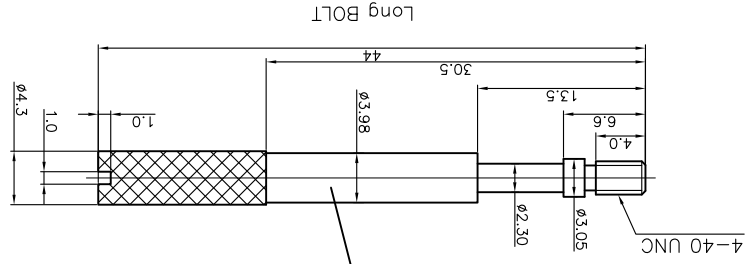
REV.	DESCRIPTION	DRAWN	CHECKED	APPROVED
A	NEW RELEASE	LJH 08/13/05'	~	LJC 08/13/05'
B	整理图面	YCH 09/13/07'	~	LJC 05/20/10'
C	改M3*12的螺钉为M3*10	YCH 08/30/10'	~	LJC 08/30/10'
D	MINUS P/N CODE	JLZ 12/16/14'	~	

ITEM		PART NAME	Q'ty	NOTES
BOM LIST				
1	2	PLASTIC HOOD	2	ABS
2.1	2	LONG BOLT	2	#4-40
2	2	SHORT BOLT	2	#4-40
3	2	NUT	2	M3
4	2	LONG SCREW	2	M3
5	2	SMALL WASHER	2	M3
6	2	SHORT SCREW	2	M3
7	2	METAL WASHER	2	M3

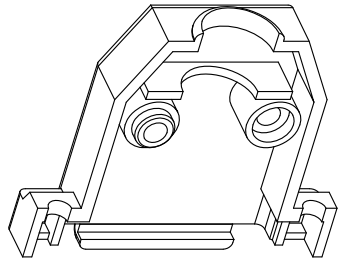


GENERAL TOLERANCE	X. ±0.60	DRAWING TYPE	CUSTOMER	
ANGLE TOLERANCE	X. ±5°		DRAWING NO. C-DS1046-15XXXX	
	X. ±0.38	SCALE	1:1	SHEET 1 OF 1
	X. ±0.25			

UNITS	mm	TITLE	D-SUB 15pin Hood Chromium Plated
SHEET SIZE	A4	SERIES	DS1046 SERIES



ITEM		PART NAME	Q'ty	NOTES
1		PLASTIC HOOD	2	ABS
2.1		LONG BOLT	2	#4-40
2.2		SHORT BOLT	2	#4-40
3		NUT	2	M3
4		LONG SCREW	2	M3
5		SMALL WASHER	2	
6		SHORT SCREW	2	M3
7		METAL WASHER	2	M3



- Washer type (C)
- 1: Metal
- Bolt type
- L: Long
- S: Short
- Packing type
- 1: Mix packing
- Cover Material
- C: Chromium plating
- Position
- 15: 15pin

1. PART NUMBER CODE: DS1046 - 15 X X X X

REV.	DESCRIPTION	DRAWN	CHECKED	APPROVED
A	NEW RELEASE	LJH 05/18/05'	~	LJC 05/18/05'
B	整理圖面	YCH 09/13/07'	~	LJC 09/13/07'
C	MINUS P/N CODE	JLZ 12/16/14'	~	

X-ON Electronics

Largest Supplier of Electrical and Electronic Components

Click to view similar products for [D-Sub Standard Connectors](#) category:

Click to view products by [Connfly](#) manufacturer:

Other Similar products are found below :

[DCM37S732N](#) [DAM15P500](#) [DEV09S364GTLF](#) [DEM09P032N](#) [DDM50P732N](#) [DAM15S332N](#) [173109-2218](#) [173109-2466](#) [173109-2436](#)
[173109-2435](#) [56F706-005-LI](#) [56F711-015](#) [015-0341-000](#) [015-0372-008](#) [015-8544-011](#) [017041-0005](#) [020419-0104](#) [012-0515-000](#) [012-9507-](#)
[034](#) [012-9507-114](#) [012-9534-001](#) [020745-0008](#) [609-25P](#) [M24308/2-23Z](#) [M243082310F](#) [M243082410F](#) [M243082411F](#) [M24308/4-21](#)
[CT1A18-11PSA206](#) [CT1N36-5SC](#) [CT2-16S-17PS](#) [CT2-20-15PCAU](#) [CT2-24-12PS](#) [CT2-24-28PSF127A206](#) [CT2-32-9PC](#) [CT6F9767-14-4-](#)
[14S-5PC](#) [CT6FA10SL-4PS](#) [CT7-18-10SC](#) [CT7-18-10SCAU](#) [CT7-18-12SCAU](#) [CT7-18-1PC](#) [CT7-18-1PCAU](#) [CT7-18-21SCAU](#) [M83513/01-](#)
[FC](#) [M83723/76W24619 L/C](#) [M85049/48-3-2F](#) [69001-865](#) [6STD09PCM99B70X](#) [6STD09SCM99B30X](#) [6STD09SCT99S40X](#)