

NOTES:

1. Insulation material: PVC
- Color: Grey
2. SPECIFICATION
 - Rating: 300V
 - Conductor Size: 28AWG Or 30AWG
 - Insulation resistance: 100MΩ/km min.
3. APPLICATION
 - Internal wiring of computers, electronic exchanges, measurement control devices, business machines, communication devices, and other electronic equipment.

| Number | Dimensions | | Max. conductor resistance DC 20°C |
|--------|------------|-------|-----------------------------------|
| | TP(mm) | W(mm) | |
| 10 | 9.00 | 10.00 | ±0.30 |
| 14 | 13.00 | 14.00 | ±0.30 |
| 16 | 15.00 | 16.00 | ±0.30 |
| 20 | 19.00 | 20.00 | ±0.30 |
| 24 | 23.00 | 24.00 | ±0.30 |
| 26 | 25.00 | 26.00 | ±0.30 |
| 30 | 29.00 | 30.00 | ±0.30 |
| 34 | 33.00 | 34.00 | ±0.40 |
| 40 | 39.00 | 40.00 | ±0.40 |
| 50 | 49.00 | 50.00 | ±0.40 |
| 60 | 59.00 | 60.00 | ±0.40 |
| 64 | 63.00 | 64.00 | ±0.40 |

φ0.100<0.397

φ0.127<0.237

4. Product Number Code DS1057-01 - X X X X X X X X X X

- Packing Specifications
- 30.5: 30.5m/reel
 - 76.5: 76.5m/reel
 - Edge mark
 - R: Red mark
 - F: Flower mark
 - Wire diameter
 - 1: φ0.100 (30AWG)
 - 2: φ0.127 (28AWG)
 - Wire AWG
 - 28: 28AWG
 - 30: 30AWG
 - Cable color
 - A: Gray
 - No. Of positions
 - 10: 10pin
 - 64: 64pin

| REV. | DESCRIPTION | DRAWN | CHECKED | APPROVED |
|------|-------------|--------------|---------|----------|
| A | NEW RELEASE | YCH 08/18/07 | | |
| | | | | |
| | | | | |

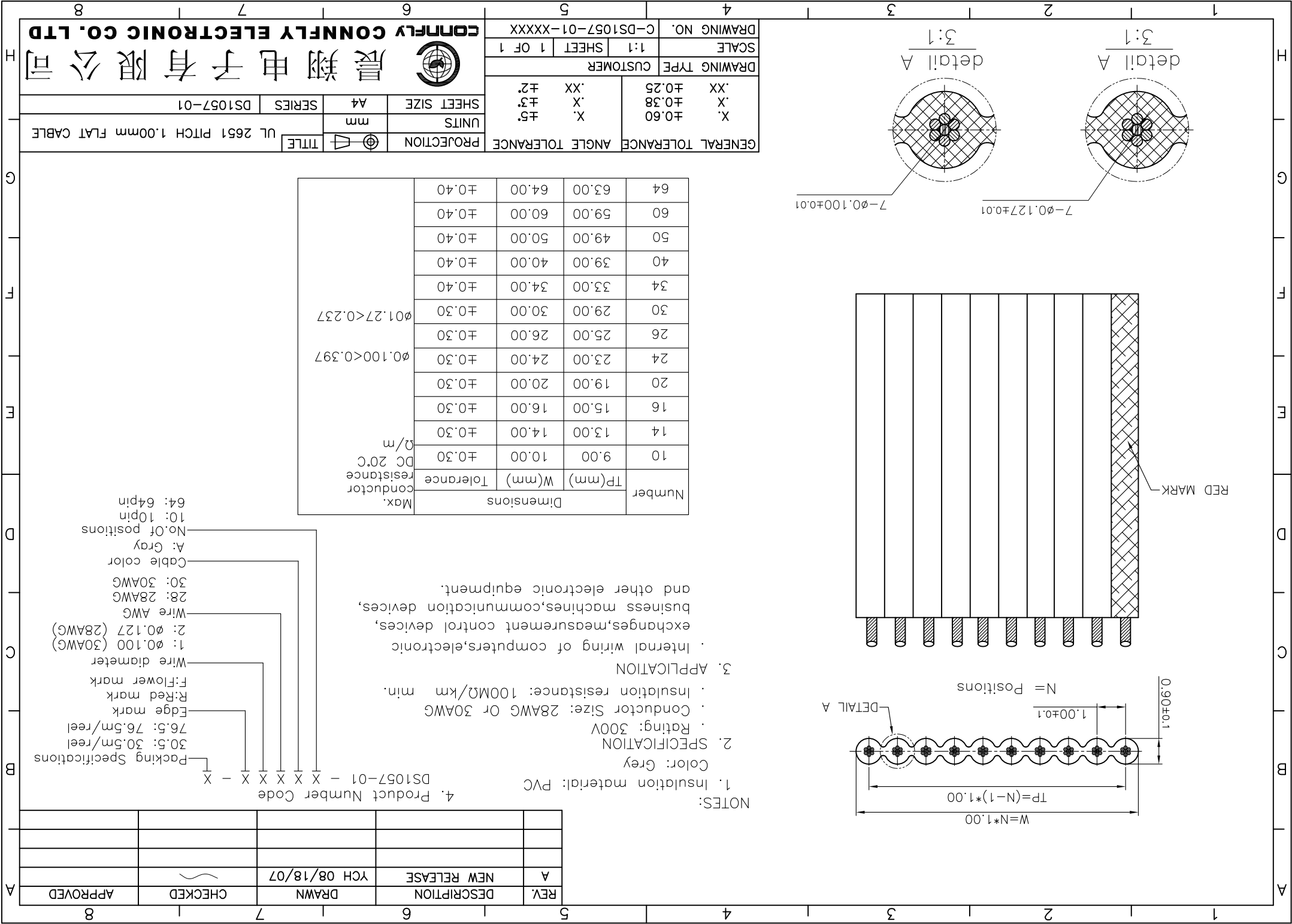
| | | | |
|-------------------|-------|-----------------|-----|
| GENERAL TOLERANCE | | ANGLE TOLERANCE | |
| X. | ±0.60 | X. | ±5. |
| .X | ±0.38 | .X | ±3. |
| .XX | ±0.25 | .XX | ±2. |

| | | |
|--------------|----------|--------------|
| DRAWING TYPE | CUSTOMER | |
| SCALE | 1:1 | SHEET 1 OF 1 |

DRAWING NO. C-DS1057-01-XXXXX


晨翔电子有限公司
CONNLY CONNLY ELECTRONIC CO., LTD

| | | | | | |
|-------|------------|-------|------------|-----------|---------------------------------|
| TITLE | PROJECTION | UNITS | SHEET SIZE | SERIES | UL 2651 PITCH 1.00mm FLAT CABLE |
| | | mm | A4 | DS1057-01 | |



X-ON Electronics

Largest Supplier of Electrical and Electronic Components

Click to view similar products for [DC Fans](#) category:

Click to view products by [Connfly](#) manufacturer:

Other Similar products are found below :

[614R](#) [6424/2HP-210](#) [8312R](#) [DV4118/2NP-183](#) [AFB0948HH-S687](#) [PFB0824DHE-8B72](#) [G2E085-AA05-10](#) [RD20S-4/210660](#) [4318/12T](#)
[4418HH](#) [AUB0912H-F00](#) [3412N/2ME](#) [K2E225-RA92-09](#) [4184N/2XR](#) [5214N2HH](#) [614J2HHPR-010](#) [8412NGL-12](#) [4114N/12HHR-297](#)
[4656](#) [ZWR-903](#) [4112N12GL-175](#) [KD2406PKB2.\(2\).GN](#) [AFB1248HHE](#) [AFB1212LE-F00](#) [FAN-SCH-1](#) [MF60151V1-1000U-G99](#)
[PF80252V1-1000U-G99](#) [PF92252V1-1000U-G99](#) [4112N/2H6P](#) [4114N/17-251](#) [6212NH](#) [622/2N](#) [712F-011](#) [8218J/2NP-181](#) [W1G180-AB47-](#)
[15](#) [FAA1-12038NBKW31-A](#) [6318N/2TDP](#) [6318N/2H3PU](#) [6318HU](#) [424JMU](#) [PMD1206PTVX-A.U.GN](#) [PF80251B2-000U-F99](#)
[EF40101BX-1000U-G99](#) [AD1224LB-A71GL](#) [9GA0924L4021](#) [9GA0924M4021](#) [9GA0924M4011](#) [9GA0824B20011](#) [9GA0812A2D0011](#)
[9GA0912M4D011](#) [9GA0924W4D01](#)