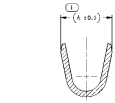
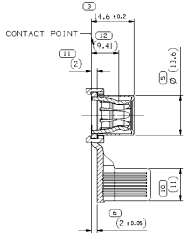
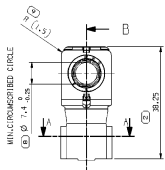


SYMBOL DEFINITION		MISSING SYMBOLS	
A DIMENSION WITHOUT AN INSPECTION REPORT SYMBOL (C) DOES NOT REQUIRE INSPECTION. IT MAY BE CONTROLLED ON THE INDIVIDUAL COMPONENT DRAWING.	TOTAL NO OF INSPECTIONS REQUIRED	NO MISSING SYMBOL NUMBER	
	12		
LAST USED	12		

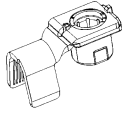
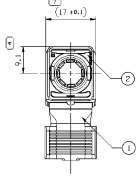
REVISION HISTORY			
NO	OR	DATE	DESCRIPTION
		CREATED TAXI DRAWING	



SECTION A-A



SECTION B-B



- NOTES:
- UNLESS OTHERWISE SPECIFIED AND/OR INDICATED: DIMENSIONS ARE TO FACE OF VIEW SHOWN AND AUTOMATICALLY ROUNDED BY COMPUTER FOR INSPECTION. SEE MATR. SPEC. FOR PRECISION DIMENSIONS. FOR ALL OTHER DIMENSIONS NOT SHOWN BUT REQUIRED FOR TOOL BUILD, SEE MATR. SPEC. FOR PRECISION TOOL PATH DATA.
 - PART HAS TO BE DELIVERED DEWATERED.
 - PART MUST BE WATERPROOF PACKING.
 - PART MUST BE FREE OF CRACKS.
 - ONLY RECOMMENDED CABLE ACC. TO LV12A-2. CABLE SIZE: 16/25/35/50 MM² PER BS7371. VALIDATED. ALL OTHER CABLE SUPPLIERS / CABLE SIZES MUST BE VALIDATED.

POS	PART NO	REV	DESCRIPTION	QTY	MATERIAL AND COLOR	DIM A	WEIGHT (g)
2	33395984	-	TERMINAL CAP, BLK	1	POLYAMIDE BLEND BLK	-	-
1	33383883	-	TERMINAL SPRING 90 DEGREE ASSY - 16/25mm²	1	-	-	-
B	35172741	O1	FEMALE TERMINAL ASSY. 17.2mm	-	-	13.6	15.181
2	35046068	-	TERMINAL CAP, GRN	1	POLYAMIDE BLEND GRN	-	-
1	33395956	-	TERMINAL SPRING 90 DEGREE ASSY - 35/50mm²	1	-	-	-
A	35172742	O1	FEMALE TERMINAL ASSY. 35/50 mm²	-	-	17.48	17.371

PROPERTY OF DELPHI CORPORATION
 THIS DRAWING IS THE PROPERTY OF DELPHI CORPORATION. IT IS TO BE USED ONLY FOR THE PURPOSES SPECIFIED HEREIN. IT IS NOT TO BE REPRODUCED OR TRANSMITTED IN ANY FORM OR BY ANY MEANS, ELECTRONIC OR MECHANICAL, INCLUDING PHOTOCOPYING, RECORDING, OR BY ANY INFORMATION STORAGE AND RETRIEVAL SYSTEM, WITHOUT EXPRESS WRITTEN PERMISSION FROM DELPHI CORPORATION.

CUSTOMER PART DRAWING

DATE: 12/11/18

BY: [Signature]

APPROVED: [Signature]

DELPHI
 GLOBAL ELECTRONIC ELECTRICAL ARCHITECTURE

DATE: 12/11/18
 BY: [Signature]
 APPROVED: [Signature]

33383884

TAXI ASM TERM SLV/PIN AG SEALED

PROPERTY OF DELPHI CORPORATION
 THIS DRAWING IS THE PROPERTY OF DELPHI CORPORATION. IT IS TO BE USED ONLY FOR THE PURPOSES SPECIFIED HEREIN. IT IS NOT TO BE REPRODUCED OR TRANSMITTED IN ANY FORM OR BY ANY MEANS, ELECTRONIC OR MECHANICAL, INCLUDING PHOTOCOPYING, RECORDING, OR BY ANY INFORMATION STORAGE AND RETRIEVAL SYSTEM, WITHOUT EXPRESS WRITTEN PERMISSION FROM DELPHI CORPORATION.

PROPERTY OF DELPHI CORPORATION

DATE: 12/11/18

BY: [Signature]

APPROVED: [Signature]

X-ON Electronics

Largest Supplier of Electrical and Electronic Components

Click to view similar products for [Automotive Connectors](#) category:

Click to view products by [Delphi](#) manufacturer:

Other Similar products are found below :

[003-018-000](#) [600858](#) [60403001](#) [60993906-B](#) [60993913-B](#) [629515004020001](#) [M902-2131](#) [M902-2161](#) [M902-2344](#) [72.330.1035.1](#)
[73.353.4028.0](#) [F118010](#) [F119300-B](#) [F132210](#) [F132210-B](#) [F166900](#) [F180100](#) [F258300](#) [F258300-B](#) [F294300-B](#) [F339100](#) [F339700](#) [F358300-](#)
[B](#) [F374110](#) [F407400](#) [F412210](#) [F427600](#) [F444110](#) [F487000](#) [F495100-B](#) [F500900-B](#) [F509500B-B](#) [770444-1](#) [776880-1](#) [827153-1](#) [881735-1](#)
[8N1515-32-24P](#) [9-1326727-8](#) [9-1326729-8](#) [925467-1](#) [925474-1](#) [928905-1](#) [936398-2](#) [964562-1](#) [964562-4](#) [964731-2](#) [965051-1](#) [968782-1](#)
[GT17SA-8DS-HU](#) [GT17VS-10DP-5.2CF](#)