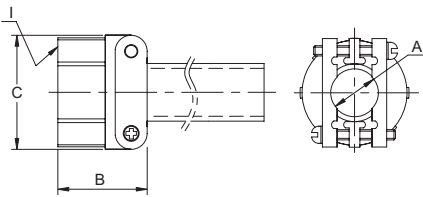


Amphenol MIL-C-5015 Connectors

MS/DS Series

Accessories Dimension

Cable Clamp
MS3057

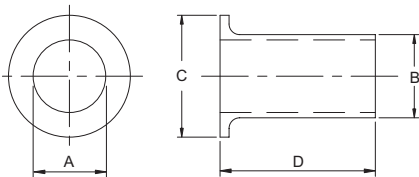


| Part Number | Size | Ø A ± 0.4 | B ± 0.8 | Ø C ± 0.8 | I Thread-2B |
|-------------|----------|--------------|------------|--------------|----------------|
| MS3057-4A | 10SL,12S | 5.6 | 20.3 | 23.3 | 5/8-24 NEF |
| MS3057-6A | 14S,14 | 7.9 | 22.5 | 25.9 | 3/4-20 NEF |
| MS3057-8A | 16S,16 | 11.1 | 24.4 | 28.9 | 7/8-20 NEF |
| MS3057-10A | 18 | 14.3 | 23.6 | 32.2 | 1-20 NEF |
| MS3057-12A | 20,22 | 15.9 | 23.6 | 37.8 | 1 3/16-18 NEF |
| MS3057-16A | 24,28 | 19.1 | 26.0 | 43.4 | 1 7/16-18 NEF |
| MS3057-20A | 32 | 23.8 | 27.7 | 52.1 | 1 3/4-18 NS |
| MS3057-24A | 36 | 31.8 | 29.2 | 57.3 | 2-18 NS |

MS3057 style cable clamp was designed for use with jacketed cable or wire protected by tubing.

Both clamping halves float maximum strain relief. For unjacketed cable or wires, use corresponding MS3420 telescoping bushing. To order clamp without bushing, add -1 to the P/N.

Telescoping Bushing
MS3420



| Part Number | Size | Ø A Max | Ø B Max | Ø C | D |
|-------------|----------|------------|------------|------|------|
| MS3420-4 | 10SL,12S | 5.6 | 7.7 | 12.8 | 69.9 |
| MS3420-6 | 14S,14 | 7.9 | 10.9 | 15.7 | 66.7 |
| MS3420-8 | 16S,16 | 11.1 | 14.0 | 18.9 | 63.5 |
| MS3420-10 | 18 | 14.3 | 15.6 | 22.6 | 60.3 |
| MS3420-12 | 20,22 | 15.9 | 18.8 | 27.5 | 57.2 |
| MS3420-16 | 24,28 | 19.1 | 23.6 | 33.4 | 54.0 |
| MS3420-20 | 32 | 23.8 | 31.5 | 40.6 | 50.8 |
| MS3420-24 | 36 | 31.8 | 34.7 | 46.9 | 47.6 |

Telescoping grand bushings (used with 3057 clamp) keep dirt, oil and moisture out of endbell.

Taping or wrapping wires is eliminated since bushing protects wires going thru clamp.

Combinations of bushing may be used to decrease cable entry diameter to improve sealing.

X-ON Electronics

Largest Supplier of Electrical and Electronic Components

Click to view similar products for [Circular MIL Spec Connector](#) category:

Click to view products by [Amphenol](#) manufacturer:

Other Similar products are found below :

[89075GULPR](#) [0025-262-542](#) [0025-264-3014](#) [58-570121-04S](#) [0134-213-1208](#) [0134-213-2209](#) [0025-258-000](#) [60-042022-07P](#) [60-042022-19P](#)
[60-042022-23P](#) [60-042217-10P](#) [0114-201-1278](#) [012-0467-000](#) [602GB06EG24-61SN](#) [0134-201-1207](#) [0134-213-1006](#) [6104-207-2302](#) [6104-](#)
[208-1902](#) [61-168211-04P](#) [61-168617-10P](#) [6131-202-19149P](#) [6131-204-21149P](#) [6131-208-13149P](#) [6131-209-17149P](#) [6131-210-11149P](#) [6131-](#)
[211-19149P](#) [6131-216-19149P](#) [6131-259-21149P](#) [6131-259-23149P](#) [6131-265-17149P](#) [6131-265-19149P](#) [CS3100A18-1P-472](#) [CS3100A-36-](#)
[77P](#) [CS3101A-16-55P](#) [CS3102A-10SL-55P](#) [CS3102A-14S-58P](#) [CS3102A-32-17P](#) [CS3102A32-25S](#) [CS3102C18-4P-472](#)
[CS3106A10SL3S004](#) [CS3106A-18-73S](#) [CS3108A-14S-52S](#) [CS3108A-28-51S](#) [6162-233-1277](#) [6162-324-1231](#) [M243082296Z](#)
[M2884010AC1S1](#) [CT0-24-10SC](#) [CT0M20-7PCAU](#) [M28840/17AC1G3](#)