

# 3.96 条形连接器 (3.96mm)

## 技术参数 TECHNICAL PARAMETER

间距(PITCH):3.96mm

极数(Poles):2--16

适用基板厚度(Applicable PC board thickness):1.6mm

额定电流(Current rating):5A,AC,DC

额定电压(Voltage rating):250V,AC,DC

工作温度(Working Temperature):-25°C~+85°C

耐压值(Withstand voltage ):1500V,AC/min

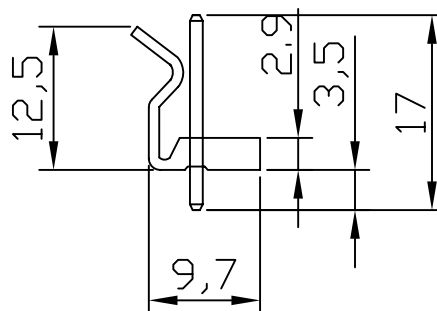
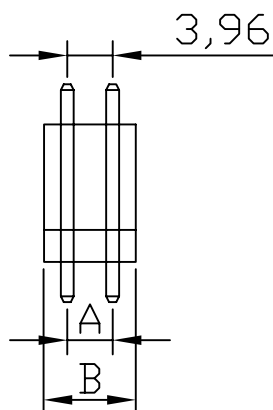
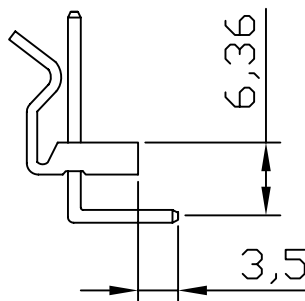
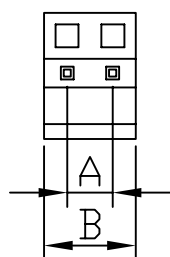
接触电阻(Contact resistance): $\leq 0.01 \Omega$

绝缘电阻(Insulation resistance): $\geq 1000M \Omega$

极数 Poles	编号 Part Number	尺寸 Dimension(mm)	
		A	B
2	3.96-2A(W/T)	3.96	8
3	3.96-3A(W/T)	7.92	12
4	3.96-4A(W/T)	11.88	16
5	3.96-5A(W/T)	15.84	20
6	3.96-6A(W/T)	19.80	24
7	3.96-7A(W/T)	23.76	28
8	3.96-8A(W/T)	27.72	32
9	3.96-9A(W/T)	31.68	36
10	3.96-10A(W/T)	35.64	40
11	3.96-11A(W/T)	39.60	44
12	3.96-12A(W/T)	43.56	48
13	3.96-13A(W/T)	47.52	52
14	3.96-14A(W/T)	51.48	56
15	3.96-15A(W/T)	55.44	60
16	3.96-16A(W/T)	59.40	64

## 材料 MATERIAL

基座(HOUSING):尼龙66UL94V-0(NYLON66 UL94V-0)  
 插针(PIN):黄铜(BRASS)表面镀纯锡(PURE TIN-PLATED)



## X-ON Electronics

Largest Supplier of Electrical and Electronic Components

*Click to view similar products for [Headers & Wire Housings](#) category:*

*Click to view products by [Boom](#) manufacturer:*

Other Similar products are found below :

[95000-104TRLF](#) [10135584-644402LF](#) [DF62W-EP2022PCA](#) [95000-106TRLF](#) [DF62W-2022SCA](#) [DF62W-EP2022PC](#) [2203348](#) [DF62W-2022SC](#) [1084018](#) [1029039](#) [1084017](#) [802-10-012-10-002000](#) [1112640](#) [1112639](#) [000-34000](#) [0009482033](#) [0009507031](#) [57102-S06-03LF](#) [57202-S52-04LF](#) [PCN6-15S-2.5E](#) [0039019024](#) [58102-G61-06LF](#) [582553-1](#) [0009485154](#) [0009508121](#) [0022285053](#) [0050291907](#) [018731A](#) [LY20-4P-DT1-P1E-BR](#) [02.125.8002.8](#) [60101931](#) [60598-1 \(Cut Strip\)](#) [M1625-3R/100](#) [61062-3](#) [61082-181009](#) [636-1427](#) [638009-1](#) [641938-9](#) [641991-4](#) [644168-1](#) [647662-1](#) [65039-019ELF](#) [65781-018](#) [65781-047](#) [65817-002LF](#) [65817-015LF](#) [65863-015LF](#) [66207-023LF](#) [67016-026LF](#) [67046-001LF](#)