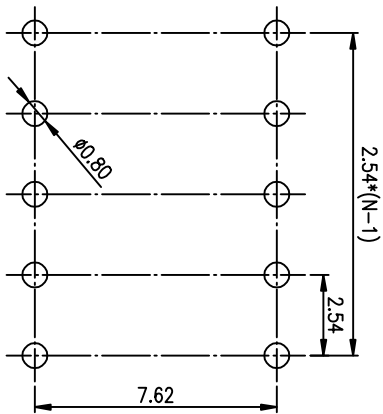
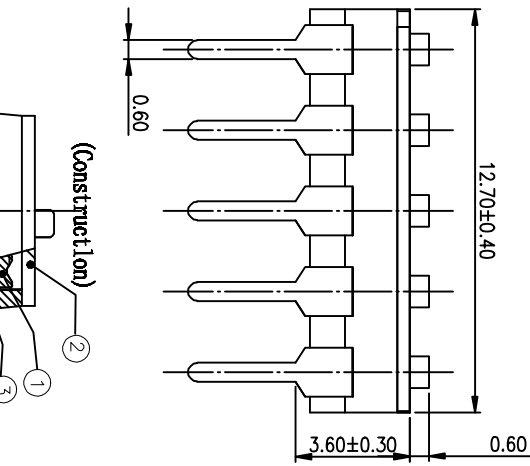
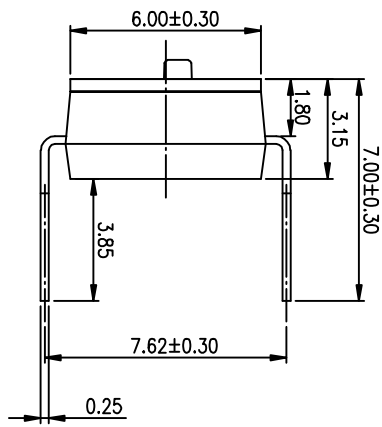
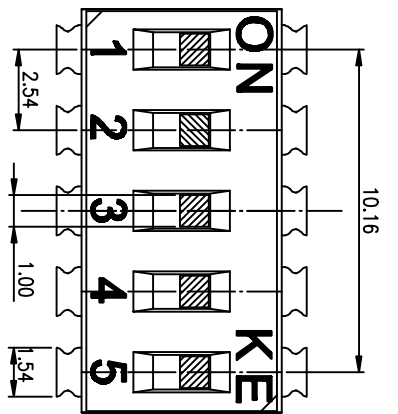
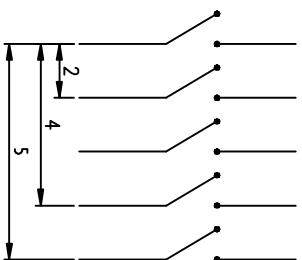


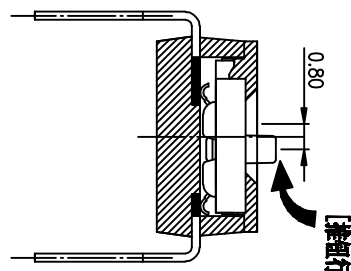
PRODUCT NO.	1210501HGET
ROHS COMPLIANT	Yes



RECOMMENDED P.C.B. LAYOUT (TOP VIEW)



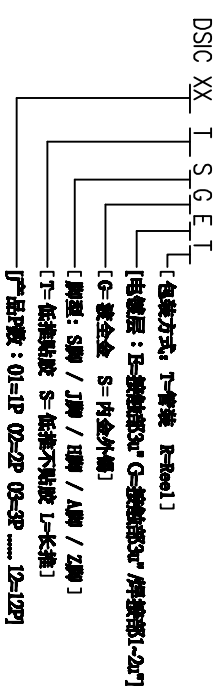
[Schematic]



[推板行程]

- NOTES :
- 1> Specification:
 - 1> Operating force: 1000gf Max
 - 2> Operating Temperature: -40° to +85°
 - 3> Storage Temperature: -40° to +85°
 - 4> Mechanical Life: 3000cycles minimum
 - 5> Electrical Life: 2000cycles 25mA 24VDC
 2. PLATING:
 - GOLD FLASH 1u"(min.) SOLDER TAIL,
 - 3u" GOLD PLATING ON THE CONTACT AREA,
 - WITH 50u" NICKEL UNDERPLATING OVERALL.

3. PART NUMBER DESCRIPTION



Number	Part Name	Material	Finished	TOLERANCE UNLESS OTHERWISE SPECIFIED	INSPECTION COPY	PROJECTION	TITLE
①	Actuator	UL94 V0	White	0 ± 0.25	0. ± 2'		BY DISC SERIES PITCH 2.54mm
②	Cover	UL94 V0	Black	.00 ± 0.15	.0 ± 1'		PRODUCT FAMILY DISC SERIES
③	Movable	Copper Alloy	3u"Gold	.000 ± 0.10	.00 ± 0.5'		PRAT NO. DISC05LHGET
④	Terminal	Brass	1u"Gold				FILE NO. DISC05LHGET-A
⑤	Base	UL94 V0	Black				SIZE UNIT SCALE SHEET REV.
⑥	Terminal Contact	Brass	3u"Gold				A4 mm 2 : 1 1 OF 1 A

东莞市一德实业有限公司
Dongguan Kingtek Industrial Co., Ltd.

DISC05LHGET

DISC05LHGET-A

2 : 1 1 OF 1 A

X-ON Electronics

Largest Supplier of Electrical and Electronic Components

Click to view similar products for [DIP Switches/SIP Switches](#) category:

Click to view products by [DGI manufacturer](#):

Other Similar products are found below :

[78M03S](#) [79B10T](#) [8136-475G4T](#) [G7G-1A2-CB-DC12](#) [A7SS-M](#) [DBP 2110](#) [DBP 2112](#) [DBS1008](#) [DHN02FTVTR](#) [DHN10T](#) [DHS108](#)
[DPL08TN](#) [DRD16CSE04](#) [DRR4010](#) [DRR60016](#) [DRS4016](#) [BD06E](#) [1825008-1](#) [1825444-1](#) [25.350.0653.0](#) [LA2-DC12](#) [SBS 5004 TG](#)
[SDA10H1BDA](#) [97R06ST](#) [A2C-2A5](#) [1825444-7](#) [ADE08SA04](#) [ADE12S04](#) [2161391-1](#) [2-1825058-8](#) [CCVA 2.5/ 4-G-5.08](#) [P26THRR32](#)
[25.330.0653.1](#) [25.352.0353.0](#) [MDG305ST](#) [IKN0600000](#) [IKN0800000](#) [LA2-002-DC24](#) [DBP2008](#) [DBS1003](#) [DBS2008](#) [438872000](#)
[DRD10CRAE04](#) [DRS1604](#) [DSR02T](#) [DSS 208 N](#) [5-1825033-1](#) [106-SDN06-EV](#) [1-1437507-6](#) [E2FMX2D1M1TGJ03M](#)
[E3ZMCT81M1TJ03M](#)